

Alexa Fluor® 488 anti-human CD58 Antibody

Catalog# / Size	330931 / 25 tests 330932 / 100 tests
Clone	TS2/9
Regulatory Status	RUO
Other Names	Lymphocyte function-associated antigen 3, LFA-3
Isotype	Mouse IgG1, κ
Description	CD58, also known as lymphocyte function-associated antigen 3 (LFA-3) is a 45-70 kD cell surface protein that is a member of the immunoglobulin superfamily. Alternative splicing of CD58 gives rise to transmembrane and glycosylphosphatidylinositol (GPI)-anchored forms on cell surface. CD58 is expressed on both hematopoietic and non-hematopoietic cells including B cells, T cells, monocytes, erythrocytes, endothelial cells, epithelial cells, and fibroblasts. High levels are observed on memory T cells and dendritic cells. CD58 expressed on antigen presenting cells and target cells enhances T cell recognition via the binding of its cognate ligand, CD2, on the T cell surface.

Product Details

Verified Reactivity	Human
Reported Reactivity	African Green, Baboon, Cynomolgus, Rhesus
Antibody Type	Monoclonal
Host Species	Mouse
Immunogen	Human cytolytic T cells
Formulation	Phosphate-buffered solution, pH 7.2, containing 0.09% sodium azide and BSA (origin USA)
Preparation	The antibody was purified by affinity chromatography and conjugated with Alexa Fluor® 488 under optimal conditions.
Concentration	Lot-specific (to obtain lot-specific concentration and expiration, please enter the lot number in our Certificate of Analysis online tool.)
Storage & Handling	The antibody solution should be stored undiluted between 2°C and 8°C, and protected from prolonged exposure to light. Do not freeze.
Application	FC - Quality tested
Recommended Usage	Each lot of this antibody is quality control tested by immunofluorescent staining with flow cytometric analysis . For flow cytometric staining, the suggested use of this reagent is 5 µL per million cells in 100 µL staining volume or 5 µL per 100 µL of whole blood. It is recommended that the reagent be titrated for optimal performance for each application. * Alexa Fluor® 488 has a maximum emission of 519 nm when it is excited at 488 nm. Alexa Fluor® and Pacific Blue™ are trademarks of Life Technologies Corporation. View full statement regarding label licenses
Excitation Laser	Blue Laser (488 nm)
Application Notes	Additional reported applications include: immunoprecipitation ¹ , inhibition of cytolytic activity ¹ , augment of IL-1 release by TE cells ²

Application References

1. Sanchez-Madrid F, *et al.* 1982. *Proc. Natl Acad. Sci. USA.* 79:7489
2. Le PT, *et al.* 1990. *J. Immunol.* 144:4541

(PubMed link indicates BioLegend citation)

RRID

AB_3683345 (BioLegend Cat. No. 330931)
AB_3683345 (BioLegend Cat. No. 330932)

Antigen Details

Structure	Immunoglobulin superfamily member, 45-70 kD cell surface protein. Alternative splicing gives rise to transmembrane and glycosylphosphatidylinositol (GPI)-anchored form on cell surface.
Distribution	Expressed on both hematopoietic and non-hematopoietic cells including B cells, T cells, monocytes, erythrocytes, endothelial cells, epithelial cells, and fibroblasts. High levels are observed on memory T cells and dendritic cells.
Function	Mediates adhesion between various cell types (target cells and cytotoxic cells, APC and T cells, thymocytes and thymic epithelia).
Ligand/Receptor	CD2
Cell Type	B cells, Dendritic cells
Biology Area	Cell Adhesion, Cell Biology, Costimulatory Molecules, Immunology
Molecular Family	CD Molecules
Antigen References	<ol style="list-style-type: none">1. Springer TA, <i>et al.</i> 1987. <i>Annu. Rev. Immunol.</i> 5:223.2. Dustin ML, <i>et al.</i> 1987. <i>Nature</i> 329:846.3. Arulanandam AR, <i>et al.</i> 1994. <i>J. Exp. Med.</i> 180:1861.4. Sanders ME, <i>et al.</i> 1988. <i>J. Immunol.</i> 140:1401.
Gene ID	965

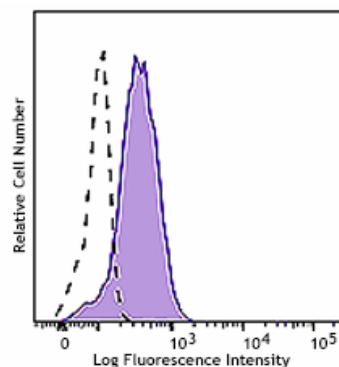
Related Protocols

- [Cell Surface Flow Cytometry Staining Protocol](#)

Other Formats

Purified anti-human CD58 (LFA-3), PE anti-human CD58 (LFA-3), PE/Cyanine5 anti-human CD58, PerCP/Cyanine5.5 anti-human CD58 (LFA-3), PE/Cyanine7 anti-human CD58 (LFA-3), APC anti-human CD58 (LFA-3), TotalSeq™-A0174 anti-human CD58 (LFA-3), TotalSeq™-C0174 anti-human CD58 (LFA-3), Ultra-LEAF™ Purified anti-human CD58 (LFA-3), TotalSeq™-B0174 anti-human CD58 (LFA-3), TotalSeq™-D0174 anti-human CD58 (LFA-3), PE anti-human CD58, Alexa Fluor® 488 anti-human CD58 Antibody, Brilliant Violet 421™ anti-human CD58 Antibody, Spark PLUS UV395™ anti-human CD58 Antibody

Product Data



Human peripheral blood lymphocytes were stained with anti-human CD58 (clone TS2/9) Alexa Fluor® 488 (filled histogram) or mouse IgG1, κ Alexa Fluor® 488 isotype control (open histogram).

For Research Use Only. Not for diagnostic or therapeutic use.

This product is supplied subject to the terms and conditions, including the limited license, located at www.biolegend.com/terms ("Terms") and may be used only as provided in the Terms. Without limiting the foregoing, BioLegend products may not be used for any Commercial Purpose as defined in the Terms, resold in any form, used in manufacturing, or reverse engineered, sequenced, or otherwise studied or used to learn its design or composition without express written approval of BioLegend. Regardless of the information given in this document, user is solely responsible for determining any license requirements necessary for user's intended use and assumes all risk and liability arising from use of the product. BioLegend is not responsible for patent infringement or any other risks or liabilities whatsoever resulting from the use of its products.

BioLegend, the BioLegend logo, and all other trademarks are property of BioLegend, Inc. or their respective owners, and all rights are reserved.

8999 BioLegend Way, San Diego, CA 92121 www.biolegend.com
Toll-Free Phone: 1-877-Bio-Legend (246-5343) Phone: (858) 768-5800 Fax: (877) 455-9587