

## Alexa Fluor® 488 anti-human HLA-G Recombinant Antibody

<b>Catalog# / Size</b>	381805 / 25 tests 381806 / 100 tests
<b>Clone</b>	QA19A11
<b>Regulatory Status</b>	RUO
<b>Isotype</b>	Mouse IgG1, $\kappa$
<b>Description</b>	HLA-G is a nonclassical MHC class I (MHC-Ib) molecule structurally related to MHC class Ia (HLA-A, B, C). There are seven isoforms of this molecule, including membrane bound HLA-G1, -G2, -G3 and -G4 and soluble HLA-G5, -G6, and -G7. HLA-G is primarily expressed on trophoblast cells. Its expression is also found on thymic epithelial cells, cytokine-activated monocytes, macrophages/dendritic cells during viral infection, and in various tumors. HLA-G exerts its inhibitory functions to regulate immune tolerance via interaction with inhibitory receptors ILT2 (CD85j), ILT4 (CD85d), and KIR2DL4 (CD158d), which is expressed on NK cells, T cells, monocytes, dendritic cells, and B cells. HLA-G is also able to bind CD8 $\alpha/\alpha$ , which may mediate positive and/or negative selection in the thymus.

### Product Details

---

<b>Verified Reactivity</b>	Human
<b>Antibody Type</b>	Recombinant
<b>Host Species</b>	Mouse
<b>Formulation</b>	Phosphate-buffered solution, pH 7.2, containing 0.09% sodium azide and BSA (origin USA)
<b>Preparation</b>	The antibody was purified by affinity chromatography and conjugated with Alexa Fluor® 488 under optimal conditions.
<b>Concentration</b>	Lot-specific (to obtain lot-specific concentration and expiration, please enter the lot number in our <a href="#">Certificate of Analysis</a> online tool.)
<b>Storage &amp; Handling</b>	The antibody solution should be stored undiluted between 2°C and 8°C, and protected from prolonged exposure to light. <b>Do not freeze.</b>
<b>Application</b>	<a href="#">FC - Quality tested</a>
<b>Recommended Usage</b>	Each lot of this antibody is quality control tested by <a href="#">immunofluorescent staining with flow cytometric analysis</a> . For flow cytometric staining, the suggested use of this reagent is 5 $\mu$ L per million cells in 100 $\mu$ L staining volume or 5 $\mu$ L per 100 $\mu$ L of whole blood. It is recommended that the reagent be titrated for optimal performance for each application.  * Alexa Fluor® 488 has a maximum emission of 519 nm when it is excited at 488 nm.  Alexa Fluor® and Pacific Blue™ are trademarks of Life Technologies Corporation.  <a href="#">View full statement regarding label licenses</a>
<b>Excitation Laser</b>	Blue Laser (488 nm)
<b>Application Notes</b>	Clone QA19A11 partially blocks the binding of reported clone MEMG/9.
<b>RRID</b>	AB_3683423 (BioLegend Cat. No. 381805) AB_3683423 (BioLegend Cat. No. 381806)

### Antigen Details

---

<b>Structure</b>	Ig
------------------	----

<b>Distribution</b>	Trophoblast cells, thymic epithelial cells, cytokine-activated monocytes, macrophages/dendritic cells during viral infection, various tumors
<b>Function</b>	Inhibit NK and T cell-mediated cytolysis and T cell proliferation, induce apoptosis of activated CD8+ T cells, induce Th2 cytokine production
<b>Interaction</b>	Dendritic cells, Epithelial cells, Macrophages, Monocytes
<b>Ligand/Receptor</b>	ILT2 (CD85j), ILT4 (CD85d), KIR2DL4 (CD158d), CD8α/α
<b>Cell Type</b>	Dendritic cells, Epithelial cells, Macrophages, Monocytes
<b>Biology Area</b>	Immunology
<b>Molecular Family</b>	MHC Antigens
<b>Antigen References</b>	<ol style="list-style-type: none"> <li>1. Hunt JS, <i>et al.</i> 2005. <i>FASEB J.</i> 19:681.</li> <li>2. Carosella ED, <i>et al.</i> 2008. <i>Blood.</i> 111:4862.</li> </ol>
<b>Gene ID</b>	<a href="#">3135</a>

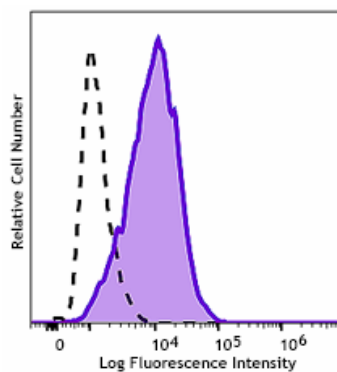
## Related Protocols

- [Cell Surface Flow Cytometry Staining Protocol](#)

## Other Formats

Purified anti-human HLA-G Recombinant Antibody, PE anti-human HLA-G Recombinant Antibody, Alexa Fluor® 488 anti-human HLA-G Recombinant Antibody, APC anti-human HLA-G Recombinant Antibody, Brilliant Violet 421™ anti-human HLA-G Recombinant Antibody, Brilliant Violet 785™ anti-human HLA-G Recombinant Antibody

## Product Data



Human cytotrophoblastic cell line (JEG-3) was stained with anti-human HLA-G recombinant (clone QA19A11) Alexa Fluor® 488 (filled histogram) or mouse IgG1, κ Alexa Fluor® 488 isotype control (open histogram).

For Research Use Only. Not for diagnostic or therapeutic use.

This product is supplied subject to the terms and conditions, including the limited license, located at [www.biolegend.com/terms](http://www.biolegend.com/terms) ("Terms") and may be used only as provided in the Terms. Without limiting the foregoing, BioLegend products may not be used for any Commercial Purpose as defined in the Terms, resold in any form, used in manufacturing, or reverse engineered, sequenced, or otherwise studied or used to learn its design or composition without express written approval of BioLegend. Regardless of the information given in this document, user is solely responsible for determining any license requirements necessary for user's intended use and assumes all risk and liability arising from use of the product. BioLegend is not responsible for patent infringement or any other risks or liabilities whatsoever resulting from the use of its products.

BioLegend, the BioLegend logo, and all other trademarks are property of BioLegend, Inc. or their respective owners, and all rights are reserved.

8999 BioLegend Way, San Diego, CA 92121 [www.biolegend.com](http://www.biolegend.com)  
Toll-Free Phone: 1-877-Bio-Legend (246-5343) Phone: (858) 768-5800 Fax: (877) 455-9587