

## Alexa Fluor® 594 Anti-Claudin 6 Antibody

<b>Catalog# / Size</b>	650053 / 25 µg 650054 / 100 µg
<b>Clone</b>	W22275B
<b>Regulatory Status</b>	RUO
<b>Other Names</b>	Claudin-6, Claudin 6, CLDN6, Skullin
<b>Isotype</b>	Rat IgG2a, λ
<b>Description</b>	Claudin-6 is a member of the claudin family of proteins, which consists of at least 24 members. Claudin proteins are integral membrane proteins characterized by 4 transmembrane regions and 2 extracellular loops that form tight junctions. Abnormal expression can disrupt tight junction integrity, playing an important role in the occurrence and development of cancers. Claudin-6 in particular, has been considered a therapeutic target because it is commonly expressed in tumor tissue but not in healthy adult tissue.

### Product Details

---

<b>Verified Reactivity</b>	Human
<b>Antibody Type</b>	Monoclonal
<b>Host Species</b>	Rat
<b>Immunogen</b>	Recombinant fragment of human Claudin-6
<b>Formulation</b>	Phosphate-buffered solution, pH 7.2, containing 0.09% sodium azide
<b>Preparation</b>	The antibody was purified by affinity chromatography and conjugated with Alexa Fluor® 594 under optimal conditions.
<b>Concentration</b>	0.5 mg/mL
<b>Storage &amp; Handling</b>	The antibody solution should be stored undiluted between 2°C and 8°C, and protected from prolonged exposure to light. <b>Do not freeze.</b>
<b>Application</b>	<a href="#">IHC-P - Quality tested</a>
<b>Recommended Usage</b>	<p>Each lot of this antibody is quality control tested by formalin-fixed paraffin-embedded immunohistochemical staining. For immunohistochemistry, a concentration range of 5.0 - 10.0 µg/mL is suggested. It is recommended that the reagent be titrated for optimal performance for each application.</p> <p>* Alexa Fluor® 594 has an excitation maximum of 590 nm, and a maximum emission of 617 nm.</p> <p>Alexa Fluor® and Pacific Blue™ are trademarks of Life Technologies Corporation.</p> <p><a href="#">View full statement regarding label licenses</a></p>
<b>Application Notes</b>	For use of this antibody in immunohistochemistry on formalin-fixed paraffin embedded tissues (IHC-P), we recommend antigen retrieval using Citrate Buffer, 10X (Cat. No. 420902), or Tris-EDTA pH 9.0 Antigen Retrieval Buffer (Cat. No. 422704)
<b>RRID</b>	AB_3683487 (BioLegend Cat. No. 650053) AB_3683487 (BioLegend Cat. No. 650054)

### Antigen Details

---

<b>Structure</b>	Consists of four transmembrane domains and two extracellular loops. It is a 220 amino acid length
------------------	---

protein with a predicted molecular weight of 23 kDa.

**Distribution** Cellular membrane  
**Function** Tight junctions and cell adhesion

**Antigen References**

1. Reinhard K, *et al.* 2020. *Science*. 367(6476):446-453.
2. Huan D, *et al.* 2021. *Mol Med Rep*. 24(3):677.
3. Ushiku T, *et al.* 2012. *Histopathology*. 61(6):1043-56.
4. Gowrikumar S, *et al.* 2019. *Int J Mol Sci*. 21:53.

**Gene ID** [9074](#)

## Related Protocols

---

- [Immunohistochemistry Protocol for Paraffin-Embedded Sections](#)

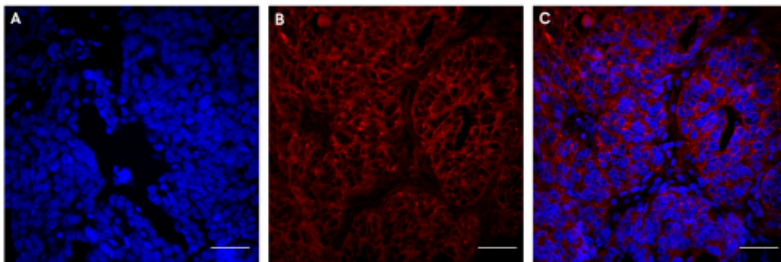
## Other Formats

---

Purified anti-Claudin-6 Antibody, Alexa Fluor® 594 Anti-Claudin 6

## Product Data

---



IHC staining with Alexa Fluor® 594 anti-Claudin 6 was performed on formalin-fixed paraffin-embedded human ovarian cancer tissue following antigen retrieval using Tris-EDTA pH 9.0 Antigen Retrieval Buffer (Cat. No. 422704). The tissue sections were incubated with Alexa Fluor® 594 Rat IgG2a,  $\kappa$  Isotype Control (Cat. No. 400555) (panel A) or with Alexa Fluor® 594 anti-Claudin 6 (clone W22275B) (panels B and C). Nuclei were counterstained with DAPI (Cat. No. 422801) (overlay in panels A and C). Scale Bar: 50  $\mu$ m

For Research Use Only. Not for diagnostic or therapeutic use.

This product is supplied subject to the terms and conditions, including the limited license, located at [www.biolegend.com/terms](http://www.biolegend.com/terms) ("Terms") and may be used only as provided in the Terms. Without limiting the foregoing, BioLegend products may not be used for any Commercial Purpose as defined in the Terms, resold in any form, used in manufacturing, or reverse engineered, sequenced, or otherwise studied or used to learn its design or composition without express written approval of BioLegend. Regardless of the information given in this document, user is solely responsible for determining any license requirements necessary for user's intended use and assumes all risk and liability arising from use of the product. BioLegend is not responsible for patent infringement or any other risks or liabilities whatsoever resulting from the use of its products.

BioLegend, the BioLegend logo, and all other trademarks are property of BioLegend, Inc. or their respective owners, and all rights are reserved.

8999 BioLegend Way, San Diego, CA 92121 [www.biolegend.com](http://www.biolegend.com)  
Toll-Free Phone: 1-877-Bio-Legend (246-5343) Phone: (858) 768-5800 Fax: (877) 455-9587