

Alexa Fluor® 594 anti-mouse CD326 (Ep-CAM) Antibody

Catalog# / Size	114203 / 25 µg 114204 / 100 µg
Clone	W21115A
Regulatory Status	RUO
Other Names	CD326, EGP40, MIC18, TROP1, KSA
Isotype	Rat IgG2a, κ
Description	EpCAM (CD326) mediates calcium-independent homophilic cell to cell adhesion. It may also function as a growth factor receptor. It is thought to be involved in maintaining cells in position during proliferation. Expression of EpCAM seems to correlate inversely with the level of E-cadherin (CD324). EpCAM is considered important in tumor biology.

Product Details

Verified Reactivity	Mouse
Antibody Type	Monoclonal
Host Species	Rat
Immunogen	Recombinant protein aa24-266
Formulation	Phosphate-buffered solution, pH 7.2, containing 0.09% sodium azide
Preparation	The antibody was purified by affinity chromatography and conjugated with Alexa Fluor® 594 under optimal conditions.
Concentration	0.5 mg/mL
Storage & Handling	The antibody solution should be stored undiluted between 2°C and 8°C, and protected from prolonged exposure to light. Do not freeze.
Application	IHC-F - Quality tested IHC-P - Verified
Recommended Usage	<p>Each lot of this antibody is quality control tested by immunohistochemical staining on frozen tissue sections. For immunohistochemistry, a concentration range of 2.5 - 10.0 µg/mL is suggested. For immunohistochemistry on formalin-fixed paraffin-embedded tissue sections, a concentration range of 1.0 - 5.0 µg/mL is suggested. It is recommended that the reagent be titrated for optimal performance for each application.</p> <p>* Alexa Fluor® 594 has an excitation maximum of 590 nm, and a maximum emission of 617 nm.</p> <p>Alexa Fluor® and Pacific Blue™ are trademarks of Life Technologies Corporation.</p> <p>View full statement regarding label licenses</p>
RRID	AB_3683142 (BioLegend Cat. No. 114203) AB_3683142 (BioLegend Cat. No. 114204)

Antigen Details

Structure	40 kD single-pass type 1 glycoprotein. 293 amino acids, with a 21 aa signal peptide, a 246 aa extracellular domain, a 21 aa transmembrane domain, and a 26 aa cytoplasmic domain. The extracellular domain contains two epidermal growth factor-like repeats.
Distribution	Expressed on majority of epithelial cell membranes with the exception of adult squamous cells of the skin and a few specific epithelial cell types
Function	Mediates calcium-independent homophilic cell-cell adhesion
Ligand/Receptor	CD305 (LAIR-1), CD306 (LAIR-2), and Ep-CAM

Cell Type Embryonic Stem Cells, Epithelial cells

Biology Area Immunology

Molecular Family Adhesion Molecules, CD Molecules

Antigen References

1. Borkowski TA, *et al.* 1996. *Eur J Immunol.* 26:110-4.
2. Bergsagel PL, *et al.* 1992. *J Immunol.* 148:590-6.

Gene ID [17075](#)

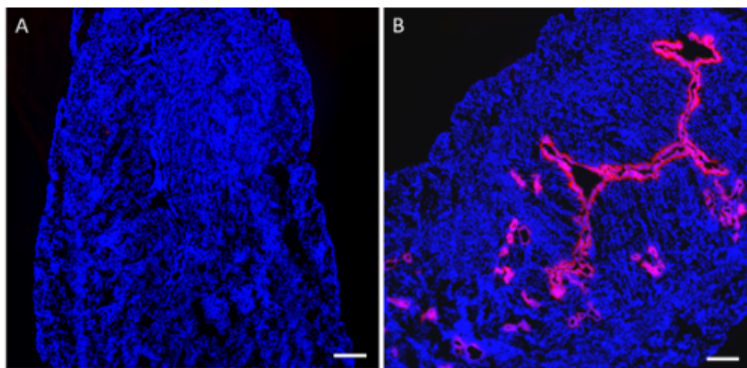
Related Protocols

- [Immunohistochemistry Protocol for Frozen Sections](#)
- [Immunohistochemistry Protocol for Paraffin-Embedded Sections](#)

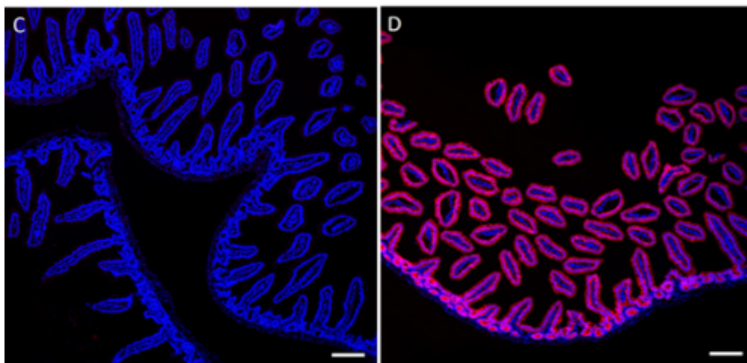
Other Formats

Purified anti-mouse CD326 (Ep-CAM), Alexa Fluor® 594 anti-mouse CD326 (Ep-CAM), Alexa Fluor® 647 anti-mouse CD326 (Ep-CAM), Alexa Fluor® 488 anti-mouse CD326 (Ep-CAM) Antibody

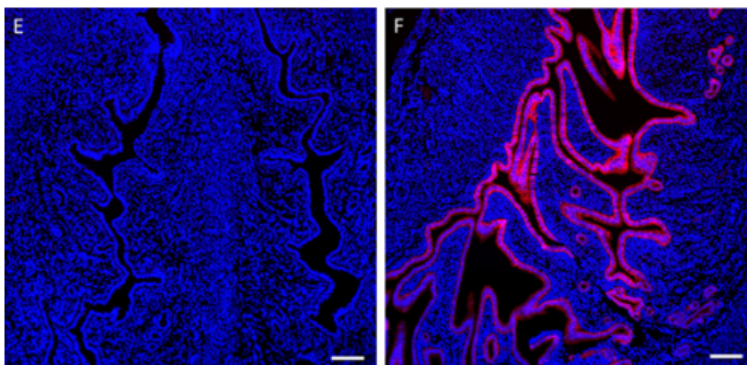
Product Data



IHC staining of anti-mouse CD326 (Ep-CAM) (clone W21115A) Alexa Fluor® 594 on C57BL/6 mouse frozen uterine tissue. After fixing with 4% paraformaldehyde (PFA) for 10 minutes at room temperature, the tissue was blocked with 5% FBS for 30 minutes at room temperature. Then, the tissue was stained with 5 $\mu\text{g}/\text{mL}$ of rat IgG2a, κ Alexa Fluor® 594 isotype control (panel A) or anti-mouse CD326 (Ep-CAM) Alexa Fluor® 594 (panel B) (red) at 4°C overnight. Nuclei were counterstained with DAPI (blue). The image was captured with a 10X objective. Scale bar: 50 μm



IHC staining of anti-mouse CD326 (Ep-CAM) (clone W21115A) Alexa Fluor® 594 on formalin-fixed paraffin-embedded C57BL/6 mouse small intestine tissue. After antigen retrieval using 1X Citrate Buffer (Cat. No. 420901), the tissue was stained with 2.5 $\mu\text{g}/\text{mL}$ of rat IgG2a, κ Alexa Fluor® 594 isotype control (panel C) or anti-mouse CD326 (Ep-CAM) Alexa Fluor® 594 (panel D) (red) at 4°C overnight. Nuclei were counterstained with DAPI (blue). The image was captured with a 10X objective. Scale bar: 50 μm



IHC staining of anti-mouse CD326 (Ep-CAM) (clone W21115A) Alexa Fluor® 594 on formalin-fixed paraffin-embedded C57BL/6 mouse uterine tissue. After antigen retrieval using 1X Citrate Buffer 1X (Cat. No. 420901), the tissue was stained with 5 $\mu\text{g}/\text{mL}$ of rat IgG2a, κ Alexa Fluor® 594 isotype control (panel E) or anti-mouse CD326 (Ep-CAM) Alexa Fluor® 594 (panel F) (red) at 4°C overnight. Nuclei were counterstained with DAPI (blue). The image was captured with a 10X objective. Scale bar: 50 μm

For Research Use Only. Not for diagnostic or therapeutic use.

This product is supplied subject to the terms and conditions, including the limited license, located at www.biolegend.com/terms ("Terms") and may be used only as provided in the Terms. Without limiting the foregoing, BioLegend products may not be used for any Commercial Purpose as defined in the Terms, resold in any form, used in manufacturing, or reverse engineered, sequenced, or otherwise studied or used to learn its design or composition without express written approval of BioLegend. Regardless of the information given in this document, user is solely responsible for determining any license requirements necessary for user's intended use and assumes all risk and liability arising from use of the product. BioLegend is not responsible for patent infringement or any other risks or liabilities whatsoever resulting from the use of its products.

BioLegend, the BioLegend logo, and all other trademarks are property of BioLegend, Inc. or their respective owners, and all rights are reserved.

8999 BioLegend Way, San Diego, CA 92121 www.biolegend.com
Toll-Free Phone: 1-877-Bio-Legend (246-5343) Phone: (858) 768-5800 Fax: (877) 455-9587