

Alexa Fluor® 647 anti-CD68 Antibody

Catalog# / Size	916105 / 25 µg 916106 / 100 µg
Clone	KP1
Regulatory Status	RUO
Other Names	Macrosialin, CD68 antigen, macrophage antigen CD68, scavenger receptor class D, member 1
Isotype	Mouse IgG1, κ
Description	Mouse CD68, also known as macrosialin, is an 85-115 kD member of the lysosomal-associated membrane protein (LAMP) family. It is a heavily glycosylated and predominantly intracellular protein, mainly in late endosomes. Macrosialin is the murine homolog to the human macrophage glycoprotein CD68. It is expressed on tissue macrophages, Langerhans cells and at low levels on dendritic cells. High levels of CD68 expression are detected in activated microglia. LAMP proteins may have functions related to cell-cell interaction or cell-ligand interaction. The biological function of CD68 is not completely understood.

Product Details

Verified Reactivity	Human
Antibody Type	Monoclonal
Host Species	Mouse
Immunogen	This antibody was generated using a Lysosomal fraction of human alveolar macrophages.
Formulation	Phosphate-buffered solution, pH 7.2, containing 0.09% sodium azide
Preparation	The antibody was purified by affinity chromatography and conjugated with Alexa Fluor® 647 under optimal conditions.
Concentration	0.5 mg/mL
Storage & Handling	The antibody solution should be stored undiluted between 2°C and 8°C, and protected from prolonged exposure to light. Do not freeze.
Application	IHC-P - Quality tested ICC - Verified
Recommended Usage	<p>Each lot of this antibody is quality control tested by formalin-fixed paraffin-embedded immunohistochemical staining. For immunohistochemistry on formalin-fixed paraffin-embedded tissue sections, a concentration range of 1.0 - 10.0 µg/mL is suggested. For immunocytochemistry, a concentration range of 1.25 - 10.0 µg/mL is recommended. It is recommended that the reagent be titrated for optimal performance for each application.</p> <p>* Alexa Fluor® 647 has a maximum emission of 668 nm when it is excited at 633 nm / 635 nm.</p> <p>Alexa Fluor® and Pacific Blue™ are trademarks of Life Technologies Corporation.</p> <p>View full statement regarding label licenses</p>
Excitation Laser	Red Laser (633 nm)
Application Notes	<p>For use in immunocytochemistry (ICC), it is recommended to fix/permeabilize with either of the following:</p> <ul style="list-style-type: none">- Fixation buffer (Cat. No. 420801) with 100% ice-cold methanol- 100% ice-cold methanol only <p>Fixation/permeabilization with Fixation buffer (Cat. No. 420801) followed by 0.5 % Triton X-100 is not recommended due to non-specific staining.</p>

Application References

(PubMed link indicates BioLegend citation)

1. Holness CL, *et al.* 1993. *Blood* 81(6):1607.
2. Horny HP, *et al.* 1990. *J. Clin. Path.* 43:719.
3. Pulford KAF, *et al.* 1989. *J. Clin. Path.* 42:414.

RRID

AB_3683504 (BioLegend Cat. No. 916105)
AB_3683504 (BioLegend Cat. No. 916106)

Antigen Details

Structure	CD68 is a 354 amino acid protein with a predicted molecular weight of 37.4 kD
Distribution	Microglia, monocytes, macrophages, dendritic cells, granulocytes, subset of hematopoietic progenitors, γ/δ T cells, NK cells, LAK cells, subset of B cells, fibroblasts, and endothelial cells.
Cell Type	B cells, Dendritic cells, Endothelial cells, Fibroblasts, Granulocytes, Hematopoietic stem and progenitors, Macrophages, Microglia, Monocytes
Biology Area	Cell Biology, Immunology, Neuroscience, Neuroscience Cell Markers, Signal Transduction
Molecular Family	CD Molecules
Antigen References	<ol style="list-style-type: none">1. Holness CL, <i>et al.</i> 1993. <i>Blood</i>. 81(6):1607.2. Horny HP, <i>et al.</i> 1990. <i>J Clin Path.</i> 43:719.3. Pulford KAF, <i>et al.</i> 1989. <i>J Clin Path.</i> 42:414.

Gene ID

[968](#)

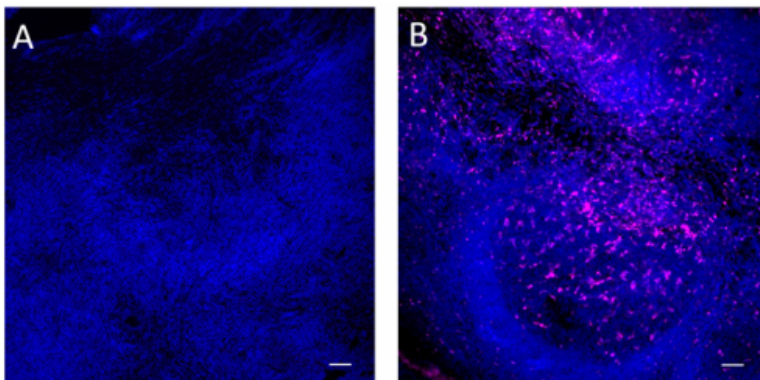
Related Protocols

- [Immunocytochemistry Staining Protocol](#)
- [Immunohistochemistry Protocol for Paraffin-Embedded Sections](#)

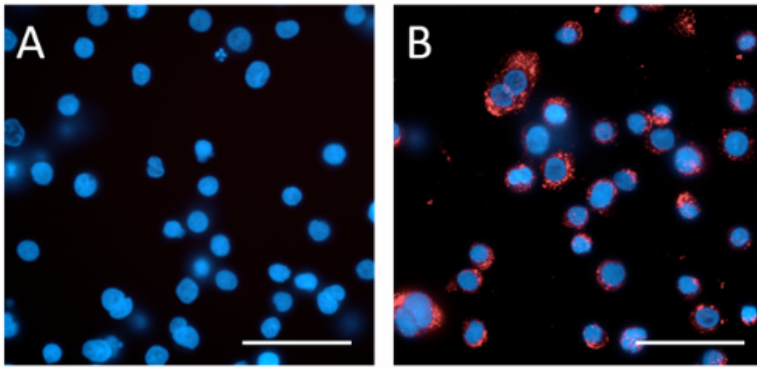
Other Formats

Purified anti-CD68, Alexa Fluor® 647 anti-CD68, Alexa Fluor® 488 anti-CD68

Product Data



IHC staining with Alexa Fluor® 647 anti-CD68 (clone KP1) on formalin-fixed paraffin-embedded human tonsil tissue. Following antigen retrieval using 1X Citrate Buffer (Cat. No. 420902), the tissue was incubated without (panel A) and with (panel B) Alexa Fluor® 647 anti-CD68 (clone KP1). Nuclei were counterstained with DAPI (Cat. No. 422801). Images were captured with a 40X objective and merged. Scale bar: 50 μ m



THP-1 cells were fixed and permeabilized with 100% ice-cold methanol for 10 minutes, and blocked with 5% FBS for 1 hour at room temperature. Cells were then incubated without (panel A) or with (panel B) Alexa Fluor® 647 anti-CD68 (clone KP1). Nuclei were counterstained with DAPI (Cat. No. 422801). The images were captured on a Revvity Operetta CLS™ High Content Analysis System with a 63X objective and merged. Scale bar: 50 μ m

For Research Use Only. Not for diagnostic or therapeutic use.

This product is supplied subject to the terms and conditions, including the limited license, located at www.biolegend.com/terms ("Terms") and may be used only as provided in the Terms. Without limiting the foregoing, BioLegend products may not be used for any Commercial Purpose as defined in the Terms, resold in any form, used in manufacturing, or reverse engineered, sequenced, or otherwise studied or used to learn its design or composition without express written approval of BioLegend. Regardless of the information given in this document, user is solely responsible for determining any license requirements necessary for user's intended use and assumes all risk and liability arising from use of the product. BioLegend is not responsible for patent infringement or any other risks or liabilities whatsoever resulting from the use of its products.

BioLegend, the BioLegend logo, and all other trademarks are property of BioLegend, Inc. or their respective owners, and all rights are reserved.

8999 BioLegend Way, San Diego, CA 92121 www.biolegend.com
Toll-Free Phone: 1-877-Bio-Legend (246-5343) Phone: (858) 768-5800 Fax: (877) 455-9587