

Alexa Fluor® 647 anti-human CD135 (Flt-3/Flk-2) Antibody

Catalog# / Size	313331 / 25 tests 313332 / 100 tests
Clone	BV10A4H2
Regulatory Status	RUO
Other Names	FMS-like tyrosine kinase-3, FLT-3, STK-1, Flk-2
Isotype	Mouse IgG1, κ
Description	CD135 is a 130-160 kD type III tyrosine kinase receptor expressed on CD34 ⁺ hematopoietic stem cells, myelomonocytic progenitors, primitive B cell progenitors, and thymocytes. CD135 is also expressed on malignant hematopoietic cells including AML, ALL and CML-BC. CD135, also known as FMS-like tyrosine kinase-3, FLT3, STK-1, and Flk-2, is a growth factor receptor that binds the FLT3 ligand to promote the growth and differentiation of primitive hematopoietic cells. The intracytoplasmic domain of CD135 is modified by phosphorylation and has been shown to interact with Grb2, SOCS1, VAV1, and Shc.

Product Details

Verified Reactivity	Human
Antibody Type	Monoclonal
Host Species	Mouse
Immunogen	BV-173 pro-B cell line
Formulation	Phosphate-buffered solution, pH 7.2, containing 0.09% sodium azide and BSA (origin USA)
Preparation	The antibody was purified by affinity chromatography and conjugated with Alexa Fluor® 647 under optimal conditions.
Concentration	Lot-specific (to obtain lot-specific concentration and expiration, please enter the lot number in our Certificate of Analysis online tool.)
Storage & Handling	The antibody solution should be stored undiluted between 2°C and 8°C, and protected from prolonged exposure to light. Do not freeze.
Application	FC - Quality tested
Recommended Usage	Each lot of this antibody is quality control tested by immunofluorescent staining with flow cytometric analysis . For flow cytometric staining, the suggested use of this reagent is 5 µL per million cells in 100 µL staining volume or 5 µL per 100 µL of whole blood. It is recommended that the reagent be titrated for optimal performance for each application. * Alexa Fluor® 647 has a maximum emission of 668 nm when it is excited at 633 nm / 635 nm. Alexa Fluor® and Pacific Blue™ are trademarks of Life Technologies Corporation. View full statement regarding label licenses
Excitation Laser	Red Laser (633 nm)
RRID	AB_3683326 (BioLegend Cat. No. 313331) AB_3683326 (BioLegend Cat. No. 313332)

Antigen Details

Structure	Member of the immunoglobulin supergene family, type 3 tyrosine kinase receptor; 130-160 kD
------------------	--

Distribution	Expressed on CD34 ⁺ hematopoietic stem cells, myelomonocytic progenitors, primitive B cell progenitors, and thymocytes. Also expressed on AML, ALL and CML-BC tumor cells
Function	Tyrosine kinase growth factor receptor involved in the growth and differentiation of primitive hematopoietic cells
Ligand/Receptor	FLT3 ligand
Cell Type	B cells, Hematopoietic stem and progenitors, Leukemia, Thymocytes
Biology Area	Cell Biology, Immunology
Molecular Family	CD Molecules, Cytokine/Chemokine Receptors
Antigen References	<ol style="list-style-type: none"> 1. Rappold I, <i>et al.</i> 1997. <i>Blood</i> 90:111. 2. Rosnet O, <i>et al.</i> 1996. <i>Acta Haematol.</i> 95:218. 3. Rosnet O, <i>et al.</i> 1996. <i>Leukemia</i> 10:238. 4. Bertho JM, <i>et al.</i> 2000. <i>Scand. J. Immunol.</i> 52:53.
Gene ID	2322

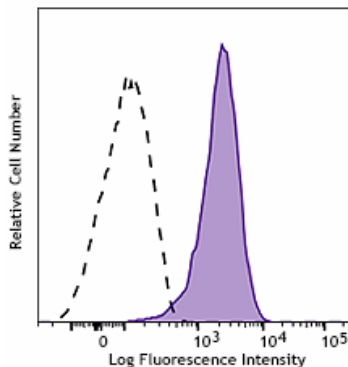
Related Protocols

- [Cell Surface Flow Cytometry Staining Protocol](#)

Other Formats

Purified anti-human CD135 (Flt-3/Flk-2), PE anti-human CD135 (Flt-3/Flk-2), APC anti-human CD135 (Flt-3/Flk-2), PE/Cyanine5 anti-human CD135 (Flt-3/Flk-2), Biotin anti-human CD135 (Flt-3/Flk-2), PE/Cyanine7 anti-human CD135 (Flt-3/Flk-2), PerCP/Cyanine5.5 anti-human CD135 (Flt-3/Flk-2), TotalSeq™-A0351 anti-human CD135 (Flt-3/Flk-2), PE/Dazzle™ 594 anti-human CD135 (Flt-3/Flk-2), TotalSeq™-B0351 anti-human CD135 (Flt-3/Flk-2), TotalSeq™-C0351 anti-human CD135 (Flt-3/Flk-2), TotalSeq™-D0351 anti-human CD135 (Flt-3/Flk-2), Brilliant Violet 711™ anti-human CD135 (Flt-3/Flk-2), Brilliant Violet 650™ anti-human CD135 (Flt-3/Flk-2), Alexa Fluor® 647 anti-human CD135 (Flt-3/Flk-2)

Product Data



Human pre-B cell line REH was stained with anti-human CD135 (Flt-3/Flk-2) (clone BV10A4H2) Alexa Fluor® 647 (filled histogram) or mouse IgG1, κ Alexa Fluor® 647 isotype control (open histogram).

For Research Use Only. Not for diagnostic or therapeutic use.

This product is supplied subject to the terms and conditions, including the limited license, located at www.biolegend.com/terms ("Terms") and may be used only as provided in the Terms. Without limiting the foregoing, BioLegend products may not be used for any Commercial Purpose as defined in the Terms, resold in any form, used in manufacturing, or reverse engineered, sequenced, or otherwise studied or used to learn its design or composition without express written approval of BioLegend. Regardless of the information given in this document, user is solely responsible for determining any license requirements necessary for user's intended use and assumes all risk and liability arising from use of the product. BioLegend is not responsible for patent infringement or any other risks or liabilities whatsoever resulting from the use of its products.

BioLegend, the BioLegend logo, and all other trademarks are property of BioLegend, Inc. or their respective owners, and all rights are reserved.

8999 BioLegend Way, San Diego, CA 92121 www.biolegend.com
Toll-Free Phone: 1-877-Bio-Legend (246-5343) Phone: (858) 768-5800 Fax: (877) 455-9587