

## PE/Cyanine7 anti-human CD62L Antibody

<b>Catalog# / Size</b>	385109 / 25 tests
<b>Clone</b>	S21001C
<b>Regulatory Status</b>	RUO
<b>Other Names</b>	L-selectin, LECAM-1, LAM-1, Leu-8, TQ-1
<b>Isotype</b>	Mouse IgG1, $\kappa$
<b>Description</b>	CD62L, also referred to as L-selectin or LECAM-1, is a 74-95 kD single chain type I glycoprotein. It is expressed on most peripheral blood B cells, subsets of T and NK cells, monocytes, granulocytes, and certain hematopoietic malignant cells. CD62L binds to carbohydrates present on certain glycoforms of CD34, glycam-1, and MAdCAM-1 and with a low affinity to anionic oligosaccharide sequences related to sialylated Lewis X (sLex, CD15s) through its C-type lectin domain. CD62L is important for the homing of naïve lymphocytes to high endothelial venules in peripheral lymph nodes and Peyer's patches. It also plays a role in leukocyte rolling on activated endothelial cells.

### Product Details

---

<b>Verified Reactivity</b>	Human
<b>Antibody Type</b>	Monoclonal
<b>Host Species</b>	Mouse
<b>Immunogen</b>	Human CD62L transfected cells
<b>Formulation</b>	Phosphate-buffered solution, pH 7.2, containing 0.09% sodium azide and BSA (origin USA)
<b>Preparation</b>	The antibody was purified by affinity chromatography and conjugated with PE/Cyanine7 under optimal conditions.
<b>Concentration</b>	Lot-specific (to obtain lot-specific concentration and expiration, please enter the lot number in our <a href="#">Certificate of Analysis</a> online tool.)
<b>Storage &amp; Handling</b>	The antibody solution should be stored undiluted between 2°C and 8°C, and protected from prolonged exposure to light. <b>Do not freeze.</b>
<b>Application</b>	<a href="#">FC - Quality tested</a>
<b>Recommended Usage</b>	Each lot of this antibody is quality control tested by <a href="#">immunofluorescent staining with flow cytometric analysis</a> . For flow cytometric staining, the suggested use of this reagent is 5 $\mu$ L per million cells in 100 $\mu$ L staining volume or 5 $\mu$ L per 100 $\mu$ L of whole blood. It is recommended that the reagent be titrated for optimal performance for each application.
<b>Excitation Laser</b>	Blue Laser (488 nm) Green Laser (532 nm)/Yellow-Green Laser (561 nm)
<b>Application Notes</b>	Clone S21001C does not block the binding of clone DREG-56 on target cells.  Clone S21001C may be more sensitive in detecting CD62L surface expression level changes.
<b>RRID</b>	AB_3683426 (BioLegend Cat. No. 385109)

### Antigen Details

---

<b>Structure</b>	Selectin, single chain glycoprotein, 74-95 kD
<b>Distribution</b>	Majority of B cells, naïve T cells, subset of memory T and NK cells, monocytes, granulocytes,

thymocytes

<b>Function</b>	Leukocyte homing, leukocyte tethering, rolling
<b>Ligand/Receptor</b>	CD34, GlyCAM, MAdCAM-1
<b>Cell Type</b>	B cells, Granulocytes, Lymphocytes, Monocytes, Neutrophils, NK cells, T cells
<b>Biology Area</b>	Cell Adhesion, Cell Biology, Immunology
<b>Molecular Family</b>	Adhesion Molecules, CD Molecules

<b>Antigen References</b>	1. Kishimoto T, <i>et al.</i> 1990. <i>P Natl Acad Sci USA.</i> 87:2244. 2. Kishimoto T, <i>et al.</i> 1991. <i>Blood.</i> 78:805-11.
---------------------------	--

**Gene ID** [6402](#)

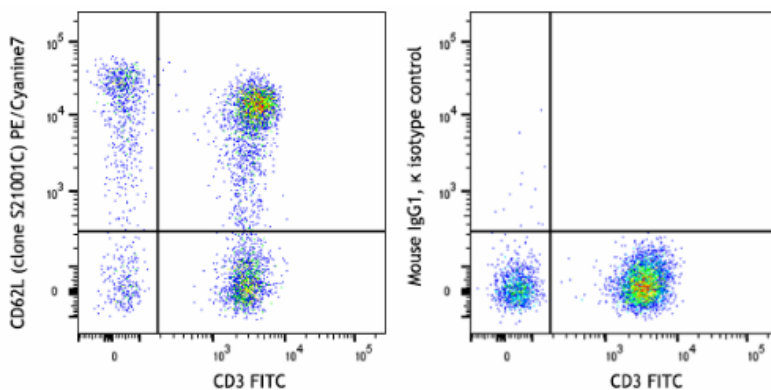
## Related Protocols

- [Cell Surface Flow Cytometry Staining Protocol](#)

## Other Formats

Purified anti-human CD62L, PE anti-human CD62L, APC anti-human CD62L, PerCP/Cyanine5.5 anti-human CD62L, PE/Cyanine7 anti-human CD62L, APC/Fire™ 750 anti-human CD62L, Spark YG™ 581 anti-human CD62L (Flexi-Fluor™), Spark YG™ 593 anti-human CD62L (Flexi-Fluor™) Antibody, Spark UV™ 387 anti-human CD62L (Flexi-Fluor™)

## Product Data



Human peripheral blood lymphocytes were stained with anti-human CD3 (clone UCHT1) FITC and anti-human CD62L (clone S21001C) PE/Cyanine7 (left) or mouse IgG1, κ PE/Cyanine7 isotype control (right).

For Research Use Only. Not for diagnostic or therapeutic use.

This product is supplied subject to the terms and conditions, including the limited license, located at [www.biolegend.com/terms](http://www.biolegend.com/terms) ("Terms") and may be used only as provided in the Terms. Without limiting the foregoing, BioLegend products may not be used for any Commercial Purpose as defined in the Terms, resold in any form, used in manufacturing, or reverse engineered, sequenced, or otherwise studied or used to learn its design or composition without express written approval of BioLegend. Regardless of the information given in this document, user is solely responsible for determining any license requirements necessary for user's intended use and assumes all risk and liability arising from use of the product. BioLegend is not responsible for patent infringement or any other risks or liabilities whatsoever resulting from the use of its products.

BioLegend, the BioLegend logo, and all other trademarks are property of BioLegend, Inc. or their respective owners, and all rights are reserved.

8999 BioLegend Way, San Diego, CA 92121 [www.biolegend.com](http://www.biolegend.com)  
Toll-Free Phone: 1-877-Bio-Legend (246-5343) Phone: (858) 768-5800 Fax: (877) 455-9587