

Alexa Fluor® 700 anti-His-Tag Antibody

Catalog# / Size	362637 / 25 µg 362638 / 100 µg
Clone	J095G46
Regulatory Status	RUO
Other Names	Hexa histidine-tag, 6xHis-tag, 6XHis, 6His
Isotype	Mouse IgG2a, κ
Description	This antibody was raised against a linear 8XHis tag. It reacts with His-tagged protein with C, N or internal 6XHis tags or longer. It can be used for western blotting to detect linear His repeats (6XHis or more). It can also be used for ICFC and ICC staining of His-tagged proteins.

Product Details

Verified Reactivity	Human, Mouse, Rat, All species
Antibody Type	Monoclonal
Host Species	Mouse
Immunogen	KLH-conjugated His-tag peptide.
Formulation	Phosphate-buffered solution, pH 7.2, containing 0.09% sodium azide
Preparation	The antibody was purified by affinity chromatography and conjugated with Alexa Fluor® 700 under optimal conditions.
Concentration	0.5 mg/mL
Storage & Handling	The antibody solution should be stored undiluted between 2°C and 8°C, and protected from prolonged exposure to light. Do not freeze.
Application	FC - Quality tested
Recommended Usage	<p>Each lot of this antibody is quality control tested by immunofluorescent staining with flow cytometric analysis. For flow cytometric staining, the suggested use of this reagent is ≤ 0.5 µg per million cells in 100 µL volume. It is recommended that the reagent be titrated for optimal performance for each application.</p> <p>* Alexa Fluor® 700 has a maximum emission of 719 nm when it is excited at 633 nm / 635 nm. Prior to using Alexa Fluor® 700 conjugate for flow cytometric analysis, please verify your flow cytometer's capability of exciting and detecting the fluorochrome.</p> <p>Alexa Fluor® and Pacific Blue™ are trademarks of Life Technologies Corporation.</p> <p>View full statement regarding label licenses</p>
Excitation Laser	Red Laser (633 nm)
Application Notes	<p>This antibody was raised against a linear 8X His tag. It reacts with proteins displaying repeats of 6 Histidines (His6) or more in either internal or C and N terminal regions. It is suitable for ICFC.</p> <p>Clone J095G46 has been verified for immunocytochemistry (ICC).</p>
RRID	AB_3683385 (BioLegend Cat. No. 362637) AB_3683385 (BioLegend Cat. No. 362638)

Antigen Details

Structure 6 repeat His amino acid
Function Epitope tag
Biology Area Cell Biology, Immunology

Antigen References

1. Zhao C, *et al.* 2010. *Anal Biochem.* 399:237
2. Salichs E, *et al.* 2009. *PLoS Genet.* 5:e1000397
3. Terpe K. 2003. *Appl. Microbiol. Biotechnol.* 60:523
4. Lindner, P, *et al.* 1997. *Biotechniques.* 22:140
5. Burritt JB, *et al.* 1995. *J. Biol. Chem.* 270:16974.
6. Taylor RM, *et al.* 2007. *Methods Mol. Biol.* 412:429.

Gene ID NA

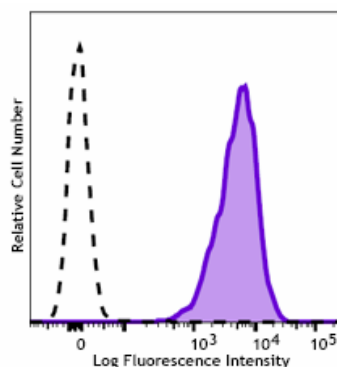
Related Protocols

- [Cell Surface Flow Cytometry Staining Protocol](#)

Other Formats

PE anti-His Tag, APC anti-His Tag, Alexa Fluor® 594 anti-His Tag, Purified anti-His Tag, Alexa Fluor® 647 anti-His Tag, Direct-Blot™ HRP anti-His Tag, Alexa Fluor® 488 anti-His Tag, Ultra-LEAF™ Purified anti-His Tag, TotalSeq™-A1132 anti-His-Tag, TotalSeq™-B1132 anti-His-Tag, TotalSeq™-C1132 anti-His-Tag, PerCP/Cyanine5.5 anti-His-Tag, PE/Cyanine7 anti-His-Tag, FITC anti-His-Tag, Pacific Blue™ anti-His Tag, PE/Dazzle™ 594 anti-His-Tag, APC/Cyanine7 anti-His-Tag, PE/Cyanine5 anti-His-Tag, Alexa Fluor® 700 anti-His-Tag Antibody

Product Data



Human TMEM8a (with His-Tag) transfected P3.U1 cells were stained with anti-His- Tag (clone J095G46) Alexa Fluor® 700 (filled histogram) or mouse IgG2a, κ Alexa Fluor® 700 isotype control (open histogram).

For Research Use Only. Not for diagnostic or therapeutic use.

This product is supplied subject to the terms and conditions, including the limited license, located at www.biolegend.com/terms ("Terms") and may be used only as provided in the Terms. Without limiting the foregoing, BioLegend products may not be used for any Commercial Purpose as defined in the Terms, resold in any form, used in manufacturing, or reverse engineered, sequenced, or otherwise studied or used to learn its design or composition without express written approval of BioLegend. Regardless of the information given in this document, user is solely responsible for determining any license requirements necessary for user's intended use and assumes all risk and liability arising from use of the product. BioLegend is not responsible for patent infringement or any other risks or liabilities whatsoever resulting from the use of its products.

BioLegend, the BioLegend logo, and all other trademarks are property of BioLegend, Inc. or their respective owners, and all rights are reserved.

8999 BioLegend Way, San Diego, CA 92121 www.biolegend.com
Toll-Free Phone: 1-877-Bio-Legend (246-5343) Phone: (858) 768-5800 Fax: (877) 455-9587