

APC anti-human CD108 Antibody

Catalog# / Size	376607 / 25 tests 376608 / 100 tests
Clone	KS-2
Regulatory Status	RUO
Other Names	CD108, Semaphorin 7A
Isotype	Mouse IgG2a, κ
Description	CD108 is an 80 kD GPI-linked membrane-bound semaphorin, also known as the John-Milton-Hagen (JMH) blood group antigen, semaphorin 7A, H-SEMA, and SEMAL. It contains an Ig-like domain and is expressed at low levels on erythrocytes and lymphocytes. The expression of CD108 on lymphocytes is upregulated upon activation, and it plays an important role in modulating inflammation and T-cell-mediated immune responses. CD108 is a guidance protein that is involved in central and peripheral axon growth. The interaction of CD108 with its receptor PlexinC1 induces activation of monocytes.

Product Details

Verified Reactivity	Human
Antibody Type	Monoclonal
Host Species	Mouse
Immunogen	PHA-activated PBMC
Formulation	Phosphate-buffered solution, pH 7.2, containing 0.09% sodium azide and BSA (origin USA)
Preparation	The antibody was purified by affinity chromatography and conjugated with APC under optimal conditions.
Concentration	Lot-specific (to obtain lot-specific concentration and expiration, please enter the lot number in our Certificate of Analysis online tool.)
Storage & Handling	The antibody solution should be stored undiluted between 2°C and 8°C, and protected from prolonged exposure to light. Do not freeze.
Application	FC - Quality tested
Recommended Usage	Each lot of this antibody is quality control tested by immunofluorescent staining with flow cytometric analysis . For flow cytometric staining, the suggested use of this reagent is 5 μ L per million cells in 100 μ L staining volume or 5 μ L per 100 μ L of whole blood. It is recommended that the reagent be titrated for optimal performance for each application.
Excitation Laser	Red Laser (633 nm)
Application References	1. Kishimoto T, <i>et al.</i> Eds. 1997. <i>Leucocyte Typing VI</i> . Garland Publishing Inc. New York. 2. Angelisova P, <i>et al.</i> 1999. <i>Immunobiology</i> 200:234-45.
(PubMed link indicates BioLegend citation)	
RRID	AB_3675093 (BioLegend Cat. No. 376607) AB_3675093 (BioLegend Cat. No. 376608)

Antigen Details

Structure	Membrane-bound semaphorin with GPI linkage and contains and IgG like domain, approximately 80kD
------------------	---

Distribution	Widely expressed in spleen, thymus, testis, ovary, heart, lung, kidney, brain, small intestine, red cells, monocytes, and T cells
Function	Modulates inflammation and T-cell-mediated immune responses. Guidance protein involved in central and peripheral axon growth. Interaction with PlexinC1 induces activation of monocytes.
Ligand/Receptor	PlexinC1
Cell Type	Erythrocytes, Monocytes, T cells
Biology Area	Immunology
Molecular Family	CD Molecules
Antigen References	<ol style="list-style-type: none"> 1. Mine, T, <i>et al.</i> 2000. <i>Tissue Antigens</i>. 55: 429–36. 2. Jeroen Pasterkamp, <i>et al.</i> 2003. <i>Nature</i>. 424:398-405. 3. Seltsam A, <i>et al.</i> 2007. <i>Transfusion</i>. 47:133-46. 4. Suzuki K, <i>et al.</i> 2007. <i>Nature</i>. 446:680-4.
Gene ID	8482

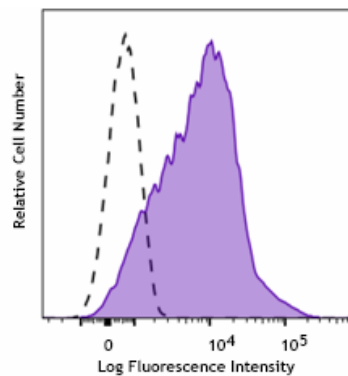
Related Protocols

- [Cell Surface Flow Cytometry Staining Protocol](#)

Other Formats

Purified anti-human CD108, PE anti-human CD108, FITC anti-human CD108, APC anti-human CD108

Product Data



CD3/CD28/IL-2 stimulated (3 days) human peripheral blood mononuclear cells were stained with anti-human CD108 (clone KS-2) APC (filled histogram) or mouse IgG2a, κ APC isotype control (open histogram).

For Research Use Only. Not for diagnostic or therapeutic use.

This product is supplied subject to the terms and conditions, including the limited license, located at www.biolegend.com/terms ("Terms") and may be used only as provided in the Terms. Without limiting the foregoing, BioLegend products may not be used for any Commercial Purpose as defined in the Terms, resold in any form, used in manufacturing, or reverse engineered, sequenced, or otherwise studied or used to learn its design or composition without express written approval of BioLegend. Regardless of the information given in this document, user is solely responsible for determining any license requirements necessary for user's intended use and assumes all risk and liability arising from use of the product. BioLegend is not responsible for patent infringement or any other risks or liabilities whatsoever resulting from the use of its products.

BioLegend, the BioLegend logo, and all other trademarks are property of BioLegend, Inc. or their respective owners, and all rights are reserved.

8999 BioLegend Way, San Diego, CA 92121 www.biolegend.com
Toll-Free Phone: 1-877-Bio-Legend (246-5343) Phone: (858) 768-5800 Fax: (877) 455-9587