

## APC anti-human CD56 (NCAM) Antibody

<b>Catalog# / Size</b>	343757 / 25 tests 343758 / 100 tests
<b>Clone</b>	W22097A
<b>Regulatory Status</b>	RUO
<b>Other Names</b>	Leu-19, NKH1, NCAM-1
<b>Isotype</b>	Rat IgG2a, $\kappa$
<b>Description</b>	CD56, also known as NCAM (neural cell adhesion molecule), Leu-19, or NKH1, is a single transmembrane glycoprotein. It is a member of the Ig superfamily. The 140 kD isoform is expressed on NK and NKT cells. CD56 is also expressed in the brain (cerebellum and cortex) and at neuromuscular junctions. Certain large granular lymphocyte (LGL) leukemias, small-cell lung carcinomas, neuronal derived tumors, myelomas, and myeloid leukemias also express CD56. CD56 plays a role in homophilic and heterophilic adhesion via binding to itself or heparan sulfate.

### Product Details

---

<b>Verified Reactivity</b>	Human
<b>Antibody Type</b>	Monoclonal
<b>Host Species</b>	Rat
<b>Immunogen</b>	Mammalian-derived recombinant protein aa 20-718
<b>Formulation</b>	Phosphate-buffered solution, pH 7.2, containing 0.09% sodium azide and BSA (origin USA)
<b>Preparation</b>	The antibody was purified by affinity chromatography and conjugated with APC under optimal conditions.
<b>Concentration</b>	Lot-specific (to obtain lot-specific concentration and expiration, please enter the lot number in our <a href="#">Certificate of Analysis</a> online tool.)
<b>Storage &amp; Handling</b>	The antibody solution should be stored undiluted between 2°C and 8°C, and protected from prolonged exposure to light. <b>Do not freeze.</b>
<b>Application</b>	<a href="#">FC - Quality tested</a>
<b>Recommended Usage</b>	Each lot of this antibody is quality control tested by <a href="#">immunofluorescent staining with flow cytometric analysis</a> . For flow cytometric staining, the suggested use of this reagent is 5 $\mu$ L per million cells in 100 $\mu$ L staining volume or 5 $\mu$ L per 100 $\mu$ L of whole blood. It is recommended that the reagent be titrated for optimal performance for each application.
<b>Excitation Laser</b>	Red Laser (633 nm)
<b>Application Notes</b>	Flow cytometry testing showed that clone W22097A can block the binding of clone HCD56 and W22098E on target cells.  Flow cytometry testing showed that clone W22097A does not affect the binding of clone MEM-188, 5.1H11 and W22098A on target cells.
<b>RRID</b>	AB_3683360 (BioLegend Cat. No. 343757) AB_3683360 (BioLegend Cat. No. 343758)

### Antigen Details

---

<b>Structure</b>	Ig superfamily, single transmembrane or GPI-anchored glycoprotein
------------------	---

<b>Distribution</b>	NK cells, T subset, neural tissue, some LGL and myeloid leukemias
<b>Function</b>	Adhesion
<b>Ligand/Receptor</b>	Heparan sulfate
<b>Cell Type</b>	Leukemia, Neurons, NK cells, NKT cells
<b>Biology Area</b>	Cell Adhesion, Cell Biology, Costimulatory Molecules, Immunology
<b>Molecular Family</b>	Adhesion Molecules, CD Molecules
<b>Antigen References</b>	<ol style="list-style-type: none"> <li>1. Lanier L, <i>et al.</i> 1991. <i>J Immunol.</i> 146:4421-6.</li> <li>2. Hemperly J, <i>et al.</i> 1990. <i>J Mol Neurosci.</i> 2:71-8.</li> <li>3. Cremer H, <i>et al.</i> 1994. <i>Nature.</i> 367:455-9.</li> </ol>
<b>Gene ID</b>	<a href="#">4684</a>

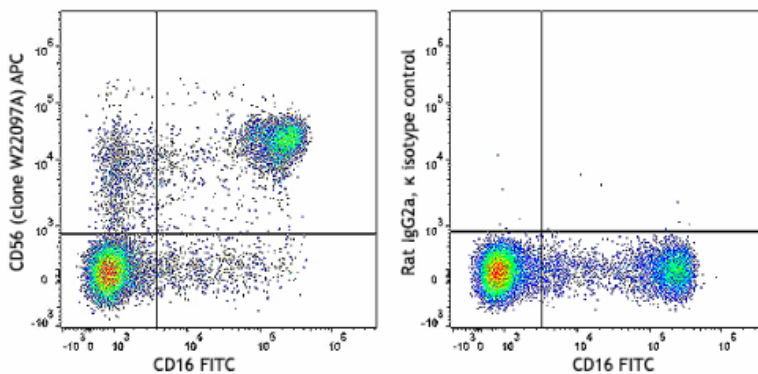
## Related Protocols

- [Cell Surface Flow Cytometry Staining Protocol](#)

## Other Formats

Purified anti-human CD56 (NCAM), PE anti-human CD56 (NCAM), PE/Cyanine7 anti-human CD56 (NCAM), APC anti-human CD56 (NCAM) Antibody, Brilliant Violet 421™ anti-human CD56 (NCAM), Brilliant Violet 605™ anti-human CD56 (NCAM)

## Product Data



Human peripheral blood lymphocytes were stained with anti-human CD16 (clone 3G8) FITC and anti-human CD56 (NCAM) (clone W22097A) APC (left) or rat IgG2a, κ APC isotype control (right).

For Research Use Only. Not for diagnostic or therapeutic use.

This product is supplied subject to the terms and conditions, including the limited license, located at [www.biolegend.com/terms](http://www.biolegend.com/terms) ("Terms") and may be used only as provided in the Terms. Without limiting the foregoing, BioLegend products may not be used for any Commercial Purpose as defined in the Terms, resold in any form, used in manufacturing, or reverse engineered, sequenced, or otherwise studied or used to learn its design or composition without express written approval of BioLegend. Regardless of the information given in this document, user is solely responsible for determining any license requirements necessary for user's intended use and assumes all risk and liability arising from use of the product. BioLegend is not responsible for patent infringement or any other risks or liabilities whatsoever resulting from the use of its products.

BioLegend, the BioLegend logo, and all other trademarks are property of BioLegend, Inc. or their respective owners, and all rights are reserved.

8999 BioLegend Way, San Diego, CA 92121 [www.biolegend.com](http://www.biolegend.com)  
Toll-Free Phone: 1-877-Bio-Legend (246-5343) Phone: (858) 768-5800 Fax: (877) 455-9587