

## APC/Cyanine7 anti-human CD159c (NKG2C) Antibody

<b>Catalog# / Size</b>	375019 / 25 tests 375020 / 100 tests
<b>Clone</b>	S19005E
<b>Regulatory Status</b>	RUO
<b>Other Names</b>	Killer Cell Lectin Like Receptor C2, KLRC2, NK Cell Receptor C
<b>Isotype</b>	Mouse IgG1, κ
<b>Description</b>	CD159c, also known as NKG2C or KLRC2, is a type II transmembrane protein. It belongs to the killer cell lectin-like receptor family also known as the NKG2 family. It is expressed on NK and NKT cells and T cell subsets. NKG2C is an activating NK cell receptor and it is expressed as a heterodimer with CD94. In humans, the NKG2C/CD94 complex interacts with HLA-E on target cells and delivers activating signals through immunoreceptor tyrosine-based activation motifs.

### Product Details

---

<b>Verified Reactivity</b>	Human
<b>Antibody Type</b>	Monoclonal
<b>Host Species</b>	Mouse
<b>Immunogen</b>	Human NKG2C/CD94-transfectants
<b>Formulation</b>	Phosphate-buffered solution, pH 7.2, containing 0.09% sodium azide and BSA (origin USA)
<b>Preparation</b>	The antibody was purified by affinity chromatography and conjugated with APC/Cyanine7 under optimal conditions.
<b>Concentration</b>	Lot-specific (to obtain lot-specific concentration and expiration, please enter the lot number in our <a href="#">Certificate of Analysis</a> online tool.)
<b>Storage &amp; Handling</b>	The antibody solution should be stored undiluted between 2°C and 8°C, and protected from prolonged exposure to light. <b>Do not freeze.</b>
<b>Application</b>	<a href="#">FC - Quality tested</a>
<b>Recommended Usage</b>	Each lot of this antibody is quality control tested by <a href="#">immunofluorescent staining with flow cytometric analysis</a> . For flow cytometric staining, the suggested use of this reagent is 5 µL per million cells in 100 µL staining volume or 5 µL per 100 µL of whole blood. It is recommended that the reagent be titrated for optimal performance for each application.
<b>Excitation Laser</b>	Red Laser (633 nm)
<b>Application Notes</b>	S19005E does not crossreact with mouse CD159c.
<b>RRID</b>	AB_3683403 (BioLegend Cat. No. 375019) AB_3683403 (BioLegend Cat. No. 375020)

### Antigen Details

---

<b>Structure</b>	Type II transmembrane proteins of the C-type lectin superfamily
<b>Distribution</b>	NK cells, NKT cells, T cell subsets
<b>Function</b>	Activating NK cell receptor

<b>Ligand/Receptor</b>	HLA-E
<b>Cell Type</b>	Lymphocytes, NK cells, NKT cells, T cells
<b>Biology Area</b>	Immuno-Oncology, Immunology
<b>Molecular Family</b>	Immune Checkpoint Receptors

**Antigen References**

1. Malisheni M, et al. 2017. Front Immunol. 8:863.
2. Sáez-Borderías A, et al. 2009. J Immunol, 182:829.
3. Kamiya T, et al. 2019. J. Clin. Invest. 129:2094.

**Gene ID** [3822](#)

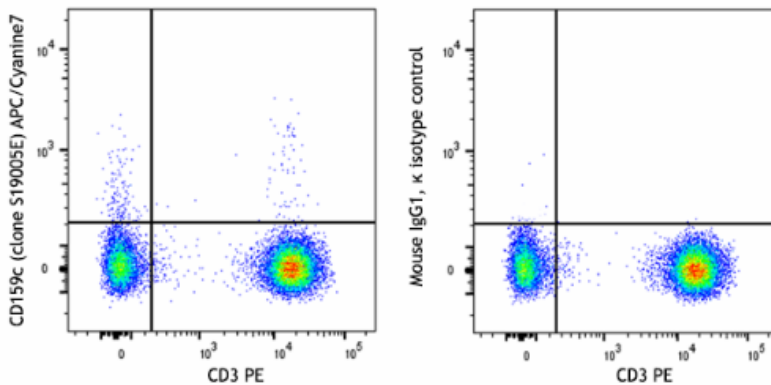
**Related Protocols**

- [Cell Surface Flow Cytometry Staining Protocol](#)

**Other Formats**

Purified anti-human CD159c (NKG2C), PE anti-human CD159c (NKG2C), TotalSeq™-C1375 anti-human CD159c (NKG2C), TotalSeq™-D1375 anti-human CD159c (NKG2C), TotalSeq™-B1375 anti-human CD159c (NKG2C), TotalSeq™-A1375 anti-human CD159c (NKG2C), Brilliant Violet 421™ anti-human CD159c (NKG2C), Brilliant Violet 785™ anti-human CD159c (NKG2C), PE anti-human CD159c, APC anti-human CD159c (NKG2C), APC/Cyanine7 anti-human CD159c (NKG2C), FITC anti-human CD159c (NKG2C), Brilliant Violet 605™ anti-human CD159c (NKG2C)

**Product Data**



Human peripheral blood lymphocytes were stained with anti-human CD3 (clone UCHT1) PE and anti-human CD159c (NKG2C) (clone S19005E) APC/Cyanine7 (left) or mouse IgG1, κ APC/Cyanine7 isotype control (right).

For Research Use Only. Not for diagnostic or therapeutic use.

This product is supplied subject to the terms and conditions, including the limited license, located at [www.biolegend.com/terms](http://www.biolegend.com/terms) ("Terms") and may be used only as provided in the Terms. Without limiting the foregoing, BioLegend products may not be used for any Commercial Purpose as defined in the Terms, resold in any form, used in manufacturing, or reverse engineered, sequenced, or otherwise studied or used to learn its design or composition without express written approval of BioLegend. Regardless of the information given in this document, user is solely responsible for determining any license requirements necessary for user's intended use and assumes all risk and liability arising from use of the product. BioLegend is not responsible for patent infringement or any other risks or liabilities whatsoever resulting from the use of its products.

BioLegend, the BioLegend logo, and all other trademarks are property of BioLegend, Inc. or their respective owners, and all rights are reserved.

8999 BioLegend Way, San Diego, CA 92121 [www.biolegend.com](http://www.biolegend.com)  
 Toll-Free Phone: 1-877-Bio-Legend (246-5343) Phone: (858) 768-5800 Fax: (877) 455-9587