

APC/Fire™ 750 anti-human CD62L Antibody

Catalog# / Size	385111 / 25 tests 385112 / 100 tests
Clone	S21001C
Regulatory Status	RUO
Other Names	L-selectin, LECAM-1, LAM-1, Leu-8, TQ-1
Isotype	Mouse IgG1, κ
Description	CD62L, also referred to as L-selectin or LECAM-1, is a 74-95 kD single chain type I glycoprotein. It is expressed on most peripheral blood B cells, subsets of T and NK cells, monocytes, granulocytes, and certain hematopoietic malignant cells. CD62L binds to carbohydrates present on certain glycoforms of CD34, glycam-1, and MAdCAM-1 and with a low affinity to anionic oligosaccharide sequences related to sialylated Lewis X (sLex, CD15s) through its C-type lectin domain. CD62L is important for the homing of naïve lymphocytes to high endothelial venules in peripheral lymph nodes and Peyer's patches. It also plays a role in leukocyte rolling on activated endothelial cells.

Product Details

Verified Reactivity	Human
Antibody Type	Monoclonal
Host Species	Mouse
Immunogen	Human CD62L transfected cells
Formulation	Phosphate-buffered solution, pH 7.2, containing 0.09% sodium azide and BSA (origin USA)
Preparation	The antibody was purified by affinity chromatography and conjugated with APC/Fire™ 750 under optimal conditions.
Concentration	Lot-specific (to obtain lot-specific concentration and expiration, please enter the lot number in our Certificate of Analysis online tool.)
Storage & Handling	The antibody solution should be stored undiluted between 2°C and 8°C, and protected from prolonged exposure to light. Do not freeze.
Application	FC - Quality tested
Recommended Usage	Each lot of this antibody is quality control tested by immunofluorescent staining with flow cytometric analysis . For flow cytometric staining, the suggested use of this reagent is 5 µL per million cells in 100 µL staining volume or 5 µL per 100 µL of whole blood. It is recommended that the reagent be titrated for optimal performance for each application. * APC/Fire™ 750 has a maximum excitation of 650 nm and a maximum emission of 774 nm.
Excitation Laser	Red Laser (633 nm)
Application Notes	Clone S21001C does not block the binding of clone DREG-56 on target cells. Clone S21001C may be more sensitive in detecting CD62L surface expression level changes.
RRID	AB_3683427 (BioLegend Cat. No. 385111) AB_3683427 (BioLegend Cat. No. 385112)

Antigen Details

Structure	Selectin, single chain glycoprotein, 74-95 kD
Distribution	Majority of B cells, naïve T cells, subset of memory T and NK cells, monocytes, granulocytes, thymocytes
Function	Leukocyte homing, leukocyte tethering, rolling
Ligand/Receptor	CD34, GlyCAM, MAdCAM-1
Cell Type	B cells, Granulocytes, Lymphocytes, Monocytes, Neutrophils, NK cells, T cells
Biology Area	Cell Adhesion, Cell Biology, Immunology
Molecular Family	Adhesion Molecules, CD Molecules
Antigen References	<ol style="list-style-type: none"> 1. Kishimoto T, <i>et al.</i> 1990. <i>P Natl Acad Sci USA.</i> 87:2244. 2. Kishimoto T, <i>et al.</i> 1991. <i>Blood.</i> 78:805-11.
Gene ID	6402

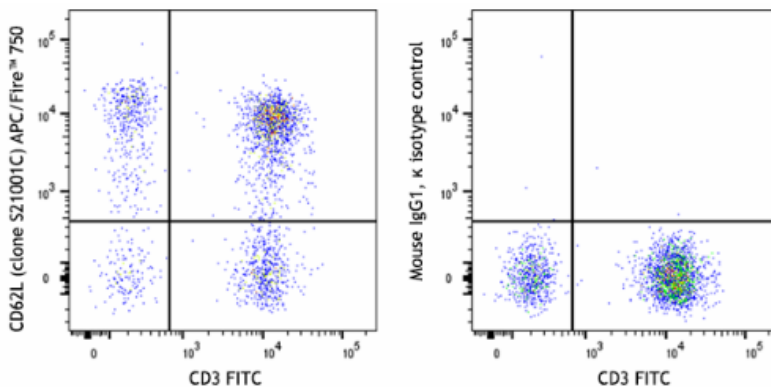
Related Protocols

- [Cell Surface Flow Cytometry Staining Protocol](#)

Other Formats

Purified anti-human CD62L, PE anti-human CD62L, APC anti-human CD62L, PerCP/Cyanine5.5 anti-human CD62L, PE/Cyanine7 anti-human CD62L, APC/Fire™ 750 anti-human CD62L, Spark YG™ 581 anti-human CD62L (Flexi-Fluor™), Spark YG™ 593 anti-human CD62L (Flexi-Fluor™) Antibody, Spark UV™ 387 anti-human CD62L (Flexi-Fluor™)

Product Data



Human peripheral blood lymphocytes were stained with anti-human CD3 (clone UCHT1) FITC and anti-human CD62L (clone S21001C) APC/Fire™ 750 (left) or mouse IgG1, κ APC/Fire™ 750 isotype control (right).

For Research Use Only. Not for diagnostic or therapeutic use.

This product is supplied subject to the terms and conditions, including the limited license, located at www.biolegend.com/terms ("Terms") and may be used only as provided in the Terms. Without limiting the foregoing, BioLegend products may not be used for any Commercial Purpose as defined in the Terms, resold in any form, used in manufacturing, or reverse engineered, sequenced, or otherwise studied or used to learn its design or composition without express written approval of BioLegend. Regardless of the information given in this document, user is solely responsible for determining any license requirements necessary for user's intended use and assumes all risk and liability arising from use of the product. BioLegend is not responsible for patent infringement or any other risks or liabilities whatsoever resulting from the use of its products.

BioLegend, the BioLegend logo, and all other trademarks are property of BioLegend, Inc. or their respective owners, and all rights are reserved.

8999 BioLegend Way, San Diego, CA 92121 www.biolegend.com
Toll-Free Phone: 1-877-Bio-Legend (246-5343) Phone: (858) 768-5800 Fax: (877) 455-9587