

Brilliant Violet 421™ anti-human CD158f (KIR2DL5) Antibody

Catalog# / Size	341313 / 25 tests 341314 / 100 tests
Clone	UP-R1
Regulatory Status	RUO
Other Names	KIR2DL5
Isotype	Mouse IgG1, κ
Description	CD158 molecules, also known as KIRs (killer cell immunoglobulin-like receptors), are a family of transmembrane proteins with either two (KIR2D) or three (KIR3D) Ig-like extracellular domains. Some KIRs with long cytoplasmic domains contain ITIMs and possess inhibitory functions and others with short cytoplasmic region lack ITIM and have activation functions. 14 polymorphic KIR genes have been reported in humans. CD158f is a 60 kD glycoprotein with 2 Ig-like extracellular domains and long cytoplasmic domains. Its expression is highly polymorphic between individuals and mainly expressed on a subset of NK cells and a small population of T cells. HLA class I alleles are the ligands of CD158f.

Product Details

Verified Reactivity	Human
Antibody Type	Monoclonal
Host Species	Mouse
Immunogen	Human KIR2DL5-Ig fusion protein
Formulation	Phosphate-buffered solution, pH 7.2, containing 0.09% sodium azide and BSA (origin USA)
Preparation	The antibody was purified by affinity chromatography and conjugated with Brilliant Violet 421™ under optimal conditions.
Concentration	Lot-specific (to obtain lot-specific concentration and expiration, please enter the lot number in our Certificate of Analysis online tool.)
Storage & Handling	The antibody solution should be stored undiluted between 2°C and 8°C, and protected from prolonged exposure to light. Do not freeze.
Application	FC - Quality tested
Recommended Usage	<p>Each lot of this antibody is quality control tested by immunofluorescent staining with flow cytometric analysis. For flow cytometric staining, the suggested use of this reagent is 5 µL per million cells in 100 µL staining volume or 5 µL per 100 µL of whole blood. It is recommended that the reagent be titrated for optimal performance for each application.</p> <p>Brilliant Violet 421™ excites at 405 nm and emits at 421 nm. The standard bandpass filter 450/50 nm is recommended for detection. Brilliant Violet 421™ is a trademark of Sirigen Group Ltd.</p> <p>Learn more about Brilliant Violet™.</p> <p>This product is subject to proprietary rights of Sirigen Inc. and is made and sold under license from Sirigen Inc. The purchase of this product conveys to the buyer a non-transferable right to use the purchased product for research purposes only. This product may not be resold or incorporated in any manner into another product for resale. Any use for therapeutics or diagnostics is strictly prohibited. This product is covered by U.S. Patent(s), pending patent applications and foreign equivalents.</p>
Excitation Laser	Violet Laser (405 nm)

Application References

1. Estefania E, et al. 2007. *J. Immunol.* 178:4402

(PubMed link indicates
BioLegend citation)

RRID AB_3683358 (BioLegend Cat. No. 341313)
AB_3683358 (BioLegend Cat. No. 341314)

Antigen Details

Structure	Contains two Ig-like extracellular domains, 60 kD
Distribution	Subset of NK cells and a small subset of T cells, polymorphic expression
Function	Inhibits NK cell function, play a role in self-tolerance.
Ligand/Receptor	HLA alleles
Cell Type	NK cells, T cells
Biology Area	Immunology
Molecular Family	CD Molecules
Antigen References	1. Zola H, et al. eds. 2007. <i>Leukocyte and Stromal Cell Molecules: The CD Markers</i> . Wiley-Liss A John Wiley & Sons Inc, Publication 2. Gonzalez A, et al. 2008. <i>Tissue Antigens</i> . 72:11
Gene ID	57292

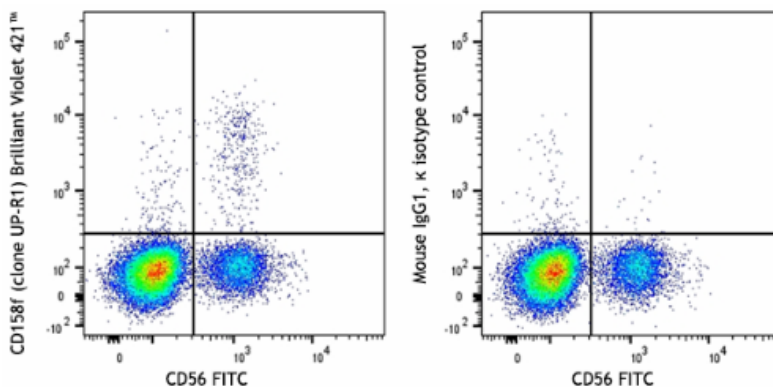
Related Protocols

- [Cell Surface Flow Cytometry Staining Protocol](#)

Other Formats

PE anti-human CD158f (KIR2DL5), TotalSeq™-A0600 anti-human CD158f (KIR2DL5), TotalSeq™-C0600 anti-human CD158f (KIR2DL5), Brilliant Violet 421™ anti-human CD158f (KIR2DL5)

Product Data



Human peripheral blood lymphocytes were stained with anti-human CD56 (NCAM) (clone HCD56) FITC and anti-human CD158f (KIR2DL5) (clone UP-R1) Brilliant Violet 421™ (left) or mouse IgG1, κ Brilliant Violet 421™ isotype control (right).

For Research Use Only. Not for diagnostic or therapeutic use.

This product is supplied subject to the terms and conditions, including the limited license, located at www.biolegend.com/terms ("Terms") and may be used only as provided in the Terms. Without limiting the foregoing, BioLegend products may not be used for any Commercial Purpose as defined in the Terms, resold in any form, used in manufacturing, or reverse engineered, sequenced, or otherwise studied or used to learn its design or composition without express written approval of BioLegend. Regardless of the information given in this document, user is solely responsible for determining any license requirements necessary for user's intended use and assumes all risk and liability arising from use of the product. BioLegend is not responsible for patent infringement or any other risks or liabilities whatsoever resulting from the use of its products.

BioLegend, the BioLegend logo, and all other trademarks are property of BioLegend, Inc. or their respective owners, and all rights are reserved.

8999 BioLegend Way, San Diego, CA 92121 www.biolegend.com
Toll-Free Phone: 1-877-Bio-Legend (246-5343) Phone: (858) 768-5800 Fax: (877) 455-9587