

Brilliant Violet 510™ anti-human CD3 Antibody

Catalog# / Size	300347 / 25 tests 300348 / 100 tests
Clone	HIT3a
Regulatory Status	RUO
Workshop	V CD03.05
Other Names	T3, CD3ε
Isotype	Mouse IgG2a, κ
Description	CD3ε is a 20 kD chain of the CD3/T-cell receptor (TCR) complex which is composed of two CD3ε, one CD3γ, one CD3δ, one CD3ζ (CD247), and a T-cell receptor (α/β or γ/δ) heterodimer. It is found on all mature T lymphocytes, NK-T cells, and some thymocytes. CD3, also known as T3, is a member of the immunoglobulin superfamily that plays a role in antigen recognition, signal transduction, and T cell activation.

Product Details

Verified Reactivity	Human
Antibody Type	Monoclonal
Host Species	Mouse
Formulation	Phosphate-buffered solution, pH 7.2, containing 0.09% sodium azide and BSA (origin USA)
Preparation	The antibody was purified by affinity chromatography and conjugated with Brilliant Violet 510™ under optimal conditions.
Concentration	Lot-specific (to obtain lot-specific concentration and expiration, please enter the lot number in our Certificate of Analysis online tool.)
Storage & Handling	The antibody solution should be stored undiluted between 2°C and 8°C, and protected from prolonged exposure to light. Do not freeze.
Application	FC - Quality tested
Recommended Usage	<p>Each lot of this antibody is quality control tested by immunofluorescent staining with flow cytometric analysis. For flow cytometric staining, the suggested use of this reagent is 5 µL per million cells in 100 µL staining volume or 5 µL per 100 µL of whole blood. It is recommended that the reagent be titrated for optimal performance for each application.</p> <p>Brilliant Violet 510™ excites at 405 nm and emits at 510 nm. The bandpass filter 510/50 nm is recommended for detection, although filter optimization may be required depending on other fluorophores used. Be sure to verify that your cytometer configuration and software setup are appropriate for detecting this channel. Refer to your instrument manual or manufacturer for support. Brilliant Violet 510™ is a trademark of Sirigen Group Ltd.</p> <p>Learn more about Brilliant Violet™.</p> <p>This product is subject to proprietary rights of Sirigen Inc. and is made and sold under license from Sirigen Inc. The purchase of this product conveys to the buyer a non-transferable right to use the purchased product for research purposes only. This product may not be resold or incorporated in any manner into another product for resale. Any use for therapeutics or diagnostics is strictly prohibited. This product is covered by U.S. Patent(s), pending patent applications and foreign equivalents.</p>
Excitation Laser	Violet Laser (405 nm)
Application Notes	Additional reported (for the relevant formats) applications include: immunohistochemical staining of acetone-fixed frozen sections, immunoprecipitation, and activation of T lymphocytes ⁴⁻⁷ . The HIT3a

antibody is able to stimulate T cell activation. The LEAF™ purified antibody (Endotoxin <0.1 EU/μg, Azide-Free, 0.2 μm filtered) is recommended for functional assays (Cat. No. 300314). For highly sensitive assays, we recommend Ultra-LEAF™ purified antibody (Cat. No. 300332) with a lower endotoxin limit than standard LEAF™ purified antibodies (Endotoxin <0.01 EU/μg).

Application References

(PubMed link indicates
BioLegend citation)

1. Schlossman S, *et al.* Eds. 1995. Leucocyte Typing V. Oxford University Press. New York.
2. Knapp W. 1989. Leucocyte Typing IV. Oxford University Press New York.
3. Barclay N, *et al.* 1997. The Leucocyte Antigen Facts Book. Academic Press Inc. San Diego.
4. Sedelies KA, *et al.* 2004. *J. Biol. Chem.* 279:26581. (Activ)
5. Rivollier A, *et al.* 2004. *Blood* 104:4029. (Activ)
6. Schar Schmidt E, *et al.* 2004. *Mol. Cell Biol.* 24:3860. (Activ)
7. Smeltz RB. 2007. *J. Immunol.* 178:4786. (Activ)

RRID

AB_3675023 (BioLegend Cat. No. 300347)
AB_3675023 (BioLegend Cat. No. 300348)

Antigen Details

Structure	Ig superfamily, with the subunits of CD3γ, CD3δ, CD3ζ (CD247) and TCR (α/β or γ/δ) forms CD3/TCR complex, 20 kD
Distribution	Mature T and NK-T cells, thymocyte differentiation
Function	Antigen recognition, signal transduction, T cell activation
Ligand/Receptor	Peptide antigen bound to MHC
Cell Type	NKT cells, T cells, Thymocytes, Tregs
Biology Area	Immunology
Molecular Family	CD Molecules, TCRs
Antigen References	<ol style="list-style-type: none">1. Barclay N, <i>et al.</i> 1993. The Leucocyte FactsBook. Academic Press. San Diego.2. Beverly P, <i>et al.</i> 1981. <i>Eur. J. Immunol.</i> 11:329.3. Lanier L, <i>et al.</i> 1986. <i>J. Immunol.</i> 137:2501-2507.
Gene ID	916

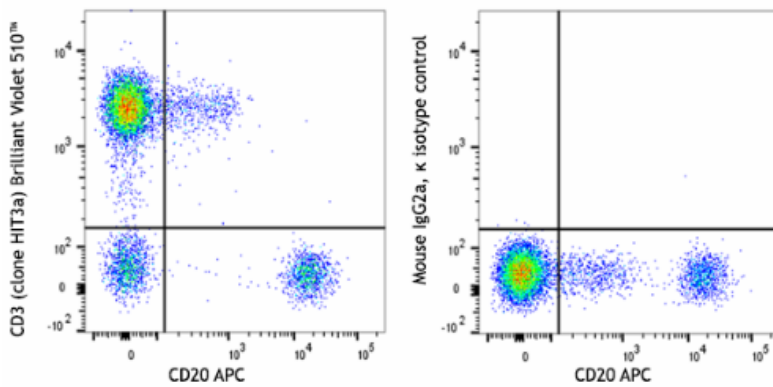
Related Protocols

- [Cell Surface Flow Cytometry Staining Protocol](#)

Other Formats

APC anti-human CD3, Biotin anti-human CD3, FITC anti-human CD3, PE anti-human CD3, PE/Cyanine5 anti-human CD3, Purified anti-human CD3, APC/Cyanine7 anti-human CD3, PE/Cyanine7 anti-human CD3, Alexa Fluor® 488 anti-human CD3, Alexa Fluor® 647 anti-human CD3, Alexa Fluor® 700 anti-human CD3, PerCP anti-human CD3, PerCP/Cyanine5.5 anti-human CD3, Pacific Blue™ anti-human CD3, Ultra-LEAF™ Purified anti-human CD3, PE/Dazzle™ 594 anti-human CD3, Spark UV™ 387 anti-human CD3, Spark Red™ 718 anti-human CD3, TotalSeq™-C1290 anti-human CD3, Brilliant Violet 605™ anti-human CD3, TotalSeq™-B1290 anti-human CD3, Brilliant Violet 510™ anti-human CD3, Spark YG™ 581 anti-human CD3 (Flexi-Fluor™)

Product Data



Human peripheral blood lymphocytes were stained with anti-human CD20 (clone 2H7) APC and anti-human CD3 (clone HIT3a) Brilliant Violet 510™ (left), or mouse IgG2a, κ Brilliant Violet 510™ isotype control (right).

For Research Use Only. Not for diagnostic or therapeutic use.

This product is supplied subject to the terms and conditions, including the limited license, located at www.biolegend.com/terms ("Terms") and may be used only as provided in the Terms. Without limiting the foregoing, BioLegend products may not be used for any Commercial Purpose as defined in the Terms, resold in any form, used in manufacturing, or reverse engineered, sequenced, or otherwise studied or used to learn its design or composition without express written approval of BioLegend. Regardless of the information given in this document, user is solely responsible for determining any license requirements necessary for user's intended use and assumes all risk and liability arising from use of the product. BioLegend is not responsible for patent infringement or any other risks or liabilities whatsoever resulting from the use of its products.

BioLegend, the BioLegend logo, and all other trademarks are property of BioLegend, Inc. or their respective owners, and all rights are reserved.

8999 BioLegend Way, San Diego, CA 92121 www.biolegend.com
 Toll-Free Phone: 1-877-Bio-Legend (246-5343) Phone: (858) 768-5800 Fax: (877) 455-9587