

Brilliant Violet 605™ anti-human CD159c (NKG2C) Antibody

Catalog# / Size	375023 / 25 tests 375024 / 100 tests
Clone	S19005E
Regulatory Status	RUO
Other Names	Killer Cell Lectin Like Receptor C2, KLRC2, NK Cell Receptor C
Isotype	Mouse IgG1, κ
Description	CD159c, also known as NKG2C or KLRC2, is a type II transmembrane protein. It belongs to the killer cell lectin-like receptor family also known as the NKG2 family. It is expressed on NK and NKT cells and T cell subsets. NKG2C is an activating NK cell receptor and it is expressed as a heterodimer with CD94. In humans, the NKG2C/CD94 complex interacts with HLA-E on target cells and delivers activating signals through immunoreceptor tyrosine-based activation motifs.

Product Details

Verified Reactivity	Human
Antibody Type	Monoclonal
Host Species	Mouse
Immunogen	Human NKG2C/CD94-transfectants
Formulation	Phosphate-buffered solution, pH 7.2, containing 0.09% sodium azide and BSA (origin USA)
Preparation	The antibody was purified by affinity chromatography and conjugated with Brilliant Violet 605™ under optimal conditions.
Concentration	Lot-specific (to obtain lot-specific concentration and expiration, please enter the lot number in our Certificate of Analysis online tool.)
Storage & Handling	The antibody solution should be stored undiluted between 2°C and 8°C, and protected from prolonged exposure to light. Do not freeze.
Application	FC - Quality tested
Recommended Usage	<p>Each lot of this antibody is quality control tested by immunofluorescent staining with flow cytometric analysis. For flow cytometric staining, the suggested use of this reagent is 5 µL per million cells in 100 µL staining volume or 5 µL per 100 µL of whole blood. It is recommended that the reagent be titrated for optimal performance for each application.</p> <p>Brilliant Violet 605™ excites at 405 nm and emits at 603 nm. The bandpass filter 610/20 nm is recommended for detection, although filter optimization may be required depending on other fluorophores used. Be sure to verify that your cytometer configuration and software setup are appropriate for detecting this channel. Refer to your instrument manual or manufacturer for support. Brilliant Violet 605™ is a trademark of Sirigen Group Ltd.</p> <p>Learn more about Brilliant Violet™.</p> <p>This product is subject to proprietary rights of Sirigen Inc. and is made and sold under license from Sirigen Inc. The purchase of this product conveys to the buyer a non-transferable right to use the purchased product for research purposes only. This product may not be resold or incorporated in any manner into another product for resale. Any use for therapeutics or diagnostics is strictly prohibited. This product is covered by U.S. Patent(s), pending patent applications and foreign equivalents.</p>
Excitation Laser	Violet Laser (405 nm)

Application Notes S19005E does not crossreact with mouse CD159c.

RRID AB_3683405 (BioLegend Cat. No. 375023)
AB_3683405 (BioLegend Cat. No. 375024)

Antigen Details

Structure Type II transmembrane proteins of the C-type lectin superfamily

Distribution NK cells, NKT cells, T cell subsets

Function Activating NK cell receptor

Ligand/Receptor HLA-E

Cell Type Lymphocytes, NK cells, NKT cells, T cells

Biology Area Immuno-Oncology, Immunology

Molecular Family Immune Checkpoint Receptors

Antigen References

1. Malisheni M, et al. 2017. Front Immunol. 8:863.
2. Sáez-Borderías A, et al. 2009. J Immunol, 182:829.
3. Kamiya T, et al. 2019. J. Clin. Invest. 129:2094.

Gene ID [3822](#)

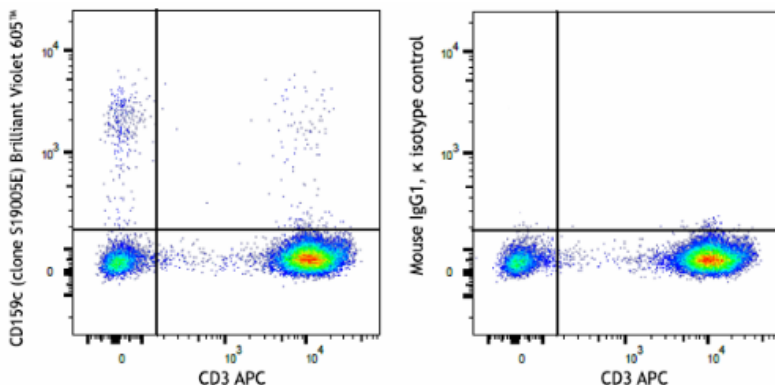
Related Protocols

- [Cell Surface Flow Cytometry Staining Protocol](#)

Other Formats

Purified anti-human CD159c (NKG2C), PE anti-human CD159c (NKG2C), TotalSeq™-C1375 anti-human CD159c (NKG2C), TotalSeq™-D1375 anti-human CD159c (NKG2C), TotalSeq™-B1375 anti-human CD159c (NKG2C), TotalSeq™-A1375 anti-human CD159c (NKG2C), Brilliant Violet 421™ anti-human CD159c (NKG2C), Brilliant Violet 785™ anti-human CD159c (NKG2C), PE anti-human CD159c, APC anti-human CD159c (NKG2C), APC/Cyanine7 anti-human CD159c (NKG2C), FITC anti-human CD159c (NKG2C), Brilliant Violet 605™ anti-human CD159c (NKG2C)

Product Data



Human peripheral blood lymphocytes were stained with anti-human CD3 (clone UCHT1) APC and anti-human CD159c (NKG2C) (clone S19005E) Brilliant Violet 605™ (left) or mouse IgG1, κ Brilliant Violet 605™ isotype control (right).

For Research Use Only. Not for diagnostic or therapeutic use.

This product is supplied subject to the terms and conditions, including the limited license, located at www.biolegend.com/terms ("Terms") and may be used only as provided in the Terms. Without limiting the foregoing, BioLegend products may not be used for any Commercial Purpose as defined in the Terms, resold in any form, used in manufacturing, or reverse engineered, sequenced, or otherwise studied or used to learn its design or composition without express written approval of BioLegend. Regardless of the information given in this document, user is solely responsible for determining any license requirements necessary for user's intended

use and assumes all risk and liability arising from use of the product. BioLegend is not responsible for patent infringement or any other risks or liabilities whatsoever resulting from the use of its products.

BioLegend, the BioLegend logo, and all other trademarks are property of BioLegend, Inc. or their respective owners, and all rights are reserved.

8999 BioLegend Way, San Diego, CA 92121 www.biolegend.com
Toll-Free Phone: 1-877-Bio-Legend (246-5343) Phone: (858) 768-5800 Fax: (877) 455-9587