

Brilliant Violet 650™ anti-human CD352 (NTB-A) Antibody

Catalog# / Size	332309 / 25 tests 332310 / 100 tests
Clone	W19035D
Regulatory Status	RUO
Other Names	SLAMF6, LY108, TCOM, SF2000, NTBA
Isotype	Rat IgG2a, κ
Description	NTBA (NK-, T-, and B-cell Antigen) is a 60 kD type I transmembrane glycoprotein. It is a member of Ig superfamily belonging to CD2/CD150 subfamily, also known as SLAMF6 (SLAM family member 6), LY108, TCOM, or SF2000. This antigen is expressed on NK cells, T cells (upregulated upon activation), and B cells. NTBA is its own ligand. The homophilic interaction of NTBA is involved in the induction of NK cytotoxicity, CD28 independent T cell costimulation, triggering Th1 cytokines production, and regulation of B cell tolerance. It may play a role in the regulation of autoimmune diseases.

Product Details

Verified Reactivity	Human
Antibody Type	Monoclonal
Host Species	Rat
Immunogen	Recombinant human CD352 protein
Formulation	Phosphate-buffered solution, pH 7.2, containing 0.09% sodium azide and BSA (origin USA)
Preparation	The antibody was purified by affinity chromatography and conjugated with Brilliant Violet 650™ under optimal conditions.
Concentration	Lot-specific (to obtain lot-specific concentration and expiration, please enter the lot number in our Certificate of Analysis online tool.)
Storage & Handling	The antibody solution should be stored undiluted between 2°C and 8°C, and protected from prolonged exposure to light. Do not freeze.
Application	FC - Quality tested
Recommended Usage	<p>Each lot of this antibody is quality control tested by immunofluorescent staining with flow cytometric analysis. For flow cytometric staining, the suggested use of this reagent is 5 μL per million cells in 100 μL staining volume or 5 μL per 100 μL of whole blood. It is recommended that the reagent be titrated for optimal performance for each application.</p> <p>Brilliant Violet 650™ excites at 405 nm and emits at 645 nm. The bandpass filter 660/20 nm is recommended for detection, although filter optimization may be required depending on other fluorophores used. Be sure to verify that your cytometer configuration and software setup are appropriate for detecting this channel. Refer to your instrument manual or manufacturer for support. Brilliant Violet 650™ is a trademark of Sirigen Group Ltd.</p> <p>Learn more about Brilliant Violet™.</p> <p>This product is subject to proprietary rights of Sirigen Inc. and is made and sold under license from Sirigen Inc. The purchase of this product conveys to the buyer a non-transferable right to use the purchased product for research purposes only. This product may not be resold or incorporated in any manner into another product for resale. Any use for therapeutics or diagnostics is strictly prohibited. This product is covered by U.S. Patent(s), pending patent applications and foreign equivalents.</p>
Excitation Laser	Violet Laser (405 nm)

Antigen Details

Structure	Type I transmembrane tyrosine-phosphorylated glycoprotein, CD2/CD150 subfamily, 60 kD
Distribution	NK cells, T cells, B cells
Function	CD28 independent T cell costimulation, induction of NK cell cytotoxicity, regulation of B cell tolerance
Ligand/Receptor	NTBA
Antigen References	1. Yigit B, <i>et al.</i> 2019. <i>Cancer Immunol. Res.</i> 10.1158/2326-6066 2. Wu N, <i>et al.</i> 2016. <i>Nature Immunol.</i> 17, 387-396 3. Radomir L, <i>et al.</i> 2017. <i>J. Immunol.</i> 199(8) 2745-2757
Gene ID	114836

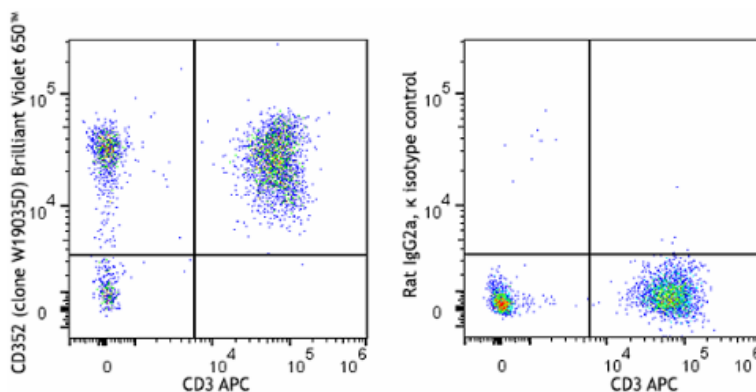
Related Protocols

- [Cell Surface Flow Cytometry Staining Protocol](#)

Other Formats

PE anti-human CD352 (NTB-A) Antibody, Purified anti-human CD352 (NTB-A) Antibody, PE/Cyanine7 anti-human CD352 (NTB-A), APC anti-human CD352 (NTB-A), Brilliant Violet 650™ anti-human CD352 (NTB-A) Antibody

Product Data



Human peripheral blood lymphocytes were stained with anti-human CD3 (clone UCHT1) APC and anti-human CD352 (NTB-A) (clone W19035D) Brilliant Violet 650™ (left) or rat IgG2a, κ Brilliant Violet 650™ isotype control (right).

For Research Use Only. Not for diagnostic or therapeutic use.

This product is supplied subject to the terms and conditions, including the limited license, located at www.biolegend.com/terms ("Terms") and may be used only as provided in the Terms. Without limiting the foregoing, BioLegend products may not be used for any Commercial Purpose as defined in the Terms, resold in any form, used in manufacturing, or reverse engineered, sequenced, or otherwise studied or used to learn its design or composition without express written approval of BioLegend. Regardless of the information given in this document, user is solely responsible for determining any license requirements necessary for user's intended use and assumes all risk and liability arising from use of the product. BioLegend is not responsible for patent infringement or any other risks or liabilities whatsoever resulting from the use of its products.

BioLegend, the BioLegend logo, and all other trademarks are property of BioLegend, Inc. or their respective owners, and all rights are reserved.

8999 BioLegend Way, San Diego, CA 92121 www.biolegend.com
Toll-Free Phone: 1-877-Bio-Legend (246-5343) Phone: (858) 768-5800 Fax: (877) 455-9587