

Brilliant Violet 711™ anti-human CD198 (CCR8) Antibody

| | |
|--------------------------|---|
| Catalog# / Size | 365819 / 25 tests 365820 / 100 tests |
| Clone | S19016H |
| Regulatory Status | RUO |
| Other Names | CC-CKR-8, C-C CKR-8, CCR-8, CC chemokine receptor 8, CDw198, CDw198 antigen, CD198, chemokine (C-C motif) receptor 8, chemokine (C-C) receptor 8, TER1, ChemR1, and CKR-L1 |
| Isotype | Rat IgG2b, κ |
| Description | CCR8, also known as ChemR1, TER1, and CKR-L1, belongs to the beta chemokine receptor family. It is predicted to be a seven transmembrane protein similar to G protein-coupled receptors. CCR8 is expressed on some subsets of T cells, monocytes, macrophages, eosinophils, thymocytes, Langerhans cells, neurons, and vascular smooth muscle cells. Binding with its ligand CCL1, CCR8 plays a role in the regulation of monocyte chemotaxis and thymic cell apoptosis. It has been reported that CCR8 is also a receptor for CCL18. CCR8 is also believed to be an alternative coreceptor to CD4 for HIV-1 infection. |

Product Details

| | |
|-------------------------------|---|
| Verified Reactivity | Human |
| Antibody Type | Monoclonal |
| Host Species | Rat |
| Immunogen | Human CCR8-transfected cells |
| Formulation | Phosphate-buffered solution, pH 7.2, containing 0.09% sodium azide and BSA (origin USA) |
| Preparation | The antibody was purified by affinity chromatography and conjugated with Brilliant Violet 711™ under optimal conditions. |
| Concentration | Lot-specific (to obtain lot-specific concentration and expiration, please enter the lot number in our Certificate of Analysis online tool.) |
| Storage & Handling | The antibody solution should be stored undiluted between 2°C and 8°C, and protected from prolonged exposure to light. Do not freeze. |
| Application | FC - Quality tested |
| Recommended Usage | Each lot of this antibody is quality control tested by immunofluorescent staining with flow cytometric analysis . For flow cytometric staining, the suggested use of this reagent is 5 μ L per million cells in 100 μ L staining volume or 5 μ L per 100 μ L of whole blood. It is recommended that the reagent be titrated for optimal performance for each application. |

Brilliant Violet 711™ excites at 405 nm and emits at 711 nm. The bandpass filter 710/50 nm is recommended for detection, although filter optimization may be required depending on other fluorophores used. Be sure to verify that your cytometer configuration and software setup are appropriate for detecting this channel. Refer to your instrument manual or manufacturer for support. Brilliant Violet 711™ is a trademark of Sirigen Group Ltd.

[Learn more about Brilliant Violet™.](#)

This product is subject to proprietary rights of Sirigen Inc. and is made and sold under license from Sirigen Inc. The purchase of this product conveys to the buyer a non-transferable right to use the purchased product for research purposes only. This product may not be resold or incorporated in any manner into another product for resale. Any use for therapeutics or diagnostics is strictly prohibited. This product is covered by U.S. Patent(s), pending patent applications and foreign equivalents.

| | |
|--------------------------|--|
| Excitation Laser | Violet Laser (405 nm) |
| Application Notes | Clone S19016H induces complement-dependent cytotoxicity (CDC) and antibody-dependent cellular phagocytosis (ADCP) on CCR8-transfected cells. |
| RRID | AB_3662270 (BioLegend Cat. No. 365819) AB_3662270 (BioLegend Cat. No. 365820) |

Antigen Details

| | |
|---------------------------|---|
| Structure | Seven hydrophobic transmembrane domains |
| Distribution | Vascular smooth muscle cells, macrophages, eosinophils, peritoneal macrophages, thymocytes, T cells, Langerhans cells and neurons |
| Cell Type | Tregs |
| Molecular Family | CD Molecules, Cytokine/Chemokine Receptors |
| Antigen References | <ol style="list-style-type: none"> 1. Tiffany HL, <i>et al.</i> 1997. <i>J Exp Med.</i> 186:165-70. 2. Goya I, <i>et al.</i> 1998. <i>J Immunol.</i> 160:1975-81. 3. Lee S, <i>et al.</i> 2000. <i>J Virol.</i> 74:6946-52. 4. Chensue SW, <i>et al.</i> 2001. <i>J Exp Med.</i> 193:573-84. 5. Qu C, <i>et al.</i> 2004. <i>J Exp Med.</i> 200:1231-41. 6. Isolam SA, <i>et al.</i> 2013. <i>J Exp Med.</i> 210:1889-98. |

Gene ID [1237](#)

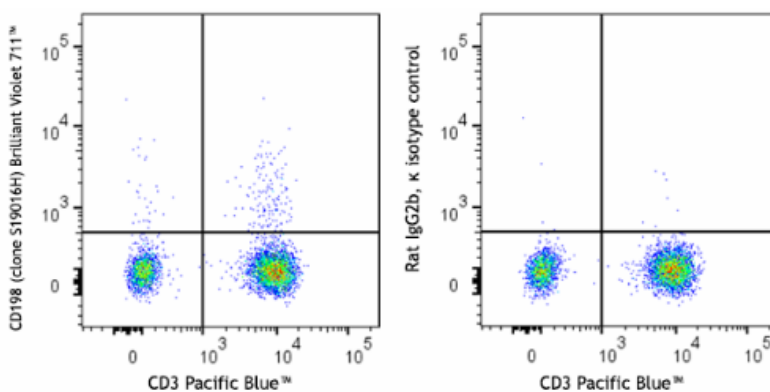
Related Protocols

- [Cell Surface Flow Cytometry Staining Protocol](#)

Other Formats

PE anti-human CD198 (CCR8), Purified anti-human CD198 (CCR8), Ultra-LEAF™ Purified anti-human CD198 (CCR8), APC anti-human CD198 (CCR8), Brilliant Violet 605™ anti-human CD198 (CCR8), PE/Cyanine5 anti-human CD198 (CCR8), Brilliant Violet 421™ anti-human CD198 (CCR8), PerCP/Cyanine5.5 anti-human CD198 (CCR8), Brilliant Violet 711™ anti-human CD198 (CCR8), Brilliant Violet 785™ anti-human CD198 (CCR8) Antibody, PE/Dazzle™ 594 anti-human CD198 (CCR8) Antibody

Product Data



Human peripheral blood lymphocytes were stained with anti-human CD3 (clone SK7) Pacific Blue™ and anti-human CD198 (CCR8) (clone S19016H) Brilliant Violet 711™ (left) or rat IgG2b, κ Brilliant Violet 711™ isotype control (right).

For Research Use Only. Not for diagnostic or therapeutic use.

This product is supplied subject to the terms and conditions, including the limited license, located at www.biolegend.com/terms ("Terms") and may be used only as provided in the Terms. Without limiting the foregoing, BioLegend products may not be used for any Commercial Purpose as defined in the Terms, resold in any form, used in manufacturing, or reverse engineered, sequenced, or otherwise studied or used to learn its design or composition without express written approval of BioLegend. Regardless of the information given in this document, user is solely responsible for determining any license requirements necessary for user's intended

use and assumes all risk and liability arising from use of the product. BioLegend is not responsible for patent infringement or any other risks or liabilities whatsoever resulting from the use of its products.

BioLegend, the BioLegend logo, and all other trademarks are property of BioLegend, Inc. or their respective owners, and all rights are reserved.

8999 BioLegend Way, San Diego, CA 92121 www.biolegend.com
Toll-Free Phone: 1-877-Bio-Legend (246-5343) Phone: (858) 768-5800 Fax: (877) 455-9587