

Brilliant Violet 750™ anti-mouse Siglec-G Antibody

Catalog# / Size	163315 / 50 µg
Clone	SH1
Regulatory Status	RUO
Other Names	Siglec10, Sialic acid-binding Ig-like lectin G
Isotype	Mouse IgG1, κ
Description	Siglec-G is a member of the CD33-related Siglec (sialic acid-binding, immunoglobulin-like lectin) family. Siglec-G is the orthologue of human Siglec-10. It is a 110-120 kDa, 688 amino acid type I transmembrane protein and contains five extracellular immunoglobulin domains and an intracellular region with three conserved tyrosine-based motifs. It is an inhibitory receptor that is expressed in a B cell-restricted way, with particularly high expression in Pre-B and B1a cells. Upon stimulation with an antigen, Siglec-G is recruited to IgM, which is further phosphorylated inhibiting IgM-induced Ca ²⁺ signaling and NFATc1 expression.

Product Details

Verified Reactivity	Mouse
Antibody Type	Monoclonal
Host Species	Mouse
Formulation	Phosphate-buffered solution, pH 7.2, containing 0.09% sodium azide and BSA (origin USA)
Preparation	The antibody was purified by affinity chromatography and conjugated with Brilliant Violet 750™ under optimal conditions.
Concentration	0.2 mg/mL
Storage & Handling	The antibody solution should be stored undiluted between 2°C and 8°C, and protected from prolonged exposure to light. Do not freeze.
Application	FC - Quality tested
Recommended Usage	<p>Each lot of this antibody is quality control tested by immunofluorescent staining with flow cytometric analysis. For flow cytometric staining, the suggested use of this reagent is ≤ 0.25 µg per million cells in 100 µL volume. It is recommended that the reagent be titrated for optimal performance for each application.</p> <p>Brilliant Violet 750™ excites at 405 nm and emits at 750 nm. The bandpass filter 780/60 nm is recommended for detection, although filter optimization may be required depending on other fluorophores used. Be sure to verify that your cytometer configuration and software setup are appropriate for detecting this channel. Refer to your instrument manual or manufacturer for support. Brilliant Violet 750™ is a trademark of Sirigen Group Ltd.</p> <p>Learn more about Brilliant Violet™.</p> <p>This product is subject to proprietary rights of Sirigen Inc. and is made and sold under license from Sirigen Inc. The purchase of this product conveys to the buyer a non-transferable right to use the purchased product for research purposes only. This product may not be resold or incorporated in any manner into another product for resale. Any use for therapeutics or diagnostics is strictly prohibited. This product is covered by U.S. Patent(s), pending patent applications and foreign equivalents.</p>
Excitation Laser	Violet Laser (405 nm)
RRID	AB_3698928 (BioLegend Cat. No. 163315)

Antigen Details

Structure	Type I transmembrane protein that contains five extracellular immunoglobulin domains and an intracellular region with three conserved tyrosine-based motifs.
Distribution	B cells
Function	Inhibits IgM-induced Ca ²⁺ signaling and NFATc1 expression
Ligand/Receptor	Lectin
Gene ID	243958

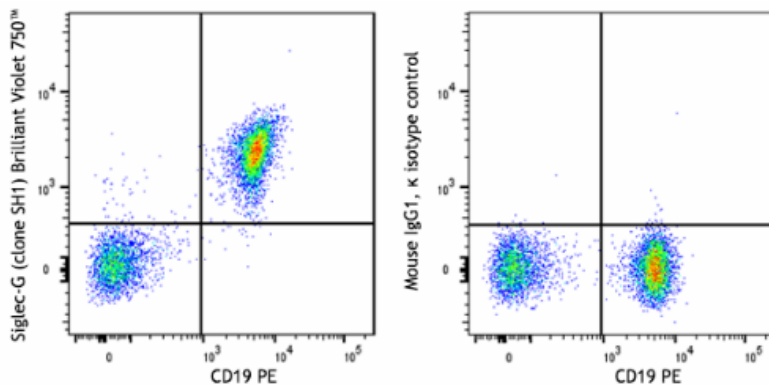
Related Protocols

- [Cell Surface Flow Cytometry Staining Protocol](#)

Other Formats

Purified anti-mouse Siglec-G Antibody, PE anti-mouse Siglec-G, Alexa Fluor® 647 anti-mouse Siglec-G, Spark UV™ 387 anti-mouse Siglec-G, Brilliant Violet 421™ anti-mouse Siglec-G, Siglec-G (clone SH1) Spark YG™ Antibody, Spark Red™ 718 anti-mouse Siglec-G Antibody, Brilliant Violet 750™ anti-mouse Siglec-G, Brilliant Violet 605™ anti-mouse Siglec-G Antibody, Brilliant Violet 650™ anti-mouse Siglec-G Antibody, Brilliant Violet 785™ anti-mouse Siglec-G Antibody, Brilliant Violet 510™ anti-mouse Siglec-G Antibody

Product Data



C57BL/6 mouse splenocytes were stained with anti-mouse CD19 (clone 6D5) PE and anti-mouse Siglec-G (clone SH1) Brilliant Violet 750™ (left) or mouse IgG1, κ Brilliant Violet 750™ isotype control (right).

For Research Use Only. Not for diagnostic or therapeutic use.

This product is supplied subject to the terms and conditions, including the limited license, located at www.biolegend.com/terms ("Terms") and may be used only as provided in the Terms. Without limiting the foregoing, BioLegend products may not be used for any Commercial Purpose as defined in the Terms, resold in any form, used in manufacturing, or reverse engineered, sequenced, or otherwise studied or used to learn its design or composition without express written approval of BioLegend. Regardless of the information given in this document, user is solely responsible for determining any license requirements necessary for user's intended use and assumes all risk and liability arising from use of the product. BioLegend is not responsible for patent infringement or any other risks or liabilities whatsoever resulting from the use of its products.

BioLegend, the BioLegend logo, and all other trademarks are property of BioLegend, Inc. or their respective owners, and all rights are reserved.

8999 BioLegend Way, San Diego, CA 92121 www.biolegend.com
Toll-Free Phone: 1-877-Bio-Legend (246-5343) Phone: (858) 768-5800 Fax: (877) 455-9587