

## FITC anti-human CD8a Antibody

<b>Catalog# / Size</b>	388705 / 25 tests 388706 / 100 tests
<b>Clone</b>	S21010A
<b>Regulatory Status</b>	RUO
<b>Other Names</b>	T8, Leu2, CD8 Antigen
<b>Isotype</b>	Mouse IgG1, $\kappa$
<b>Description</b>	CD8 $\alpha$ , also known as T8 or Leu2, is a 32-34 kD type 1 transmembrane glycoprotein part of the immunoglobulin superfamily. CD8 $\alpha$ is expressed on cytotoxic T cells, NK cells, as well as a majority of thymocytes. CD8 $\alpha$ can form a homodimer (CD8 $\alpha/\alpha$ ) or heterodimer (CD8 $\alpha/\beta$ ) with CD8 $\beta$ . CD8 $\alpha$ acts as a co-receptor with MHC class I-restricted T cell receptors in antigen recognition and T cell activation, and has been shown to play a role in thymic differentiation. Two domains in CD8 $\alpha$ are important for function: the extracellular Ig superfamily domain binds the $\alpha 3$ domain of MHC Class I and the cytoplasmic CXCP motif binds the tyrosine kinase p56 Lck.

### Product Details

---

<b>Verified Reactivity</b>	Human
<b>Antibody Type</b>	Monoclonal
<b>Host Species</b>	Mouse
<b>Immunogen</b>	Human CD8 $\alpha$ -transfected cells
<b>Formulation</b>	Phosphate-buffered solution, pH 7.2, containing 0.09% sodium azide and BSA (origin USA)
<b>Preparation</b>	The antibody was purified by affinity chromatography and conjugated with FITC under optimal conditions.
<b>Concentration</b>	Lot-specific (to obtain lot-specific concentration and expiration, please enter the lot number in our <a href="#">Certificate of Analysis</a> online tool.)
<b>Storage &amp; Handling</b>	The antibody solution should be stored undiluted between 2°C and 8°C, and protected from prolonged exposure to light. <b>Do not freeze.</b>
<b>Application</b>	<a href="#">FC - Quality tested</a>
<b>Recommended Usage</b>	Each lot of this antibody is quality control tested by <a href="#">immunofluorescent staining with flow cytometric analysis</a> . For flow cytometric staining, the suggested use of this reagent is 5 $\mu$ L per million cells in 100 $\mu$ L staining volume or 5 $\mu$ L per 100 $\mu$ L of whole blood. It is recommended that the reagent be titrated for optimal performance for each application.
<b>Excitation Laser</b>	Blue Laser (488 nm)
<b>Application Notes</b>	Clone S21010A can completely block the binding of clone HIT8a on target cells and can be blocked by HIT8a. Clone S21010A does not block the binding of clone SK1, clone RPA-T8, and clone S21010F.  Clone S21010A does not interfere with the binding of anti-human CD8 $\beta$ antibodies S21011A or QA20A40.  Clone S21010A shows comparable staining signals on 4% paraformaldehyde-fixed cells and unfixed cells.
<b>RRID</b>	AB_3662286 (BioLegend Cat. No. 388705) AB_3662286 (BioLegend Cat. No. 388706)

## Antigen Details

---

<b>Structure</b>	Ig superfamily
<b>Distribution</b>	Subset of T cells, most thymocytes, NK cells
<b>Function</b>	TCR co-receptor
<b>Interaction</b>	CD8 $\beta$
<b>Ligand/Receptor</b>	MHC Class I molecules
<b>Cell Type</b>	NK cells, T cells, Thymocytes
<b>Biology Area</b>	Immunology
<b>Molecular Family</b>	CD Molecules

### Antigen References

1. Barclay N, *et al.* 1993. The Leucocyte Antigen FactsBook. Academic Press Inc. San Diego.
2. Leahy, D.J, 1995. *FASEB J.* 9:17-25.

**Gene ID** [925](#)

## Related Protocols

---

- [Cell Surface Flow Cytometry Staining Protocol](#)

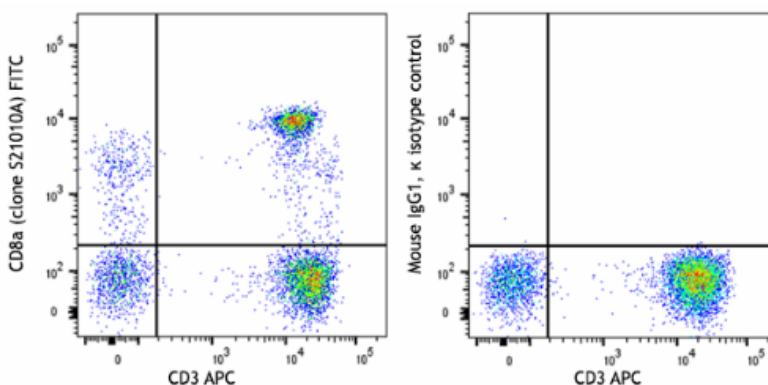
## Other Formats

---

Purified anti-human CD8a, PE anti-human CD8a, FITC anti-human CD8a, APC anti-human CD8a

## Product Data

---



Human peripheral blood lymphocytes were stained with anti-human CD3 (clone UCHT1) APC and anti-human CD8a (clone S21010A) FITC (left) or mouse IgG1,  $\kappa$  FITC isotype control (right).

For Research Use Only. Not for diagnostic or therapeutic use.

This product is supplied subject to the terms and conditions, including the limited license, located at [www.biolegend.com/terms](http://www.biolegend.com/terms) ("Terms") and may be used only as provided in the Terms. Without limiting the foregoing, BioLegend products may not be used for any Commercial Purpose as defined in the Terms, resold in any form, used in manufacturing, or reverse engineered, sequenced, or otherwise studied or used to learn its design or composition without express written approval of BioLegend. Regardless of the information given in this document, user is solely responsible for determining any license requirements necessary for user's intended use and assumes all risk and liability arising from use of the product. BioLegend is not responsible for patent infringement or any other risks or liabilities whatsoever resulting from the use of its products.

BioLegend, the BioLegend logo, and all other trademarks are property of BioLegend, Inc. or their respective owners, and all rights are reserved.

8999 BioLegend Way, San Diego, CA 92121 [www.biolegend.com](http://www.biolegend.com)  
Toll-Free Phone: 1-877-Bio-Legend (246-5343) Phone: (858) 768-5800 Fax: (877) 455-9587