

FITC anti-mouse CD235a (Glycophorin A) Antibody

Catalog# / Size	116707 / 25 µg 116708 / 100 µg
Clone	S21003A
Regulatory Status	RUO
Other Names	GPA, CD235a, GYPA, Sialoglycoprotein alpha, MN sialoglycoprotein, PAS-2, Monoclonal antibody to mouse Glycophorin A (GYPA / CD235a)
Isotype	Rat IgG2b, κ
Description	CD235a, also known as Glycophorin A (Gypa) is a type I transmembrane sialoglycoprotein that is expressed on mouse erythrocytes, erythroid precursor cells and certain leukemic cells. Glycophorin A has been proposed to be involved in translocation of SLC4A1 to the plasma membrane. Glycophorin A may also be involved in regulation of response to osmotic stress.

Product Details

Isotype Control	FITC Rat IgG2b, κ Isotype Ctrl
Verified Reactivity	Mouse
Antibody Type	Monoclonal
Host Species	Rat
Immunogen	Mouse Glycophorin A-transfectant cells
Formulation	Phosphate-buffered solution, pH 7.2, containing 0.09% sodium azide
Preparation	The antibody was purified by affinity chromatography and conjugated with FITC under optimal conditions.
Concentration	0.5 mg/mL
Storage & Handling	The antibody solution should be stored undiluted between 2°C and 8°C, and protected from prolonged exposure to light. Do not freeze.
Application	FC - Quality tested
Recommended Usage	Each lot of this antibody is quality control tested by immunofluorescent staining with flow cytometric analysis . For flow cytometric staining, the suggested use of this reagent is ≤ 2.0 µg per million cells in 100 µL volume. It is recommended that the reagent be titrated for optimal performance for each application.
Excitation Laser	Blue Laser (488 nm)
Application Notes	Clone S21003A does not block the binding of clone Ter-119 to target cells. Clone S21003A could induce RBCs aggregation at high concentration. Clone S21003A reacts with mouse CD235a (Glycophorin A).
RRID	AB_3698898 (BioLegend Cat. No. 116707) AB_3698898 (BioLegend Cat. No. 116708)

Antigen Details

Structure	CD235a is type I transmembrane sialoglycoprotein
------------------	--

Distribution	Expressed on mouse erythrocytes, erythroid precursor cells and certain leukemic cells
Function	Regulation of response to osmotic stress. May be involved in translocation of SLC4A1 to the plasma membrane
Cell Type	Erythrocytes
Biology Area	Cell Adhesion, Cell Biology, Immunology
Molecular Family	Adhesion Molecules, CD Molecules
Antigen References	<ol style="list-style-type: none"> 1. Arimitsu N, <i>et al.</i> 2003. <i>Genes Cells.</i> 8:769-777-77. 2. Devin RB, <i>et al.</i> 2016. <i>Proc Natl Acad Sci USA.</i> 113:5245-50.
Gene ID	14934

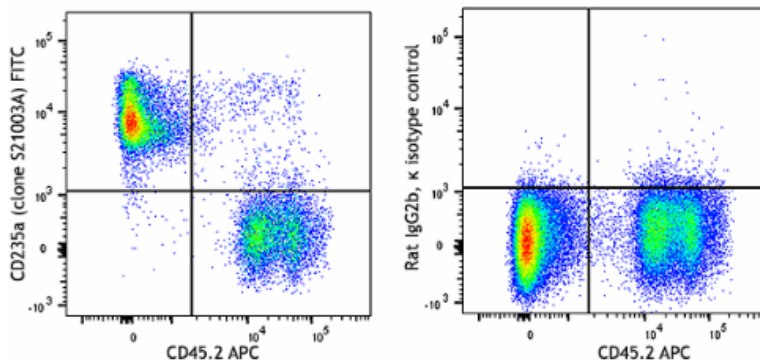
Related Protocols

- [Cell Surface Flow Cytometry Staining Protocol](#)

Other Formats

Purified anti-mouse CD235a (Glycophorin A), APC anti-mouse CD235a (Glycophorin A), PE anti-mouse CD235a (Glycophorin A), FITC anti-mouse CD235a (Glycophorin A) Antibody

Product Data



C57BL/6 mouse bone marrow cells were stained with anti-mouse CD45.2 (clone 104) APC and anti-mouse CD235a (Glycophorin A) (clone S21003A) FITC (left) or rat IgG2b, κ FITC isotype control (right). Data shown was gated on RBCs and lymphocytes.

For Research Use Only. Not for diagnostic or therapeutic use.

This product is supplied subject to the terms and conditions, including the limited license, located at www.biolegend.com/terms ("Terms") and may be used only as provided in the Terms. Without limiting the foregoing, BioLegend products may not be used for any Commercial Purpose as defined in the Terms, resold in any form, used in manufacturing, or reverse engineered, sequenced, or otherwise studied or used to learn its design or composition without express written approval of BioLegend. Regardless of the information given in this document, user is solely responsible for determining any license requirements necessary for user's intended use and assumes all risk and liability arising from use of the product. BioLegend is not responsible for patent infringement or any other risks or liabilities whatsoever resulting from the use of its products.

BioLegend, the BioLegend logo, and all other trademarks are property of BioLegend, Inc. or their respective owners, and all rights are reserved.

8999 BioLegend Way, San Diego, CA 92121 www.biolegend.com
Toll-Free Phone: 1-877-Bio-Legend (246-5343) Phone: (858) 768-5800 Fax: (877) 455-9587