

FITC anti-mouse CD52 Antibody

Catalog# / Size	166005 / 25 µg 166006 / 100 µg
Clone	S19014A
Regulatory Status	RUO
Other Names	CAMPATH-1 antigen
Isotype	Rat IgM, κ
Description	CD52, also known as Cambridge pathology antigen 1 (CAMPATH-1), is a 25-29 kD glycoprotein containing a large N-linked carbohydrate moiety. The actual molecule of CD52 is only 8-9 kD. It is expressed in the male reproductive tract and on virtually all lymphocytes (T and B cells), as well as macrophages/monocytes, eosinophils, and red cells. CD52 is thought to play a role in carrying and orienting carbohydrates. CD52 is a potent target for complement-mediated lysis and antibody-mediated cellular cytotoxicity and has been used as a depletion target for chronic lymphocytic leukemia (CLL)/lymphoma and immunosuppression.

Product Details

Verified Reactivity	Mouse
Antibody Type	Monoclonal
Host Species	Rat
Formulation	Phosphate-buffered solution, pH 7.2, containing 0.09% sodium azide
Preparation	The antibody was purified by affinity chromatography and conjugated with FITC under optimal conditions.
Concentration	0.5 mg/mL
Storage & Handling	The antibody solution should be stored undiluted between 2°C and 8°C, and protected from prolonged exposure to light. Do not freeze.
Application	FC - Quality tested
Recommended Usage	Each lot of this antibody is quality control tested by immunofluorescent staining with flow cytometric analysis . For flow cytometric staining, the suggested use of this reagent is ≤ 0.5 µg per million cells in 100 µL volume. It is recommended that the reagent be titrated for optimal performance for each application.
Excitation Laser	Blue Laser (488 nm)
RRID	AB_3675017 (BioLegend Cat. No. 166005) AB_3675017 (BioLegend Cat. No. 166006)

Antigen Details

Structure	CD52 is a peptide of 12 amino acids, anchored to glycosylphosphatidylinositol (GPI).
Distribution	Expressed on lymphohematopoietic tissues, including thymus, spleen, and bone marrow, but not in liver, kidney, and brain
Function	Promote cell-mediated killing (antibody-dependent cellular cytotoxicity)
Cell Type	Dendritic cells, Lymphocytes, Mesenchymal Stem Cells, Monocytes, Thymocytes
Biology Area	Cell Adhesion

Molecular Family Adhesion Molecules

Antigen References 1. Gudrun R, *et al.* 2002. *Blood*. 101:1422.

Gene ID [23833](#)

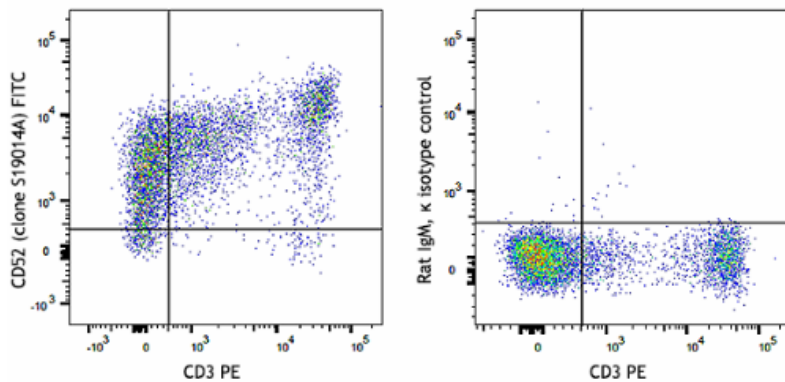
Related Protocols

- [Cell Surface Flow Cytometry Staining Protocol](#)

Other Formats

Ultra-LEAF™ Purified anti-mouse CD52, FITC anti-mouse CD52, Alexa Fluor® 647 anti-mouse CD52

Product Data



C57BL/6 mouse splenocytes were stained with anti-mouse CD3 (clone 17A2) PE and anti-mouse CD52 (clone S19014A) FITC (left) or rat IgM, κ FITC isotype control (right).

For Research Use Only. Not for diagnostic or therapeutic use.

This product is supplied subject to the terms and conditions, including the limited license, located at www.biolegend.com/terms ("Terms") and may be used only as provided in the Terms. Without limiting the foregoing, BioLegend products may not be used for any Commercial Purpose as defined in the Terms, resold in any form, used in manufacturing, or reverse engineered, sequenced, or otherwise studied or used to learn its design or composition without express written approval of BioLegend. Regardless of the information given in this document, user is solely responsible for determining any license requirements necessary for user's intended use and assumes all risk and liability arising from use of the product. BioLegend is not responsible for patent infringement or any other risks or liabilities whatsoever resulting from the use of its products.

BioLegend, the BioLegend logo, and all other trademarks are property of BioLegend, Inc. or their respective owners, and all rights are reserved.

8999 BioLegend Way, San Diego, CA 92121 www.biolegend.com
Toll-Free Phone: 1-877-Bio-Legend (246-5343) Phone: (858) 768-5800 Fax: (877) 455-9587