

## FITC anti-mouse Integrin $\alpha$ V $\beta$ 6 Antibody

<b>Catalog# / Size</b>	117503 / 25 $\mu$ g 117504 / 100 $\mu$ g
<b>Clone</b>	S20012B
<b>Regulatory Status</b>	RUO
<b>Other Names</b>	Integrin alpha V beta 6
<b>Isotype</b>	Rat IgG1, $\kappa$
<b>Description</b>	Integrins are heterodimeric transmembrane receptors that mediate cell-cell and cell-extracellular matrix adhesion. Integrin $\beta$ 6 associates exclusively with the $\alpha$ V subunit forming an $\alpha$ V $\beta$ 6 complex that is expressed specifically on epithelial cells. Integrin $\alpha$ V $\beta$ 6 is a receptor for multiple extracellular matrix (ECM) proteins, including tenascin, fibronectin, and vitronectin. It is also a receptor for the latency-associated peptide (LAP) of TGF- $\beta$ and is involved in TGF- $\beta$ activation. Its expression is upregulated during wound healing and in some cancers.

### Product Details

---

<b>Verified Reactivity</b>	Mouse
<b>Antibody Type</b>	Monoclonal
<b>Host Species</b>	Rat
<b>Immunogen</b>	Mouse $\alpha$ V $\beta$ 6 integrin-transfected cells
<b>Formulation</b>	Phosphate-buffered solution, pH 7.2, containing 0.09% sodium azide
<b>Preparation</b>	The antibody was purified by affinity chromatography and conjugated with FITC under optimal conditions.
<b>Concentration</b>	0.5 mg/mL
<b>Storage &amp; Handling</b>	The antibody solution should be stored undiluted between 2°C and 8°C, and protected from prolonged exposure to light. <b>Do not freeze.</b>
<b>Application</b>	<a href="#">FC - Quality tested</a>
<b>Recommended Usage</b>	Each lot of this antibody is quality control tested by <a href="#">immunofluorescent staining with flow cytometric analysis</a> . For flow cytometric staining, the suggested use of this reagent is $\leq$ 0.5 $\mu$ g per million cells in 100 $\mu$ L volume. It is recommended that the reagent be titrated for optimal performance for each application.
<b>Excitation Laser</b>	Blue Laser (488 nm)
<b>Application Notes</b>	Clone S20012B does not affect the binding of clone S20012E on target cells.  Clone S20012B does not react with mouse integrin $\alpha$ V $\beta$ 8.
<b>RRID</b>	AB_3698902 (BioLegend Cat. No. 117503) AB_3698902 (BioLegend Cat. No. 117504)

### Antigen Details

---

<b>Structure</b>	Integrins
<b>Distribution</b>	Epithelial cells
<b>Function</b>	Cell adhesion, TGF- $\beta$ activation

**Cell Type** Epithelial cells  
**Biology Area** Cell Adhesion, Cell Biology, Immunology  
**Molecular Family** Adhesion Molecules

**Antigen References**  
1. Sheppard D, *et al.* 1990. *J Biol Chem.* 265:11502-7.  
2. Koivisto L, *et al.* 2018. *Int J Biochem Cell Biol.* 99:186-196.

**Gene ID** [16410](#)  
[16420](#)

## Related Protocols

---

- [Cell Surface Flow Cytometry Staining Protocol](#)

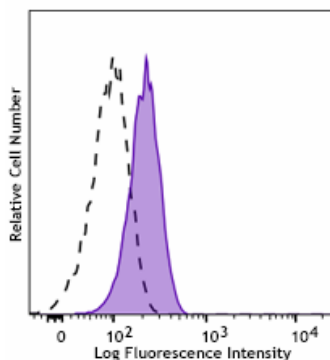
## Other Formats

---

Purified anti-mouse Integrin  $\alpha$ V $\beta$ 6, FITC anti-mouse Integrin  $\alpha$ V $\beta$ 6, PE/Cyanine7 anti-mouse Integrin  $\alpha$ V $\beta$ 6 Antibody, PE anti-mouse Integrin  $\alpha$ V $\beta$ 6 Antibody, APC anti-mouse Integrin  $\alpha$ V $\beta$ 6 Antibody

## Product Data

---



Mouse integrin  $\alpha$ V $\beta$ 6 transfected Ba/F3 cells were stained with anti-mouse Integrin  $\alpha$ V $\beta$ 6 (clone S20012B) FITC (filled histogram) or rat IgG2b,  $\lambda$  FITC isotype control (open histogram).

For Research Use Only. Not for diagnostic or therapeutic use.

This product is supplied subject to the terms and conditions, including the limited license, located at [www.biolegend.com/terms](http://www.biolegend.com/terms) ("Terms") and may be used only as provided in the Terms. Without limiting the foregoing, BioLegend products may not be used for any Commercial Purpose as defined in the Terms, resold in any form, used in manufacturing, or reverse engineered, sequenced, or otherwise studied or used to learn its design or composition without express written approval of BioLegend. Regardless of the information given in this document, user is solely responsible for determining any license requirements necessary for user's intended use and assumes all risk and liability arising from use of the product. BioLegend is not responsible for patent infringement or any other risks or liabilities whatsoever resulting from the use of its products.

BioLegend, the BioLegend logo, and all other trademarks are property of BioLegend, Inc. or their respective owners, and all rights are reserved.

8999 BioLegend Way, San Diego, CA 92121 [www.biolegend.com](http://www.biolegend.com)  
Toll-Free Phone: 1-877-Bio-Legend (246-5343) Phone: (858) 768-5800 Fax: (877) 455-9587