

## KIRAVIA Blue 520™ anti-human CX3CR1 Antibody

<b>Catalog# / Size</b>	355711 / 25 tests 355712 / 100 tests
<b>Clone</b>	K0124E1
<b>Regulatory Status</b>	RUO
<b>Other Names</b>	Chemokine C-X3-C receptor 1 (CX3CR1), V28, GPR13
<b>Isotype</b>	Mouse IgG1, κ
<b>Description</b>	CX3CR1 is a G-protein-coupled seven-transmembrane chemokine receptor, also known as GPR13 or V28. It is expressed on NK cells, T cell subset, monocytes/macrophages, dendritic cells, and some malignant epithelial cells. CX3CL1 (known as fractalkine, neurotactin) is the ligand of CX3CR1. CX3CL1 is a unique transmembrane molecule with a CX3C-motif chemokine domain and a mucin-like stalk. CX3CL1 is expressed by activated-endothelial cells, neurons, and astrocytes. The interaction of CX3CR1 and its ligand mediates cell firm adhesion and migration.

### Product Details

---

<b>Verified Reactivity</b>	Human
<b>Reported Reactivity</b>	Cynomolgus, Rhesus
<b>Antibody Type</b>	Monoclonal
<b>Host Species</b>	Mouse
<b>Immunogen</b>	DNA vaccine with the full coding sequence of human GPCR cloned in expression vector.
<b>Formulation</b>	Phosphate-buffered solution, pH 7.2, containing 0.09% sodium azide and BSA (origin USA)
<b>Preparation</b>	The antibody was purified by affinity chromatography and conjugated with KIRAVIA Blue 520™ under optimal conditions.
<b>Concentration</b>	Lot-specific (to obtain lot-specific concentration and expiration, please enter the lot number in our <a href="#">Certificate of Analysis</a> online tool.)
<b>Storage &amp; Handling</b>	The antibody solution should be stored undiluted between 2°C and 8°C, and protected from prolonged exposure to light. <b>Do not freeze.</b>
<b>Application</b>	<a href="#">FC - Quality tested</a>
<b>Recommended Usage</b>	<p>Each lot of this antibody is quality control tested by <a href="#">immunofluorescent staining with flow cytometric analysis</a>. For flow cytometric staining, the suggested use of this reagent is 5 µL per million cells in 100 µL staining volume or 5 µL per 100 µL of whole blood. It is recommended that the reagent be titrated for optimal performance for each application.</p> <p>* KIRAVIA Blue 520™ has an excitation maximum of 495 nm, and a maximum emission of 520 nm.</p> <p>KIRAVIA Blue™ 520 is a trademark of Sony. This product is subject to proprietary rights of Sony and is made and sold under license from Sony Corporation. This product is covered by U.S. Patent(s), pending patent applications and foreign equivalents.</p> <p>Sony and the Sony logo are registered trademarks of Sony Corporation.</p>
<b>Excitation Laser</b>	Blue Laser (488 nm)
<b>RRID</b>	AB_3683379 (BioLegend Cat. No. 355711) AB_3683379 (BioLegend Cat. No. 355712)

## Antigen Details

<b>Structure</b>	G-protein-coupled seven transmembrane receptor
<b>Distribution</b>	NK cells, T cell subset, monocytes/macrophages, dendritic cells
<b>Function</b>	Cell adhesion and migration
<b>Ligand/Receptor</b>	CX3CL1 (fractalkine, FKN, neurotactin)
<b>Cell Type</b>	Dendritic cells, Macrophages, Monocytes, NK cells, T cells
<b>Biology Area</b>	Cell Biology, Immunology, Innate Immunity, Neuroinflammation, Neuroscience, Neuroscience Cell Markers
<b>Molecular Family</b>	Cytokine/Chemokine Receptors, GPCR
<b>Antigen References</b>	1. Imai T, <i>et al.</i> 1997. <i>Cell</i> . 91:521. 2. Fong AM, <i>et al.</i> 1998. <i>J. Exp. Med.</i> 188:1413. 3. Auffray C, <i>et al.</i> 2009. <i>J. Exp. Med.</i> 206:595.
<b>Gene ID</b>	<a href="#">1524</a>

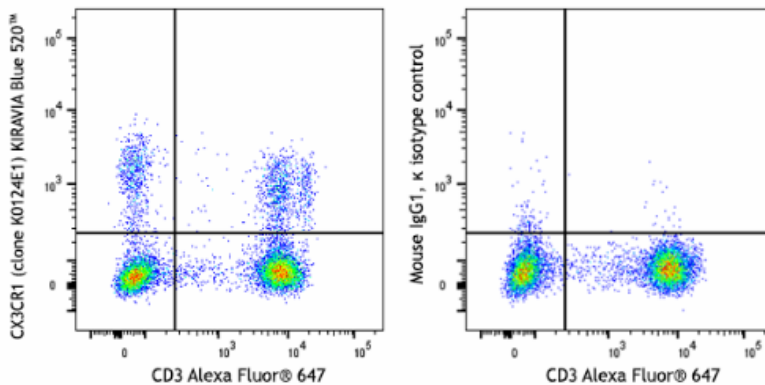
## Related Protocols

- [Cell Surface Flow Cytometry Staining Protocol](#)

## Other Formats

Purified anti-human CX3CR1, PE anti-human CX3CR1, TotalSeq™-C0179 anti-human CX3CR1, TotalSeq™-B0179 anti-human CX3CR1, TotalSeq™-A0179 anti-human CX3CR1, KIRAVIA Blue 520™ anti-human CX3CR1

## Product Data



Human peripheral blood lymphocytes were stained with anti-human CD3 (clone UCHT1) Alexa Fluor® 647 and anti-human CX3CR1 (clone K0124E1) KIRAVIA Blue 520™ (left) or mouse IgG1, κ KIRAVIA Blue 520™ isotype control (right).

For Research Use Only. Not for diagnostic or therapeutic use.

This product is supplied subject to the terms and conditions, including the limited license, located at [www.biolegend.com/terms](http://www.biolegend.com/terms) ("Terms") and may be used only as provided in the Terms. Without limiting the foregoing, BioLegend products may not be used for any Commercial Purpose as defined in the Terms, resold in any form, used in manufacturing, or reverse engineered, sequenced, or otherwise studied or used to learn its design or composition without express written approval of BioLegend. Regardless of the information given in this document, user is solely responsible for determining any license requirements necessary for user's intended use and assumes all risk and liability arising from use of the product. BioLegend is not responsible for patent infringement or any other risks or liabilities whatsoever resulting from the use of its products.

BioLegend, the BioLegend logo, and all other trademarks are property of BioLegend, Inc. or their respective owners, and all rights are reserved.

8999 BioLegend Way, San Diego, CA 92121 [www.biolegend.com](http://www.biolegend.com)  
Toll-Free Phone: 1-877-Bio-Legend (246-5343) Phone: (858) 768-5800 Fax: (877) 455-9587