

Pacific Blue™ anti-human CD10 Antibody

Catalog# / Size	312253 / 25 tests 312254 / 100 tests
Clone	HI10a
Regulatory Status	RUO
Workshop	V CD10.7
Other Names	Common acute lymphoblastic leukemia antigen (CALLA), Enkephalinase, Neutral endopeptidase, Neprilysin
Isotype	Mouse IgG1, κ
Description	CD10 is a 100 kD neutral endopeptidase and a member of the metalloprotease family. It is a type II transmembrane protein also known as common acute lymphoblastic leukemia antigen (CALLA), enkephalinase, and neprilysin. CD10 is expressed on B cell precursors, T cell precursors, and neutrophils. CD10 is involved in B cell development and has been shown to bind opioid enkephalins, bradykinin, angiotensins I and II, and other biologically active peptides.

Product Details

Verified Reactivity	Human, Cynomolgus, Rhesus
Reported Reactivity	African Green, Baboon, Capuchin monkey, Chimpanzee
Antibody Type	Monoclonal
Host Species	Mouse
Formulation	Phosphate-buffered solution, pH 7.2, containing 0.09% sodium azide and BSA (origin USA)
Preparation	The antibody was purified by affinity chromatography and conjugated with Pacific Blue™ under optimal conditions.
Concentration	Lot-specific (to obtain lot-specific concentration and expiration, please enter the lot number in our Certificate of Analysis online tool.)
Storage & Handling	The antibody solution should be stored undiluted between 2°C and 8°C, and protected from prolonged exposure to light. Do not freeze.
Application	FC - Quality tested
Recommended Usage	<p>Each lot of this antibody is quality control tested by immunofluorescent staining with flow cytometric analysis. For flow cytometric staining, the suggested use of this reagent is 5 µL per million cells in 100 µL staining volume or 5 µL per 100 µL of whole blood. It is recommended that the reagent be titrated for optimal performance for each application.</p> <p>* Pacific Blue™ has a maximum emission of 455 nm when it is excited at 405 nm. Prior to using Pacific Blue™ conjugate for flow cytometric analysis, please verify your flow cytometer's capability of exciting and detecting the fluorochrome.</p> <p>Alexa Fluor® and Pacific Blue™ are trademarks of Life Technologies Corporation.</p> <p>View full statement regarding label licenses</p>
Excitation Laser	Violet Laser (405 nm)
RRID	AB_3683325 (BioLegend Cat. No. 312253) AB_3683325 (BioLegend Cat. No. 312254)

Antigen Details

Structure	Type II transmembrane metalloprotease family, 100 kD
Distribution	B cell precursors, T cell precursors, neutrophils
Function	Zinc-binding metalloproteinase, B cell development
Ligand/Receptor	Biologically active peptides including opioid enkephalins, bradykinin, angiotensins I & II
Cell Type	B cells, Neutrophils
Biology Area	Immunology
Molecular Family	CD Molecules
Antigen References	1. Shipp M, <i>et al.</i> 1993. <i>Blood</i> 82:1052. 2. Lu B, <i>et al.</i> 1995. <i>J. Exp. Med.</i> 181:2271.
Gene ID	4311

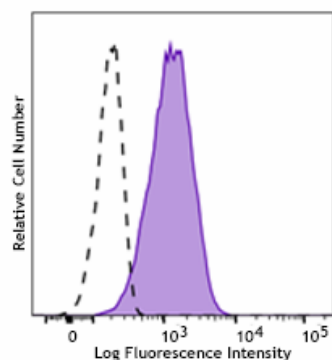
Related Protocols

- [Cell Surface Flow Cytometry Staining Protocol](#)

Other Formats

Purified anti-human CD10, PE anti-human CD10, PE/Cyanine5 anti-human CD10, FITC anti-human CD10, APC anti-human CD10, APC/Cyanine7 anti-human CD10, PE/Cyanine7 anti-human CD10, PerCP/Cyanine5.5 anti-human CD10, Brilliant Violet 421™ anti-human CD10, Brilliant Violet 510™ anti-human CD10, Brilliant Violet 605™ anti-human CD10, Purified anti-human CD10 (Maxpar® Ready), Brilliant Violet 711™ anti-human CD10, PE/Dazzle™ 594 anti-human CD10, APC/Fire™ 750 anti-human CD10, TotalSeq™-A0062 anti-human CD10, TotalSeq™-C0062 anti-human CD10, TotalSeq™-B0062 anti-human CD10, Brilliant Violet 785™ anti-human CD10, TotalSeq™-D0062 anti-human CD10, GMP APC anti-human CD10, GMP FITC anti-human CD10, GMP PE/Cyanine7 anti-human CD10, GMP PE anti-human CD10, GMP PerCP/Cyanine5.5 anti-human CD10, Brilliant Violet 650™ anti-human CD10, GMP PE/Dazzle™ 594 anti-human CD10, Brilliant Violet 750™ anti-human CD10, Spark Violet™ 423 anti-human CD10, Spark YG™ 593 anti-human CD10, Spark Blue™ 574 anti-human CD10, PE/Fire™ 640 anti-human CD10, Pacific Blue™ anti-human CD10 Antibody

Product Data



Human peripheral blood granulocytes were stained with anti-human CD10 (clone HI10a) Pacific Blue™ (filled histogram) or mouse IgG1, κ Pacific Blue™ isotype control (open histogram).

For Research Use Only. Not for diagnostic or therapeutic use.

This product is supplied subject to the terms and conditions, including the limited license, located at www.biolegend.com/terms ("Terms") and may be used only as provided in the Terms. Without limiting the foregoing, BioLegend products may not be used for any Commercial Purpose as defined in the Terms, resold in any form, used in manufacturing, or reverse engineered, sequenced, or otherwise studied or used to learn its design or composition without express written approval of BioLegend. Regardless of the information given in this document, user is solely responsible for determining any license requirements necessary for user's intended use and assumes all risk and liability arising from use of the product. BioLegend is not responsible for patent infringement or any other risks or liabilities whatsoever resulting from the use of its products.

BioLegend, the BioLegend logo, and all other trademarks are property of BioLegend, Inc. or their respective owners, and all rights are reserved.

8999 BioLegend Way, San Diego, CA 92121 www.biolegend.com
Toll-Free Phone: 1-877-Bio-Legend (246-5343) Phone: (858) 768-5800 Fax: (877) 455-9587