

## Pacific Blue™ anti-human CD235a (Glycophorin A) Recombinant Antibody

<b>Catalog# / Size</b>	379005 / 25 tests 379006 / 100 tests
<b>Clone</b>	QA19A08
<b>Regulatory Status</b>	RUO
<b>Other Names</b>	PAS-2, Sialoglycoprotein alpha, MN sialoglycoprotein, Glycophorin A, MNS blood group, GYPA
<b>Isotype</b>	Mouse IgG2a, κ
<b>Description</b>	CD235a (Glycophorin A) is member of the glycophorin A family. It is a type I sialoglycoprotein with a molecular weight of 10 kD, present in the cell membrane as a homodimer. Glycophorin A is expressed by erythroid precursors and erythrocytes. It carries the antigen determinants for the MNS blood groups and has been proposed to be an inhibitor of hemagglutination and hemolysis. Glycophorin A binds siglec 5, the erythrocyte binding antigen (EBA-175) of <i>P. falciparum</i> and some viruses, including influenza virus and hepatitis A virus.

### Product Details

---

<b>Verified Reactivity</b>	Human
<b>Antibody Type</b>	Recombinant
<b>Host Species</b>	Mouse
<b>Formulation</b>	Phosphate-buffered solution, pH 7.2, containing 0.09% sodium azide and BSA (origin USA)
<b>Preparation</b>	The antibody was purified by affinity chromatography and conjugated with Pacific Blue™ under optimal conditions.
<b>Concentration</b>	Lot-specific (to obtain lot-specific concentration and expiration, please enter the lot number in our <a href="#">Certificate of Analysis</a> online tool.)
<b>Storage &amp; Handling</b>	The antibody solution should be stored undiluted between 2°C and 8°C, and protected from prolonged exposure to light. <b>Do not freeze.</b>
<b>Application</b>	<a href="#">FC - Quality tested</a>
<b>Recommended Usage</b>	<p>Each lot of this antibody is quality control tested by <a href="#">immunofluorescent staining with flow cytometric analysis</a>. For flow cytometric staining, the suggested use of this reagent is 5 µL per million cells in 100 µL staining volume or 5 µL per 100 µL of whole blood. It is recommended that the reagent be titrated for optimal performance for each application.</p> <p>* Pacific Blue™ has a maximum emission of 455 nm when it is excited at 405 nm. Prior to using Pacific Blue™ conjugate for flow cytometric analysis, please verify your flow cytometer's capability of exciting and detecting the fluorochrome.</p> <p>Alexa Fluor® and Pacific Blue™ are trademarks of Life Technologies Corporation.</p> <p><a href="#">View full statement regarding label licenses</a></p>
<b>Excitation Laser</b>	Violet Laser (405 nm)
<b>RRID</b>	AB_3683418 (BioLegend Cat. No. 379005) AB_3683418 (BioLegend Cat. No. 379006)

### Antigen Details

---

<b>Structure</b>	Member of the glycophorin A family; type I protein with a molecular weight of 10 kD; present in the membrane as homodimer
------------------	---

<b>Distribution</b>	Erythrocytes and erythroid precursors
<b>Function</b>	Possible inhibitor of hemagglutination and hemolysis; carries the antigen determinants for the MNS blood groups
<b>Ligand/Receptor</b>	Siglec 5, erythrocyte binding antigen (EBA-175) of <i>P. falciparum</i> , receptor for the influenza virus, hepatitis A virus
<b>Antigen References</b>	<ol style="list-style-type: none"> <li>1. Reid ME. 2009. <i>Immunohematology</i>. 25:95-101.</li> <li>2. Palacajornsuk P. 2006. <i>Immunohematology</i>. 22:171-82.</li> <li>3. Pasvol G. 2003. <i>Trends Parasitol</i>. 19:430-2.</li> <li>4. Takakuwa Y. 2001. <i>Curr Opin Hematol</i>. 8:80-4.</li> </ol>
<b>Gene ID</b>	<a href="#">2993</a>

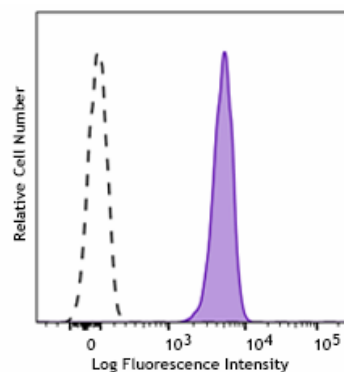
## Related Protocols

- [Cell Surface Flow Cytometry Staining Protocol](#)

## Other Formats

Purified anti-human CD235a (Glycophorin A) Recombinant Antibody, APC anti-human CD235a (Glycophorin A) Recombinant Antibody, Pacific Blue™ anti-human CD235a (Glycophorin A) Recombinant Antibody, APC/Cyanine7 anti-human CD235a (Glycophorin A) Recombinant Antibody, PE anti-human CD235a (Glycophorin A) Recombinant Antibody, PE/Cyanine7 anti-human CD235a (Glycophorin A) Recombinant, PerCP/Cyanine5.5 anti-human CD235a (Glycophorin A) Recombinant, FITC anti-human CD235a (Glycophorin A) Recombinant Antibody

## Product Data



Human red blood cells were stained with anti-human CD235a (Glycophorin A) recombinant (clone QA19A08) Pacific Blue™ (filled histogram) or mouse IgG2a, κ Pacific Blue™ isotype control (open histogram).

For Research Use Only. Not for diagnostic or therapeutic use.

This product is supplied subject to the terms and conditions, including the limited license, located at [www.biolegend.com/terms](http://www.biolegend.com/terms) ("Terms") and may be used only as provided in the Terms. Without limiting the foregoing, BioLegend products may not be used for any Commercial Purpose as defined in the Terms, resold in any form, used in manufacturing, or reverse engineered, sequenced, or otherwise studied or used to learn its design or composition without express written approval of BioLegend. Regardless of the information given in this document, user is solely responsible for determining any license requirements necessary for user's intended use and assumes all risk and liability arising from use of the product. BioLegend is not responsible for patent infringement or any other risks or liabilities whatsoever resulting from the use of its products.

BioLegend, the BioLegend logo, and all other trademarks are property of BioLegend, Inc. or their respective owners, and all rights are reserved.

8999 BioLegend Way, San Diego, CA 92121 [www.biolegend.com](http://www.biolegend.com)  
Toll-Free Phone: 1-877-Bio-Legend (246-5343) Phone: (858) 768-5800 Fax: (877) 455-9587