

Pacific Blue™ anti-mouse/rat XCR1 Antibody

Catalog# / Size	148241 / 25 µg 148242 / 100 µg
Clone	ZET
Regulatory Status	RUO
Other Names	GPR5, CCXCR1, mXCR1, Lymphotactin receptor, SCM1 receptor, XC chemokine receptor 1
Isotype	Mouse IgG2b, κ
Description	XCR1, also known as GPR5 or CCXCR1, is a 38 kD, G-protein coupled, seven transmembrane receptor, and the only member of the "C" chemokine receptor family. XCR1 mediates chemotaxis of XCL1 and XCL2 (lymphotactin-1 and -2), and defines a subset of CD8α ⁺ conventional dendritic cells capable of antigen cross-presentation.

Product Details

Verified Reactivity	Mouse, Rat
Antibody Type	Monoclonal
Host Species	Mouse
Formulation	Phosphate-buffered solution, pH 7.2, containing 0.09% sodium azide
Preparation	The antibody was purified by affinity chromatography and conjugated with Pacific Blue™ under optimal conditions.
Concentration	0.5 mg/mL
Storage & Handling	The antibody solution should be stored undiluted between 2°C and 8°C, and protected from prolonged exposure to light. Do not freeze.
Application	FC - Quality tested
Recommended Usage	<p>Each lot of this antibody is quality control tested by immunofluorescent staining with flow cytometric analysis. For flow cytometric staining, the suggested use of this reagent is ≤ 0.5 µg per million cells in 100 µL volume. It is recommended that the reagent be titrated for optimal performance for each application.</p> <p>* Pacific Blue™ has a maximum emission of 455 nm when it is excited at 405 nm. Prior to using Pacific Blue™ conjugate for flow cytometric analysis, please verify your flow cytometer's capability of exciting and detecting the fluorochrome.</p> <p>Alexa Fluor® and Pacific Blue™ are trademarks of Life Technologies Corporation.</p> <p>View full statement regarding label licenses</p>
Excitation Laser	Violet Laser (405 nm)
Application Notes	Additional reported applications (for the relevant formats) include: immunohistochemical staining on frozen tissues ² .
Application References	<ol style="list-style-type: none">1. Gurka S, <i>et al.</i> 2015. <i>Front Immunol.</i> 6:35. (FC)2. Kitazawa Y, <i>et al.</i> 2019. <i>Front Immunol.</i> 10:1195. (FC, IHC-F)
(PubMed link indicates BioLegend citation)	
RRID	AB_3674997 (BioLegend Cat. No. 148241) AB_3674997 (BioLegend Cat. No. 148242)

Antigen Details

Structure	Only member of the "C" chemokine receptor family, seven transmembrane receptor, coupled to G protein, 38 kD.
Distribution	Subset of CD8 α ⁺ conventional dendritic cells.
Function	Mediates chemotaxis to XCL1, defines a population of CD8 α ⁺ dendritic cells capable of antigen cross-presentation to CD8 ⁺ T cells.
Ligand/Receptor	XCL1 and XCL2.
Cell Type	Dendritic cells
Biology Area	Cell Biology, Immunology, Innate Immunity, Signal Transduction
Molecular Family	Cytokine/Chemokine Receptors, GPCR
Antigen References	1. Yamazaki C, <i>et al.</i> 2013. <i>J. Immunol.</i> 190:6071. 2. Shimizu K, <i>et al.</i> 2013. <i>J. Immunol.</i> 190:5609. 3. Bachem A, <i>et al.</i> 2012. <i>Front. Immunol.</i> 3:214. 4. Crozat K, <i>et al.</i> 2011. <i>J. Immunol.</i> 187:4411.
Gene ID	23832 301086

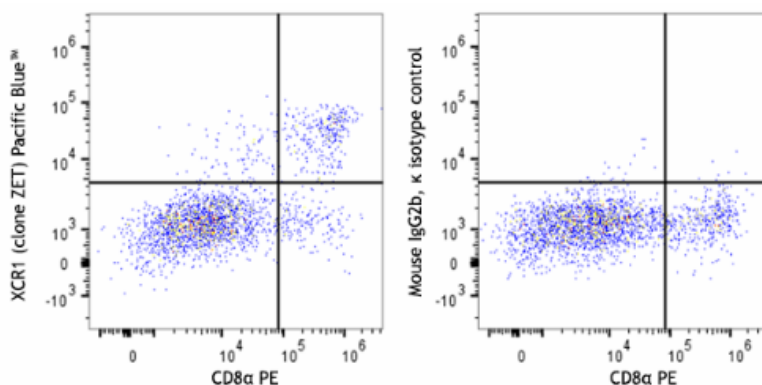
Related Protocols

- [Cell Surface Flow Cytometry Staining Protocol](#)

Other Formats

PE anti-mouse/rat XCR1, Purified anti-mouse/rat XCR1, APC anti-mouse/rat XCR1, PerCP/Cyanine5.5 anti-mouse/rat XCR1, FITC anti-mouse/rat XCR1, Biotin anti-mouse/rat XCR1, Alexa Fluor® 647 anti-mouse/rat XCR1, Brilliant Violet 421™ anti-mouse/rat XCR1, Brilliant Violet 510™ anti-mouse/rat XCR1, Brilliant Violet 650™ anti-mouse/rat XCR1, APC/Cyanine7 anti-mouse/rat XCR1, Brilliant Violet 785™ anti-mouse/rat XCR1, TotalSeq™-A0568 anti-mouse/rat XCR1, TotalSeq™-C0568 anti-mouse/rat XCR1, TotalSeq™-B0568 anti-mouse/rat XCR1 Antibody, PE/Dazzle™ 594 anti-mouse/rat XCR1, Brilliant Violet 605™ anti-mouse/rat XCR1, Spark UV™ 387 anti-mouse/rat XCR1, PE/Cyanine7 anti-mouse/rat XCR1, Spark PLUS UV395™ anti-mouse/rat XCR1, Pacific Blue™ anti-mouse/rat XCR1, Alexa Fluor® 700 anti-mouse/rat XCR1, Brilliant Violet 711™ anti-mouse/rat XCR1, Brilliant Violet 570™ anti-mouse/rat XCR1, Spark Red™ 718 anti-mouse/rat XCR1 (Flexi-Fluor™), Spark Blue™ 574 anti-mouse/rat XCR1 (Flexi-Fluor™), Spark Blue™ 550 anti-mouse/rat XCR1 (Flexi-Fluor™), Spark YG™ 581 anti-mouse/rat XCR1 (Flexi-Fluor™), Spark YG™ 593 anti-mouse/rat XCR1 (Flexi-Fluor™) Antibody, Spark NIR™ 685 anti-mouse/rat XCR1 (Flexi-Fluor™) Antibody

Product Data



Cells from collagenase-digested C57BL/6 mouse spleen were stained with anti-mouse CD11c (clone N418) FITC, anti-mouse CD8 α (clone 53-6.7) PE, and anti-mouse/rat XCR1 (clone ZET) Pacific Blue™ (left) or mouse IgG2b, κ Pacific Blue™ isotype control (right). Data shown was gated on the CD11c⁺ population.

This product is supplied subject to the terms and conditions, including the limited license, located at www.biolegend.com/terms ("Terms") and may be used only as provided in the Terms. Without limiting the foregoing, BioLegend products may not be used for any Commercial Purpose as defined in the Terms, resold in any form, used in manufacturing, or reverse engineered, sequenced, or otherwise studied or used to learn its design or composition without express written approval of BioLegend. Regardless of the information given in this document, user is solely responsible for determining any license requirements necessary for user's intended use and assumes all risk and liability arising from use of the product. BioLegend is not responsible for patent infringement or any other risks or liabilities whatsoever resulting from the use of its products.

BioLegend, the BioLegend logo, and all other trademarks are property of BioLegend, Inc. or their respective owners, and all rights are reserved.

8999 BioLegend Way, San Diego, CA 92121 www.biolegend.com
Toll-Free Phone: 1-877-Bio-Legend (246-5343) Phone: (858) 768-5800 Fax: (877) 455-9587