

PE anti-human AXL Antibody

Catalog# / Size	386507 / 25 tests 386508 / 100 tests
Clone	S21005C
Regulatory Status	RUO
Other Names	ARK, AXL receptor tyrosine kinase, AXL transforming sequence/gene, AXL oncogene, JTK11, Tyro7, tyrosine-protein kinase receptor UFO
Isotype	Mouse IgG1, κ
Description	AXL, also known as ARK or UFO, is a widely expressed glycoprotein in the TAM (Tyr03/Dtk, AXL, and Mer) receptor tyrosine kinase family. AXL is highly expressed in solid cancers. It is also expressed on a small population of human dendritic cells that share characteristics of classical and plasmacytoid dendritic cells. AXL binds the vitamin K-dependent growth arrest specific 6 (Gas6) protein and induces receptor autophosphorylation and downstream signaling pathways that are related to cell proliferation, migration, or apoptosis. AXL is also involved in hematopoiesis, embryonic development, tumorigenesis, and regulation of testicular functions. Recent studies have also shown that AXL and Mer are both linked to Alzheimer's disease.

Product Details

Verified Reactivity	Human
Antibody Type	Monoclonal
Host Species	Mouse
Formulation	Phosphate-buffered solution, pH 7.2, containing 0.09% sodium azide and BSA (origin USA)
Preparation	The antibody was purified by affinity chromatography and conjugated with PE under optimal conditions.
Concentration	Lot-specific (to obtain lot-specific concentration and expiration, please enter the lot number in our Certificate of Analysis online tool.)
Storage & Handling	The antibody solution should be stored undiluted between 2°C and 8°C, and protected from prolonged exposure to light. Do not freeze.
Application	FC - Quality tested
Recommended Usage	Each lot of this antibody is quality control tested by immunofluorescent staining with flow cytometric analysis . For flow cytometric staining, the suggested use of this reagent is 5 μ L per million cells in 100 μ L staining volume or 5 μ L per 100 μ L of whole blood. It is recommended that the reagent be titrated for optimal performance for each application.
Excitation Laser	Blue Laser (488 nm) Green Laser (532 nm)/Yellow-Green Laser (561 nm)
Application Notes	Clone S21005C recognizes a different epitope compared to clone S21005B. Clone S21005C does not block GAS6 induced AKT and ERK phosphorylation in H1299 cells.
RRID	AB_3675110 (BioLegend Cat. No. 386507) AB_3675110 (BioLegend Cat. No. 386508)

Antigen Details

Structure	Transmembrane protein with two fibronectin type-III domains, two Ig-like C2-type domains, and one tyrosine kinase domain
------------------	--

Distribution	Highly expressed in solid cancers and also expressed on human blood plasmacytoid dendritic cells and myeloid dendritic cells
Function	Binding of Gas6 induces receptor autophosphorylation and downstream signaling pathways that are related to cell proliferation, migration, or apoptosis. It is involved in hematopoiesis, embryonic development, tumorigenesis, and regulation of testicular functions. Recent studies have shown that AXL and Mer are both linked to Alzheimer's disease.
Ligand/Receptor	Gas6 and Protein S
Cell Type	Dendritic cells, NK cells
Biology Area	Apoptosis/Tumor Suppressors/Cell Death, Cardiovascular Biology, Cell Death, Cell Proliferation and Viability, Immuno-Oncology, Signal Transduction
Molecular Family	Cytokine/Chemokine Receptors, Cytokines/Chemokines
Antigen References	<ol style="list-style-type: none"> Holland S, <i>et al.</i> 2005. <i>Canc Res.</i> 65:9294-303. Lee WP, <i>et al.</i> 2002. <i>Oncogene.</i> 21:329-36. Demarchi F, <i>et al.</i> 2001. <i>J Biol Chem.</i> 276:31738-44.
Gene ID	558

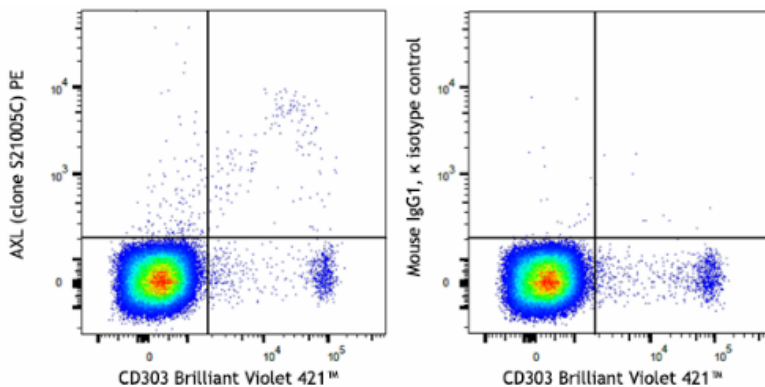
Related Protocols

- [Cell Surface Flow Cytometry Staining Protocol](#)

Other Formats

Purified anti-human AXL, PE/Dazzle™ 594 anti-human AXL, PerCP/Cyanine5.5 anti-human AXL, PE anti-human AXL, Brilliant Violet 421™ anti-human AXL, APC/Cyanine7 anti-human AXL

Product Data



Human peripheral blood mononuclear cells were stained with a lineage panel of anti-human CD3/CD19/CD14/CD15 APC, anti-human CD303 (clone 201A) Brilliant Violet 421™ and anti-human AXL (clone S21005C) PE (left) or mouse IgG1, κ PE isotype control (right). Data shown was gated on the lineage-negative population.

For Research Use Only. Not for diagnostic or therapeutic use.

This product is supplied subject to the terms and conditions, including the limited license, located at www.biolegend.com/terms ("Terms") and may be used only as provided in the Terms. Without limiting the foregoing, BioLegend products may not be used for any Commercial Purpose as defined in the Terms, resold in any form, used in manufacturing, or reverse engineered, sequenced, or otherwise studied or used to learn its design or composition without express written approval of BioLegend. Regardless of the information given in this document, user is solely responsible for determining any license requirements necessary for user's intended use and assumes all risk and liability arising from use of the product. BioLegend is not responsible for patent infringement or any other risks or liabilities whatsoever resulting from the use of its products.

BioLegend, the BioLegend logo, and all other trademarks are property of BioLegend, Inc. or their respective owners, and all rights are reserved.

8999 BioLegend Way, San Diego, CA 92121 www.biolegend.com
Toll-Free Phone: 1-877-Bio-Legend (246-5343) Phone: (858) 768-5800 Fax: (877) 455-9587