

## PE anti-human CD158h (KIR2DS1) Antibody

|                          |                                                                                                                                                                                                                                                                                                                                                                                                                                                                                                                                                                                                                                                                                                                                                                                                         |
|--------------------------|---------------------------------------------------------------------------------------------------------------------------------------------------------------------------------------------------------------------------------------------------------------------------------------------------------------------------------------------------------------------------------------------------------------------------------------------------------------------------------------------------------------------------------------------------------------------------------------------------------------------------------------------------------------------------------------------------------------------------------------------------------------------------------------------------------|
| <b>Catalog# / Size</b>   | 335007 / 25 tests<br>335008 / 100 tests                                                                                                                                                                                                                                                                                                                                                                                                                                                                                                                                                                                                                                                                                                                                                                 |
| <b>Clone</b>             | S22019F                                                                                                                                                                                                                                                                                                                                                                                                                                                                                                                                                                                                                                                                                                                                                                                                 |
| <b>Regulatory Status</b> | RUO                                                                                                                                                                                                                                                                                                                                                                                                                                                                                                                                                                                                                                                                                                                                                                                                     |
| <b>Other Names</b>       | CD158H, Killer Cell Immunoglobulin-Like Receptor 2DS1, KIR2DS1                                                                                                                                                                                                                                                                                                                                                                                                                                                                                                                                                                                                                                                                                                                                          |
| <b>Isotype</b>           | Mouse IgG1, $\kappa$                                                                                                                                                                                                                                                                                                                                                                                                                                                                                                                                                                                                                                                                                                                                                                                    |
| <b>Description</b>       | CD158 molecules, also known as KIRs (killer cell immunoglobulin-like receptors), are a family of transmembrane proteins with either two (KIR2D) or three (KIR3D) Ig-like extracellular domains. Some KIRs with long cytoplasmic domains contain ITIMs and possess inhibitory functions and others with short cytoplasmic region lack ITIMs and have activation functions. Fifteen polymorphic KIR genes have been reported in humans. CD158h is a 50 kD, single-pass glycoprotein with two extracellular Ig domains that contains a short cytoplasmic tail and does not contain an intracellular ITIM domain. It is expressed primarily on a subset of NK cells and a subset of T cells. KIR2DS1 is reported to bind certain HLA-C antigens on target cells (HLA-C*02, HLA-C*04, HLAC*06, for example). |

### Product Details

---

|                               |                                                                                                                                                                                                                                                                                                                                                                                                           |
|-------------------------------|-----------------------------------------------------------------------------------------------------------------------------------------------------------------------------------------------------------------------------------------------------------------------------------------------------------------------------------------------------------------------------------------------------------|
| <b>Verified Reactivity</b>    | Human                                                                                                                                                                                                                                                                                                                                                                                                     |
| <b>Antibody Type</b>          | Monoclonal                                                                                                                                                                                                                                                                                                                                                                                                |
| <b>Host Species</b>           | Mouse                                                                                                                                                                                                                                                                                                                                                                                                     |
| <b>Immunogen</b>              | KIR2DS1 transfected cells                                                                                                                                                                                                                                                                                                                                                                                 |
| <b>Formulation</b>            | Phosphate-buffered solution, pH 7.2, containing 0.09% sodium azide and BSA (origin USA)                                                                                                                                                                                                                                                                                                                   |
| <b>Preparation</b>            | The antibody was purified by affinity chromatography and conjugated with PE under optimal conditions.                                                                                                                                                                                                                                                                                                     |
| <b>Concentration</b>          | Lot-specific (to obtain lot-specific concentration and expiration, please enter the lot number in our <a href="#">Certificate of Analysis</a> online tool.)                                                                                                                                                                                                                                               |
| <b>Storage &amp; Handling</b> | The antibody solution should be stored undiluted between 2°C and 8°C, and protected from prolonged exposure to light. <b>Do not freeze.</b>                                                                                                                                                                                                                                                               |
| <b>Application</b>            | <a href="#">FC - Quality tested</a>                                                                                                                                                                                                                                                                                                                                                                       |
| <b>Recommended Usage</b>      | Each lot of this antibody is quality control tested by <a href="#">immunofluorescent staining with flow cytometric analysis</a> . For flow cytometric staining, the suggested use of this reagent is 5 $\mu$ L per million cells in 100 $\mu$ L staining volume or 5 $\mu$ L per 100 $\mu$ L of whole blood. It is recommended that the reagent be titrated for optimal performance for each application. |
| <b>Excitation Laser</b>       | Blue Laser (488 nm)<br>Green Laser (532 nm)/Yellow-Green Laser (561 nm)                                                                                                                                                                                                                                                                                                                                   |
| <b>Application Notes</b>      | Based on in-house testing, clone S22019F does not react to other KIR protein family members.                                                                                                                                                                                                                                                                                                              |

### Antigen Details

---

|                     |                                                     |
|---------------------|-----------------------------------------------------|
| <b>Structure</b>    | 50 kD two Ig-like extracellular domain glycoprotein |
| <b>Distribution</b> | Subset of NK cells, small subset of T Cells         |
| <b>Function</b>     | NK cell regulation                                  |

|                         |                                           |
|-------------------------|-------------------------------------------|
| <b>Ligand/Receptor</b>  | Some HLA-C molecules                      |
| <b>Cell Type</b>        | Lymphocytes, NK cells, T cells            |
| <b>Biology Area</b>     | Cell Biology, Immunology, Innate Immunity |
| <b>Molecular Family</b> | CD Molecules                              |

**Antigen References**

1. Biassoni, R. *et al.* 1996. *J Exp Med.* 183:645-50.
2. Stewart CA, *et al.* 2005. *Proc Natl Acad Sci.* 102:13224-9.
3. Lanier, LL. 2005. *Annu Rev Immunol.* 23:225-74.

**Gene ID** [3806](#)

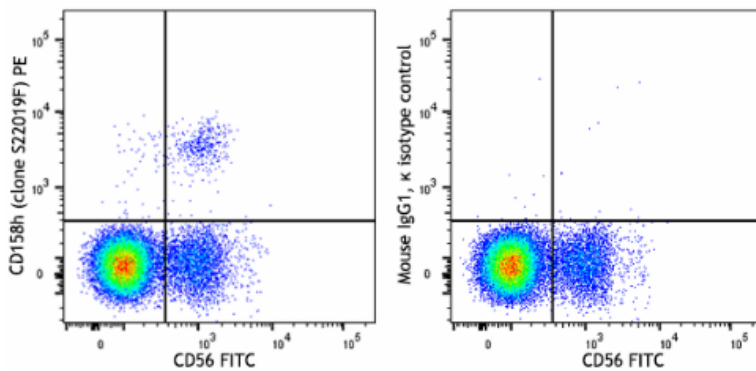
**Related Protocols**

- [Cell Surface Flow Cytometry Staining Protocol](#)

**Other Formats**

Purified anti-human CD158h (KIR2DS1), APC anti-human CD158h (KIR2DS1) Antibody, PE anti-human CD158h (KIR2DS1) Antibody, PE/Cyanine7 anti-human CD158h (KIR2DS1) Antibody

**Product Data**



Human peripheral blood lymphocytes were stained with anti-human CD56 (clone QA17A16) FITC and anti-human CD158h (KIR2DS1) (clone S22019F) PE (left) or mouse IgG1, κ PE isotype control (right).

For Research Use Only. Not for diagnostic or therapeutic use.

This product is supplied subject to the terms and conditions, including the limited license, located at [www.biolegend.com/terms](http://www.biolegend.com/terms) ("Terms") and may be used only as provided in the Terms. Without limiting the foregoing, BioLegend products may not be used for any Commercial Purpose as defined in the Terms, resold in any form, used in manufacturing, or reverse engineered, sequenced, or otherwise studied or used to learn its design or composition without express written approval of BioLegend. Regardless of the information given in this document, user is solely responsible for determining any license requirements necessary for user's intended use and assumes all risk and liability arising from use of the product. BioLegend is not responsible for patent infringement or any other risks or liabilities whatsoever resulting from the use of its products.

BioLegend, the BioLegend logo, and all other trademarks are property of BioLegend, Inc. or their respective owners, and all rights are reserved.

8999 BioLegend Way, San Diego, CA 92121 [www.biolegend.com](http://www.biolegend.com)  
 Toll-Free Phone: 1-877-Bio-Legend (246-5343) Phone: (858) 768-5800 Fax: (877) 455-9587