

PE anti-human CD158i (KIR2DS4) Antibody

Catalog# / Size	335107 / 25 tests 335108 / 100 tests
Clone	S22012A
Regulatory Status	RUO
Other Names	NKAT8, Killer Cell Immunoglobulin-Like Receptor 2DS4
Isotype	Mouse IgG1, κ
Description	<p>CD158 molecules, also known as KIRs (killer cell immunoglobulin-like receptors), are a family of transmembrane proteins that are expressed on specific subsets of NK and T cells. KIRs are characterized as having either two (KIR2D) or three (KIR3D) Ig-like extracellular domains. Some KIRs with long cytoplasmic domains contain ITIMs and possess inhibitory functions, while others with short cytoplasmic region lack ITIMs and have activating functions. Fifteen polymorphic KIR genes have been identified in humans, contributing to the extensive diversity of KIR phenotypes observed in individuals.</p> <p>CD158i is an activating receptor with two Ig-like domains and a short cytoplasmic region. KIR2DS4 is reported to bind to certain HLA-C molecules and HLA-A*11.</p>

Product Details

Verified Reactivity	Human
Antibody Type	Monoclonal
Host Species	Mouse
Immunogen	KIR2DS4-transfected cells
Formulation	Phosphate-buffered solution, pH 7.2, containing 0.09% sodium azide and BSA (origin USA)
Preparation	The antibody was purified by affinity chromatography and conjugated with PE under optimal conditions.
Concentration	Lot-specific (to obtain lot-specific concentration and expiration, please enter the lot number in our Certificate of Analysis online tool.)
Storage & Handling	The antibody solution should be stored undiluted between 2°C and 8°C, and protected from prolonged exposure to light. Do not freeze.
Application	FC - Quality tested
Recommended Usage	Each lot of this antibody is quality control tested by immunofluorescent staining with flow cytometric analysis . For flow cytometric staining, the suggested use of this reagent is 5 μ L per million cells in 100 μ L staining volume or 5 μ L per 100 μ L of whole blood. It is recommended that the reagent be titrated for optimal performance for each application.
Excitation Laser	Blue Laser (488 nm) Green Laser (532 nm)/Yellow-Green Laser (561 nm)
Application Notes	Based on in-house testing on different KIR-expressing transfectants, clone S22012A does not interact with other KIR protein family members.

Antigen Details

Structure	Two Ig-like extracellular domain glycoprotein
Distribution	Subset of NK cells, subset of T Cells

Function	NK cell regulation
Ligand/Receptor	HLA-C, HLA-A*11
Cell Type	Lymphocytes, NK cells, T cells
Biology Area	Cell Biology, Immunology, Innate Immunity
Molecular Family	CD Molecules

Antigen References

1. Bottino C, *et al.* 1996. *Eur J Immunol.* 26:1816-24.
2. Graef T, *et al.* 2009. *J Exp Med.* 206:2557-72.
3. Campbell KS, *et al.* 1998. *Eur J Immunol.* 28:599-609.

Gene ID [3809](#)

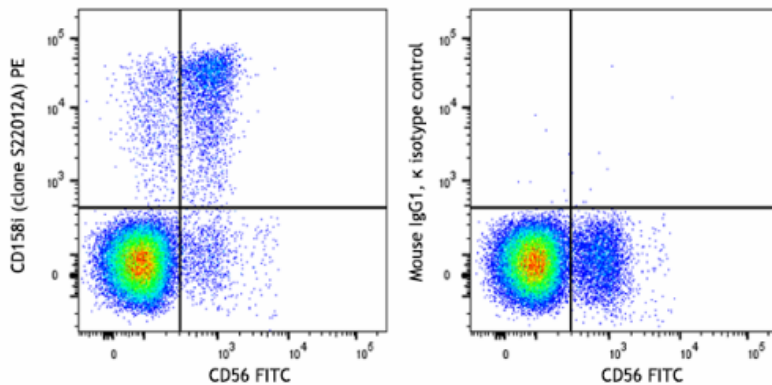
Related Protocols

- [Cell Surface Flow Cytometry Staining Protocol](#)

Other Formats

Purified anti-human CD158i (KIR2DS4), APC anti-human CD158i (KIR2DS4), PE anti-human CD158i (KIR2DS4), PE/Cyanine7 anti-human CD158i (KIR2DS4)

Product Data



Human peripheral blood lymphocytes were stained with anti-human CD56 (clone QA17A16) FITC and anti-human CD158i (KIR2DS4) (clone S22012A) PE (left) or mouse IgG1, κ PE isotype control (right).

For Research Use Only. Not for diagnostic or therapeutic use.

This product is supplied subject to the terms and conditions, including the limited license, located at www.biolegend.com/terms ("Terms") and may be used only as provided in the Terms. Without limiting the foregoing, BioLegend products may not be used for any Commercial Purpose as defined in the Terms, resold in any form, used in manufacturing, or reverse engineered, sequenced, or otherwise studied or used to learn its design or composition without express written approval of BioLegend. Regardless of the information given in this document, user is solely responsible for determining any license requirements necessary for user's intended use and assumes all risk and liability arising from use of the product. BioLegend is not responsible for patent infringement or any other risks or liabilities whatsoever resulting from the use of its products.

BioLegend, the BioLegend logo, and all other trademarks are property of BioLegend, Inc. or their respective owners, and all rights are reserved.

8999 BioLegend Way, San Diego, CA 92121 www.biolegend.com
 Toll-Free Phone: 1-877-Bio-Legend (246-5343) Phone: (858) 768-5800 Fax: (877) 455-9587