

## PE anti-human CD161 Recombinant Antibody

<b>Catalog# / Size</b>	379503 / 25 tests 379504 / 100 tests
<b>Clone</b>	QA20B14
<b>Regulatory Status</b>	RUO
<b>Other Names</b>	CD161
<b>Isotype</b>	Mouse IgG1, $\kappa$
<b>Description</b>	CD161, also known as NKR-P1A, is a type II transmembrane glycoprotein that is expressed as a 40-44 kD homodimer. It is a member of the C-type lectin superfamily. CD161 is expressed on a majority of NK cells, NKT cells, and subsets of peripheral T cells and CD3+ thymocytes. It has been reported that Th17 cells are a subpopulation of CD4+CD161+CCR6+ cells. While the biological function of CD161 is not clear, it has been suggested to serve either as a stimulatory receptor or to inhibit NK cell-mediated cytotoxicity and cytokine production. LLT-1 (lectin-like transcript-1), also known as osteoclast inhibitory lectin or CLEC2D, is the ligand of CD161.

### Product Details

---

<b>Verified Reactivity</b>	Human
<b>Antibody Type</b>	Recombinant
<b>Host Species</b>	Mouse
<b>Immunogen</b>	Human NK cells
<b>Formulation</b>	Phosphate-buffered solution, pH 7.2, containing 0.09% sodium azide and BSA (origin USA)
<b>Preparation</b>	The antibody was purified by affinity chromatography and conjugated with PE under optimal conditions.
<b>Concentration</b>	Lot-specific (to obtain lot-specific concentration and expiration, please enter the lot number in our <a href="#">Certificate of Analysis</a> online tool.)
<b>Storage &amp; Handling</b>	The antibody solution should be stored undiluted between 2°C and 8°C, and protected from prolonged exposure to light. <b>Do not freeze.</b>
<b>Application</b>	<a href="#">FC - Quality tested</a>
<b>Recommended Usage</b>	Each lot of this antibody is quality control tested by <a href="#">immunofluorescent staining with flow cytometric analysis</a> . For flow cytometric staining, the suggested use of this reagent is 5 $\mu$ L per million cells in 100 $\mu$ L staining volume or 5 $\mu$ L per 100 $\mu$ L of whole blood. It is recommended that the reagent be titrated for optimal performance for each application.
<b>Excitation Laser</b>	Blue Laser (488 nm) Green Laser (532 nm)/Yellow-Green Laser (561 nm)
<b>RRID</b>	AB_3683420 (BioLegend Cat. No. 379503) AB_3683420 (BioLegend Cat. No. 379504)

### Antigen Details

---

<b>Structure</b>	Type II glycoprotein, 40-44 kD homodimer, C-type lectin superfamily
<b>Distribution</b>	NK cells, T subset, subset of CD3+ thymocytes
<b>Ligand/Receptor</b>	LLT-1 (Lectin-like transcript-1)

**Cell Type** NK cells, T cells, Thymocytes  
**Biology Area** Cell Biology, Immunology, Innate Immunity, Signal Transduction  
**Molecular Family** CD Molecules

**Antigen References**

1. Takahashi T, *et al.* 2006. *J Immunol.* 176:211-6.
2. Cosmi L, *et al.* 2008. *J Exp Med.* 205:1903-16.
3. Aldemir H, *et al.* 2005. *J Immunol.* 175:7791-5.
4. Rosen DB, *et al.* 2008. *J Immunol.* 180:6508-17.

**Gene ID** [3820](#)

## Related Protocols

---

- [Cell Surface Flow Cytometry Staining Protocol](#)

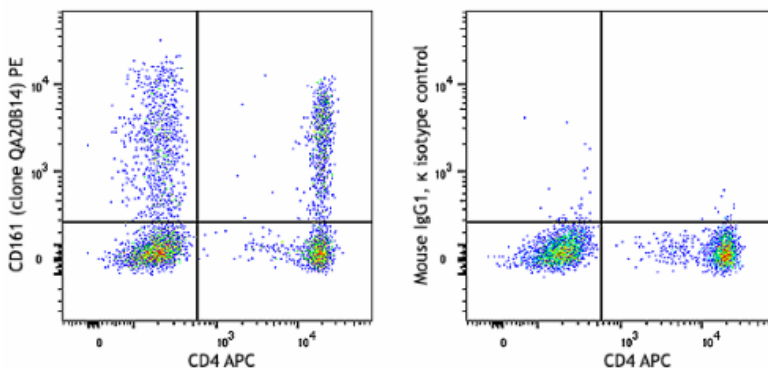
## Other Formats

---

Purified anti-human CD161 Recombinant Antibody, PE anti-human CD161 Recombinant Antibody

## Product Data

---



Human peripheral blood lymphocytes were stained with anti-human CD4 (clone RPA-T4) APC and anti-human CD161 recombinant (clone QA20B14) PE (left) or mouse IgG1, kappa PE isotype control (right).

For Research Use Only. Not for diagnostic or therapeutic use.

This product is supplied subject to the terms and conditions, including the limited license, located at [www.biolegend.com/terms](http://www.biolegend.com/terms) ("Terms") and may be used only as provided in the Terms. Without limiting the foregoing, BioLegend products may not be used for any Commercial Purpose as defined in the Terms, resold in any form, used in manufacturing, or reverse engineered, sequenced, or otherwise studied or used to learn its design or composition without express written approval of BioLegend. Regardless of the information given in this document, user is solely responsible for determining any license requirements necessary for user's intended use and assumes all risk and liability arising from use of the product. BioLegend is not responsible for patent infringement or any other risks or liabilities whatsoever resulting from the use of its products.

BioLegend, the BioLegend logo, and all other trademarks are property of BioLegend, Inc. or their respective owners, and all rights are reserved.

8999 BioLegend Way, San Diego, CA 92121 [www.biolegend.com](http://www.biolegend.com)  
Toll-Free Phone: 1-877-Bio-Legend (246-5343) Phone: (858) 768-5800 Fax: (877) 455-9587