

PE anti-human CD26 Antibody

Catalog# / Size	335307 / 25 tests 335308 / 100 tests
Clone	5-109
Regulatory Status	RUO
Other Names	ADA-binding protein, DPP IV ectoenzyme, EC 3.4.14.5, DPP4
Isotype	Mouse IgG1, κ
Description	CD26, also known as ADA-binding protein and dipeptidyl peptidase IV (DPP-IV), is a 110 kD type II membrane protein. It is a member of the peptidase and ectoenzyme family. CD26 is expressed on the membrane of mature thymocytes, T lymphocytes (upregulated upon activation), B cells, NK cells, and macrophages. CD26 cleaves off N-terminal X-Pro and X-Ala dipeptides from polypeptides. It plays an integral role as a costimulatory molecule in T cell activation. CD26 may interact with extracellular matrix proteins such as fibronectin or collagen, CD45, and ADA.

Product Details

Verified Reactivity	Human
Antibody Type	Monoclonal
Host Species	Mouse
Formulation	Phosphate-buffered solution, pH 7.2, containing 0.09% sodium azide and BSA (origin USA)
Preparation	The antibody was purified by affinity chromatography and conjugated with PE under optimal conditions.
Concentration	Lot-specific (to obtain lot-specific concentration and expiration, please enter the lot number in our Certificate of Analysis online tool.)
Storage & Handling	The antibody solution should be stored undiluted between 2°C and 8°C, and protected from prolonged exposure to light. Do not freeze.
Application	FC - Quality tested
Recommended Usage	Each lot of this antibody is quality control tested by immunofluorescent staining with flow cytometric analysis . For flow cytometric staining, the suggested use of this reagent is 5 μ L per million cells in 100 μ L staining volume or 5 μ L per 100 μ L of whole blood. It is recommended that the reagent be titrated for optimal performance for each application.
Excitation Laser	Blue Laser (488 nm) Green Laser (532 nm)/Yellow-Green Laser (561 nm)
Application Notes	Test clone 5-109 and reference clone BA5b completely cross-block the staining on target cells.
RRID	AB_3662229 (BioLegend Cat. No. 335307) AB_3662229 (BioLegend Cat. No. 335308)

Antigen Details

Structure	Peptidases and ectoenzyme families, type II glycoprotein, 110 kD
Distribution	Thymocyte subset, memory T cells, B cells, NK cells, epithelial cells, macrophages
Function	Dipeptidyl peptidase, T cell costimulation, HIV entry

Ligand/Receptor	Adenosine-deaminase, collagen
Cell Type	B cells, Epithelial cells, Macrophages, NK cells, T cells, Thymocytes
Biology Area	Costimulatory Molecules, Immunology
Molecular Family	CD Molecules
Antigen References	<ol style="list-style-type: none"> 1. Kameoka J, <i>et al.</i> 1993. <i>Science</i>. 261:466-9. 2. Dang NH, <i>et al.</i> 1990. <i>J Exp Med</i>. 172:649-52.

Gene ID [1803](#)

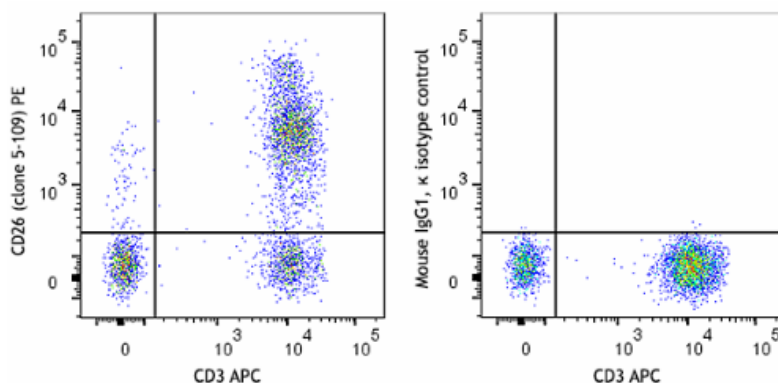
Related Protocols

- [Cell Surface Flow Cytometry Staining Protocol](#)

Other Formats

Purified anti-human CD26, PE anti-human CD26

Product Data



Human peripheral blood lymphocytes were stained with anti-human CD3 (clone UCHT1) APC and anti-human CD26 (clone 5-109) PE (left) or mouse IgG1, κ PE isotype control (right).

For Research Use Only. Not for diagnostic or therapeutic use.

This product is supplied subject to the terms and conditions, including the limited license, located at www.biolegend.com/terms ("Terms") and may be used only as provided in the Terms. Without limiting the foregoing, BioLegend products may not be used for any Commercial Purpose as defined in the Terms, resold in any form, used in manufacturing, or reverse engineered, sequenced, or otherwise studied or used to learn its design or composition without express written approval of BioLegend. Regardless of the information given in this document, user is solely responsible for determining any license requirements necessary for user's intended use and assumes all risk and liability arising from use of the product. BioLegend is not responsible for patent infringement or any other risks or liabilities whatsoever resulting from the use of its products.

BioLegend, the BioLegend logo, and all other trademarks are property of BioLegend, Inc. or their respective owners, and all rights are reserved.

8999 BioLegend Way, San Diego, CA 92121 www.biolegend.com
Toll-Free Phone: 1-877-Bio-Legend (246-5343) Phone: (858) 768-5800 Fax: (877) 455-9587