

PE anti-human IDO1 Antibody

Catalog# / Size	335853 / 25 tests 335854 / 100 tests
Clone	W20099D
Regulatory Status	RUO
Other Names	Indolamine 2,3-dioxygenase, Indole 2,3-dioxygenase, Indoleamine-pyrrole 2,3-dioxygenase
Isotype	Rat IgG2b, λ
Description	IDO1 is also known as Indolamine 2,3-dioxygenase, Indole 2,3-dioxygenase, and Indoleamine-pyrrole 2,3-dioxygenase. IDO1 is a ubiquitously expressed cytoplasmic protein with a predicted molecular weight of approximately 45 kD. It is one of the best known IFN- γ inducible genes. The product of IDO gene catalyzes the degradation of the essential amino acid L-tryptophan to N-formylkynurenine. IDO has been implicated to protect against intracellular and extracellular pathogens. It also has been shown to maintain the special immune suppressive status of immune-privileged sites such as the brain, eyes, kidney, and placenta.

Product Details

Verified Reactivity	Human
Antibody Type	Monoclonal
Host Species	Rat
Immunogen	Recombinant protein, full length human IDO
Formulation	Phosphate-buffered solution, pH 7.2, containing 0.09% sodium azide and BSA (origin USA)
Preparation	The antibody was purified by affinity chromatography and conjugated with PE under optimal conditions.
Concentration	Lot-specific (to obtain lot-specific concentration and expiration, please enter the lot number in our Certificate of Analysis online tool.)
Storage & Handling	The antibody solution should be stored undiluted between 2°C and 8°C, and protected from prolonged exposure to light. Do not freeze.
Application	ICFC - Quality tested
Recommended Usage	Each lot of this antibody is quality control tested by intracellular immunofluorescent staining with flow cytometric analysis . For flow cytometric staining, the suggested use of this reagent is 5 μ L per million cells in 100 μ L staining volume or 5 μ L per 100 μ L of whole blood. It is recommended that the reagent be titrated for optimal performance for each application.
Excitation Laser	Blue Laser (488 nm) Green Laser (532 nm)/Yellow-Green Laser (561 nm)
RRID	AB_3662230 (BioLegend Cat. No. 335853) AB_3662230 (BioLegend Cat. No. 335854)

Antigen Details

Structure	Heme-containing enzyme of 403 amino acids with a predicted molecular weight of 45 kD.
Distribution	Cytoplasm
Function	Dioxygenase, Oxidoreductase

Ligand/Receptor	Heme, Iron, Metal binding
Cell Type	Dendritic cells, Eosinophils, Langerhans cells, Macrophages, Schwann Cells, T cells
Biology Area	Immuno-Oncology, Immunology, Inhibitory Molecules
Molecular Family	Enzymes and Regulators

Antigen References

1. Yamazaki F, *et al.* 1985. *The Biochemical Journal*. 230: 635–8.
2. Prendergast GC, *et al.* 2014. *Frontiers in Immunology*. 5:585.
3. Habara-Ohkubo A, *et al.* 1991. *Gene*. 105:221.
4. Munn DH, *et al.* 2002. *Science*. 297:1867.
5. Frumento G, *et al.* 2002. *J Exp Med*. 196:459.
6. Muller AJ, *et al.* 2005. *Nature Med*. 11:312.
7. Löb S, *et al.* 2009. *Nature Rev Cancer*. 9:445-52.

Gene ID [15930](#)

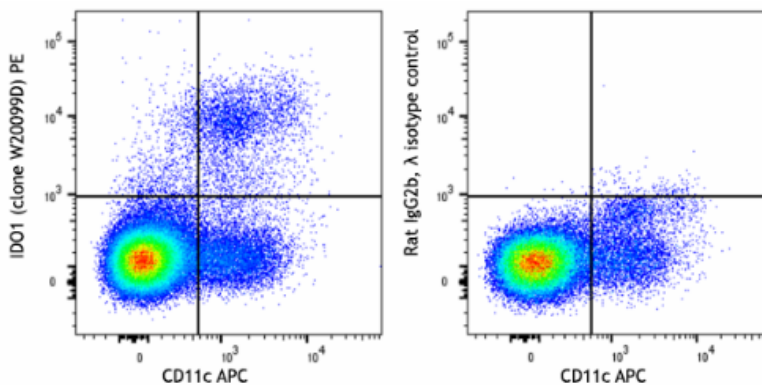
Related Protocols

- [Intracellular Flow Cytometry Staining Protocol](#)

Other Formats

PE anti-human IDO1

Product Data



LPS stimulated (24 hours) human peripheral blood mononuclear cells were surface stained with anti-human CD11c (clone Bu15) APC. Cells were then fixed, permeabilized, and intracellularly stained with anti-human IDO1 (clone W20099D) PE (left), or rat IgG2b, λ PE isotype control (right).

For Research Use Only. Not for diagnostic or therapeutic use.

This product is supplied subject to the terms and conditions, including the limited license, located at www.biolegend.com/terms ("Terms") and may be used only as provided in the Terms. Without limiting the foregoing, BioLegend products may not be used for any Commercial Purpose as defined in the Terms, resold in any form, used in manufacturing, or reverse engineered, sequenced, or otherwise studied or used to learn its design or composition without express written approval of BioLegend. Regardless of the information given in this document, user is solely responsible for determining any license requirements necessary for user's intended use and assumes all risk and liability arising from use of the product. BioLegend is not responsible for patent infringement or any other risks or liabilities whatsoever resulting from the use of its products.

BioLegend, the BioLegend logo, and all other trademarks are property of BioLegend, Inc. or their respective owners, and all rights are reserved.

8999 BioLegend Way, San Diego, CA 92121 www.biolegend.com
Toll-Free Phone: 1-877-Bio-Legend (246-5343) Phone: (858) 768-5800 Fax: (877) 455-9587