

PE anti-mouse CCL17 (TARC) Antibody

Catalog# / Size	167203 / 25 µg 167204 / 100 µg
Clone	A20096A
Regulatory Status	RUO
Other Names	CC chemokine TARC, C-C motif chemokine 17, CCL17, chemokine (C-C motif) ligand 17, small inducible cytokine subfamily A (Cys-Cys), member 17, Small-inducible cytokine A17, T cell-directed CC chemokine, TARC, Thymus and activation-regulated chemokine
Isotype	Rat IgG2b, κ
Description	CC chemokine ligand 17 (CCL17), also known as Thymus and Activation-Regulated Chemokine (TARC), was initially identified as a T cell chemokine expressed constitutively in the thymus and by PBMCs upon activation. CCL17 has since been found to be secreted by a variety of cell types and elevated in multiple inflammatory and autoimmune conditions. CCL17-mediated recruitment of Th2 and CLA ⁺ CD4 ⁺ T cells plays a key role in allergic diseases such as atopic dermatitis, allergic asthma, allergic rhinitis, and allergic contact dermatitis. In addition, CCL17 is significantly elevated in cases of idiopathic pulmonary fibrosis. CCL17 ⁺ DCs accumulate in atherosclerotic lesions where they are thought to limit Treg expansion. DC-derived CCL17 along with CCL22 is also implicated in the recruitment of Tregs to inflammatory sites in chronic hepatitis. CCL17 is upregulated by TNFα, IL-4, and IFNγ in bronchial epithelial cells, TGFβ1, TNFα, and IFNγ in a human keratinocyte cell line, and histamine and prostaglandin E2P in immature DCs.

Product Details

Verified Reactivity	Mouse
Antibody Type	Monoclonal
Host Species	Rat
Immunogen	Mouse Recombinant CCL17 (aa24-93)
Formulation	Phosphate-buffered solution, pH 7.2, containing 0.09% sodium azide
Preparation	The antibody was purified by affinity chromatography and conjugated with PE under optimal conditions.
Concentration	0.2 mg/mL
Storage & Handling	The antibody solution should be stored undiluted between 2°C and 8°C, and protected from prolonged exposure to light. Do not freeze.
Application	ICFC – Quality tested
Recommended Usage	Each lot of this antibody is quality control tested by intracellular immunofluorescent staining with flow cytometric analysis . For flow cytometric staining using our Cyto-Fast™ Fix/Perm Buffer Set, the suggested use of this reagent is ≤ 0.125 µg per million cells in 100 µL volume. It is recommended that the reagent be titrated for optimal performance for each application.
Excitation Laser	Blue Laser (488 nm) Green Laser (532 nm)/Yellow-Green Laser (561 nm)
RRID	AB_3683193 (BioLegend Cat. No. 167203) AB_3683193 (BioLegend Cat. No. 167204)

Antigen Details

Structure	Chemokine
Distribution	Upon activation, CCL17 is expressed by PBMCs, monocytes, dendritic cells, bronchial epithelial cells, smooth muscle cells, keratinocytes, and fibroblasts.
Function	CCL17 chemoattracts T cells, Th2 cells, and CLA+ CD4+ T cells. It plays a major role in allergic diseases. CCL17 can be upregulated by IL-4 in T cells and by a combination of cytokines in different cells.
Interaction	T cells, Th2 cells, CLA+ CD4 T cells, T (reg) cells, NK cells, NKT cells, and macrophages
Ligand/Receptor	CCR4 (CD194)
Cell Type	Dendritic cells, Epithelial cells, Fibroblasts, Monocytes
Biology Area	Cell Biology, Signal Transduction
Molecular Family	Cytokines/Chemokines

Antigen References

1. Imai T, *et al.* 1997. *J. Biol. Chem.* 272:15036.
2. Mcllroy A, *et al.* 2006. *Immunology* 117:507.
3. Yogo Y, *et al.* 2009. *Respir. Res.* 10:80.
4. Stutte S, *et al.* 2010. *P. Natl. Acad. Sci USA* 107:8736.
5. Oo YH, *et al.* 2010. *J. Immunol.* 184:2886.
6. Weber C, *et al.* 2011. *J. Clin. Invest.* 121:2898

Gene ID [383](#)

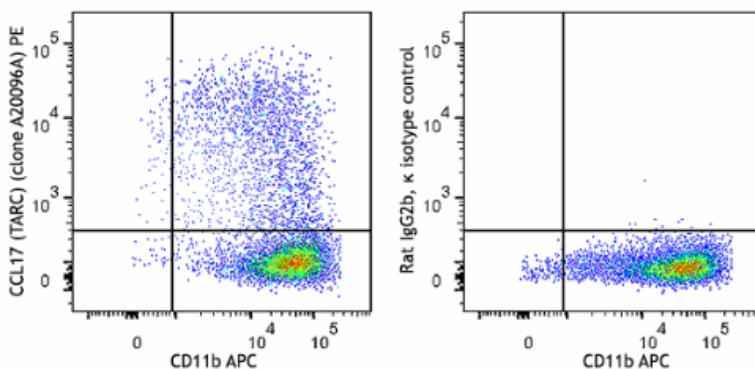
Related Protocols

- [Intracellular Flow Cytometry Staining Protocol](#)

Other Formats

PE anti-mouse CCL17 (TARC) , Purified anti-mouse CCL17 (TARC) Antibody

Product Data



GM-CSF generated bone marrow derived dendritic cells (BMDCs) were treated with 1X Monensin (Cat. No. 420701) 16-24 hours and surface stained with anti-mouse/human CD11b (clone M1/70) APC. Cells were then fixed and permeabilized with Cyto-Fast™ Fix/Perm Buffer (Cat. No. 426803) and intracellularly stained with anti-mouse CCL17 (TARC) (clone A20096A) PE (left) or rat IgG2b, κ PE isotype control (right).

For Research Use Only. Not for diagnostic or therapeutic use.

This product is supplied subject to the terms and conditions, including the limited license, located at www.biolegend.com/terms ("Terms") and may be used only as provided in the Terms. Without limiting the foregoing, BioLegend products may not be used for any Commercial Purpose as defined in the Terms, resold in any form, used in manufacturing, or reverse engineered, sequenced, or otherwise studied or used to learn its design or composition without express written approval of BioLegend. Regardless of the information given in this document, user is solely responsible for determining any license requirements necessary for user's intended use and assumes all risk and liability arising from use of the product. BioLegend is not responsible for patent infringement or any other risks or liabilities whatsoever resulting from the use of its products.

BioLegend, the BioLegend logo, and all other trademarks are property of BioLegend, Inc. or their respective owners, and all rights are reserved.

8999 BioLegend Way, San Diego, CA 92121 www.biolegend.com
 Toll-Free Phone: 1-877-Bio-Legend (246-5343) Phone: (858) 768-5800 Fax: (877) 455-9587