

PE anti-mouse CCL22 Antibody

Catalog# / Size	167403 / 25 µg 167404 / 100 µg
Clone	W20220C
Regulatory Status	RUO
Other Names	Macrophage derived cytokine (MDC), Small inducible cytokine subfamily A, member 22 (Scya22), stimulated T cell chemotactic protein (STCP-1), activated B cell-derived chemokine-1 (ABCD-1) DC, B cell-derived chemokine (DC/B-CK)
Isotype	Mouse IgG2b, κ
Description	<p>CCL22, also known as macrophage-derived chemokine (MDC), is a conventional CC chemokine that is expressed constitutively under homeostatic conditions and can be induced in several cell types upon activation.</p> <p>Mouse CCL22 is expressed at high levels in dendritic cells and activated B lymphocytes. Low levels of mouse MDC mRNA is also detectable in lung, unstimulated spleen cells, lymph node cells, and in thymocytes. Constitutive expression of CCL22 is mediated by T cell–derived GM-CSF.</p> <p>The only known receptor for CCL22 is CCR4, which is mainly expressed by activated Th2-biased CD4+ T cells and by regulatory T cells. CCL22 displays chemotactic activity for natural killer cells, chronically activated T lymphocytes, monocytes, and dendritic cells, and may play a role in recruiting activated T lymphocytes to inflammatory sites and other aspects of activated T lymphocyte physiology.</p>

Product Details

Verified Reactivity	Mouse
Antibody Type	Monoclonal
Host Species	Mouse
Immunogen	Recombinant mouse CCL22 (aa25-92)
Formulation	Phosphate-buffered solution, pH 7.2, containing 0.09% sodium azide
Preparation	The antibody was purified by affinity chromatography and conjugated with PE under optimal conditions.
Concentration	0.2 mg/mL
Storage & Handling	The antibody solution should be stored undiluted between 2°C and 8°C, and protected from prolonged exposure to light. Do not freeze.
Application	ICFC - Quality tested
Recommended Usage	Each lot of this antibody is quality control tested by intracellular immunofluorescent staining with flow cytometric analysis . For flow cytometric staining, the suggested use of this reagent is ≤ 0.125 µg per million cells in 100 µL volume. It is recommended that the reagent be titrated for optimal performance for each application.
Excitation Laser	Blue Laser (488 nm) Green Laser (532 nm)/Yellow-Green Laser (561 nm)
RRID	AB_3698940 (BioLegend Cat. No. 167403) AB_3698940 (BioLegend Cat. No. 167404)

Antigen Details

Structure	Chemokine
Distribution	Macrophages, NK cells, thymic epithelial cells and intestinal epithelial cells
Function	CCL22 induces the migration of CCR4 + Th2 cells, Tregs, DC, and NK cells. It is induced by LPS and CD40 antibody in macrophages. It is upregulated by Th2 cytokines (IL-4 and IL-5) and downregulated by Th1 cytokines (IFN γ).
Interaction	Dendritic cells, NK cells, Th2 cells, T regs, CLA+ skin-homing memory/effector T cells
Ligand/Receptor	CCR4
Biology Area	Cell Biology, Signal Transduction
Molecular Family	Cytokines/Chemokines

Antigen References

1. Kanazawa N, *et al.* 1999. *Eur. J. Immunol.* 29: 1925–32
2. Schaniel C, *et al.* 1998. *J. Exp. Med.* 188:451.
3. Andrew DP, *et al.* 1998. *J. Immunol.* 161:5027–38
4. Ghadially H, *et al.* 2005. *J Immunol* 174(9): 5620–29
5. Godiska R, *et al.* 1997. *J. Exp. Med.* 185:1595.
6. Chang, M-S. *et al.* 1997. *J. Biol. Chem.* 272:25229
7. Piseddu I, *et al.* 2020. *J Immunol* 205(8): 2056–65.

Gene ID [20295](#)

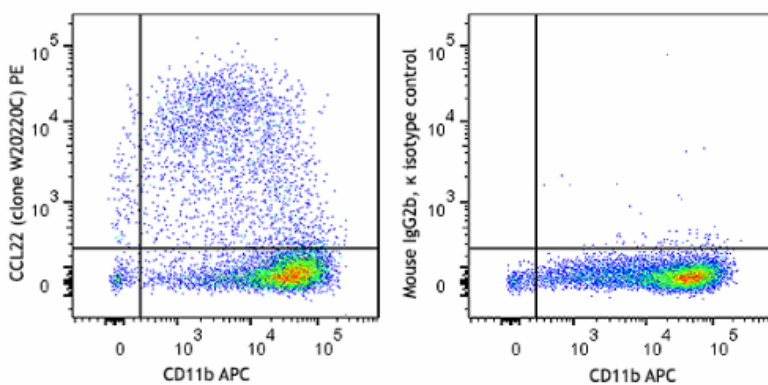
Related Protocols

- [Intracellular Flow Cytometry Staining Protocol](#)

Other Formats

PE anti-mouse CCL22, Purified anti-mouse CCL22

Product Data



GM-CSF generated bone marrow-derived dendritic cells (BMDCs) were treated with 1X Monensin (Cat. No. 420701) for 16-24 hours and surface stained with anti-mouse/human CD11b (clone M1/70) APC. Cells were then fixed and permeabilized with Cyto-Fast™ Fix/Perm Buffer (Cat. 426803) and intracellularly stained with anti-mouse CCL22 (MDC) (clone W20220C) PE (left) or mouse IgG2b, κ PE isotype control (right).

For Research Use Only. Not for diagnostic or therapeutic use.

This product is supplied subject to the terms and conditions, including the limited license, located at www.biolegend.com/terms ("Terms") and may be used only as provided in the Terms. Without limiting the foregoing, BioLegend products may not be used for any Commercial Purpose as defined in the Terms, resold in any form, used in manufacturing, or reverse engineered, sequenced, or otherwise studied or used to learn its design or composition without express written approval of BioLegend. Regardless of the information given in this document, user is solely responsible for determining any license requirements necessary for user's intended use and assumes all risk and liability arising from use of the product. BioLegend is not responsible for patent infringement or any other risks or liabilities whatsoever resulting from the use of its products.

BioLegend, the BioLegend logo, and all other trademarks are property of BioLegend, Inc. or their respective owners, and all rights are reserved.

8999 BioLegend Way, San Diego, CA 92121 www.biolegend.com
 Toll-Free Phone: 1-877-Bio-Legend (246-5343) Phone: (858) 768-5800 Fax: (877) 455-9587