

PE anti-mouse Ly-6C Antibody

Catalog# / Size	168103 / 25 µg 168104 / 100 µg
Clone	S22006A
Regulatory Status	RUO
Other Names	Lymphocyte antigen 6 complex, locus C
Isotype	Rat IgG1, κ
Description	Most hematopoietic cells express one or more members of Ly-6 family. The expression of Ly-6 varies with development stage and activation. Ly-6C is a 14-17 kD GPI-linked surface protein expressed on mouse monocyte/macrophage cells, endothelial cells, neutrophils, and some T cell subsets. Ly-6C is reported to be an indicator of memory CD8 ⁺ T cells.

Product Details

Verified Reactivity	Mouse
Antibody Type	Monoclonal
Host Species	Rat
Immunogen	Ly6C-transfected cells
Formulation	Phosphate-buffered solution, pH 7.2, containing 0.09% sodium azide
Preparation	The antibody was purified by affinity chromatography and conjugated with PE under optimal conditions.
Concentration	0.2 mg/mL
Storage & Handling	The antibody solution should be stored undiluted between 2°C and 8°C, and protected from prolonged exposure to light. Do not freeze.
Application	FC - Quality tested
Recommended Usage	Each lot of this antibody is quality control tested by immunofluorescent staining with flow cytometric analysis . For flow cytometric staining, the suggested use of this reagent is ≤ 0.5 µg per million cells in 100 µL volume. It is recommended that the reagent be titrated for optimal performance for each application.
Excitation Laser	Blue Laser (488 nm) Green Laser (532 nm)/Yellow-Green Laser (561 nm)
Application Notes	Reference clone HK1.4 does not block the staining of clone S22006A.
RRID	AB_3698943 (BioLegend Cat. No. 168103) AB_3698943 (BioLegend Cat. No. 168104)

Antigen Details

Structure	14-17 kD protein (134 amino acids), member of the Ly-6 family of GPI linked protein. Ly6 family members share structure homology throughout a distinctive cysteine rich protein domain that incorporates O-linked carbohydrates.
Distribution	Ly-6C is expressed primarily on bone marrow myeloid populations, monocytes/macrophages, neutrophils, endothelial cells, and some T cell subsets. Ly-6C is also a marker of memory CD8 ⁺ T cells.

Function	After cross linking Ly6C regulate endothelial adhesion of CD8 T cells through activation of LFA-1 at the expense of Ly6C down-regulation on the cell surface
Interaction	Endothelial cells, Macrophages, Monocytes, Neutrophils, T cells
Cell Type	Endothelial cells, Macrophages, Monocytes, Neutrophils, T cells
Biology Area	Immunology
Molecular Family	CD Molecules
Antigen References	<ol style="list-style-type: none"> 1. Jutila MA, <i>et al.</i> 1988. <i>Eur J Immunol.</i> 18:1819-26. 2. Cerwenka A, <i>et al.</i> 1998. <i>J Immunol.</i> 161:97-105.
Gene ID	17067

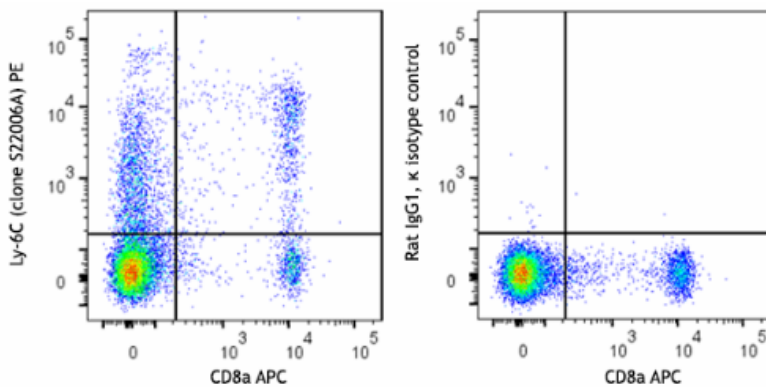
Related Protocols

- [Cell Surface Flow Cytometry Staining Protocol](#)

Other Formats

PE anti-mouse Ly-6C, Purified anti-mouse Ly-6C

Product Data



C57BL/6 mouse splenocytes were stained with anti-mouse CD8a (clone S18018E) APC and anti-mouse Ly-6C (clone S22006A) PE (left) or rat IgG1, κ PE isotype control (right).

For Research Use Only. Not for diagnostic or therapeutic use.

This product is supplied subject to the terms and conditions, including the limited license, located at www.biolegend.com/terms ("Terms") and may be used only as provided in the Terms. Without limiting the foregoing, BioLegend products may not be used for any Commercial Purpose as defined in the Terms, resold in any form, used in manufacturing, or reverse engineered, sequenced, or otherwise studied or used to learn its design or composition without express written approval of BioLegend. Regardless of the information given in this document, user is solely responsible for determining any license requirements necessary for user's intended use and assumes all risk and liability arising from use of the product. BioLegend is not responsible for patent infringement or any other risks or liabilities whatsoever resulting from the use of its products.

BioLegend, the BioLegend logo, and all other trademarks are property of BioLegend, Inc. or their respective owners, and all rights are reserved.

8999 BioLegend Way, San Diego, CA 92121 www.biolegend.com
Toll-Free Phone: 1-877-Bio-Legend (246-5343) Phone: (858) 768-5800 Fax: (877) 455-9587