

PE/Cyanine7 anti-human CD158e1 (KIR3DL1, NKB1) Antibody

Catalog# / Size	389507 / 25 tests 389508 / 100 tests
Clone	S22024B
Regulatory Status	RUO
Other Names	CD158e, Killer Cell Immunoglobulin-Like Receptor 3DL1, NKAT3, NKB1
Isotype	Mouse IgG1, κ
Description	CD158 molecules, also known as KIRs (killer cell immunoglobulin-like receptors), are a family of transmembrane proteins with either two (KIR2D) or three (KIR3D) Ig-like extracellular domains. Some KIRs with long cytoplasmic domains contain ITIMs and possess inhibitory functions and others with short cytoplasmic region lack ITIM and have activation functions. Fifteen polymorphic KIR genes have been reported in humans. CD158e is a 50 kD three extracellular Ig domain glycoprotein that displays a long cytoplasmic tail with two ITIM motifs. It is expressed primarily on a subset of NK cells and a subset of T cells. KIR3DL1 has been reported to bind to a number of different MHC class molecules that contain the HLA Bw4 epitope and CD8aa.

Product Details

Verified Reactivity	Human
Antibody Type	Monoclonal
Host Species	Mouse
Immunogen	KIR3DL1-transfected cells
Formulation	Phosphate-buffered solution, pH 7.2, containing 0.09% sodium azide and BSA (origin USA)
Preparation	The antibody was purified by affinity chromatography and conjugated with PE/Cyanine7 under optimal conditions.
Concentration	Lot-specific (to obtain lot-specific concentration and expiration, please enter the lot number in our Certificate of Analysis online tool.)
Storage & Handling	The antibody solution should be stored undiluted between 2°C and 8°C, and protected from prolonged exposure to light. Do not freeze.
Application	FC - Quality tested
Recommended Usage	Each lot of this antibody is quality control tested by immunofluorescent staining with flow cytometric analysis . For flow cytometric staining, the suggested use of this reagent is 5 μ L per million cells in 100 μ L staining volume or 5 μ L per 100 μ L of whole blood. It is recommended that the reagent be titrated for optimal performance for each application.
Excitation Laser	Blue Laser (488 nm) Green Laser (532 nm)/Yellow-Green Laser (561 nm)
Application Notes	Clone S22024B does not block the binding of clone DX9 on target cells. Based on in-house testing on different KIR-expressing transfectants, clone S22024B does not interact with other KIR protein family members, including CD158e2.
RRID	AB_3683443 (BioLegend Cat. No. 389507) AB_3683443 (BioLegend Cat. No. 389508)

Antigen Details

Structure	50 kD three Ig-like extracellular domain glycoprotein
Distribution	Subset of NK cells, subset of T Cells
Function	NK Cell regulation
Ligand/Receptor	MHC Class 1 molecules
Cell Type	Lymphocytes, NK cells, T cells
Biology Area	Cell Biology, Immunology, Innate Immunity
Molecular Family	CD Molecules
Antigen References	<ol style="list-style-type: none"> 1. Lanier LL, 2005. <i>Annu Rev Immunol.</i> 23:225-74. 2. Middleton D, et al. 2010. <i>Immunol.</i> 123:8. 3. Khakoo SI, et al. 2002. <i>J Exp Med.</i> 196:911-21.
Gene ID	3811

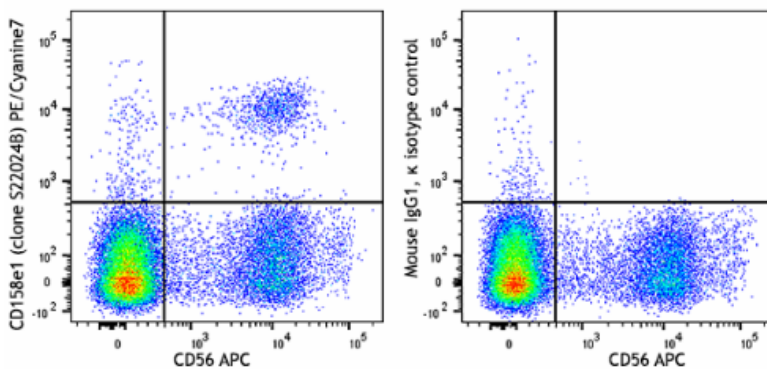
Related Protocols

- [Cell Surface Flow Cytometry Staining Protocol](#)

Other Formats

Purified anti-human CD158e1 (KIR3DL1, NKB1), APC anti-human CD158e1 (KIR3DL1, NKB1) Antibody, PE anti-human CD158e1 (KIR3DL1, NKB1) Antibody, PE/Cyanine7 anti-human CD158e1 (KIR3DL1, NKB1) Antibody, APC/Fire™ 750 anti-human CD158e1 (KIR3DL1, NKB1) Antibody

Product Data



Human peripheral blood lymphocytes were stained with anti-human CD56 (clone QA17A16) APC and anti-human CD158e1 (KIR3DL1, NKB1) (clone S22024B) PE/Cyanine7 (left) or mouse IgG1, κ PE/Cyanine7 isotype control (right).

For Research Use Only. Not for diagnostic or therapeutic use.

This product is supplied subject to the terms and conditions, including the limited license, located at www.biolegend.com/terms ("Terms") and may be used only as provided in the Terms. Without limiting the foregoing, BioLegend products may not be used for any Commercial Purpose as defined in the Terms, resold in any form, used in manufacturing, or reverse engineered, sequenced, or otherwise studied or used to learn its design or composition without express written approval of BioLegend. Regardless of the information given in this document, user is solely responsible for determining any license requirements necessary for user's intended use and assumes all risk and liability arising from use of the product. BioLegend is not responsible for patent infringement or any other risks or liabilities whatsoever resulting from the use of its products.

BioLegend, the BioLegend logo, and all other trademarks are property of BioLegend, Inc. or their respective owners, and all rights are reserved.

8999 BioLegend Way, San Diego, CA 92121 www.biolegend.com
Toll-Free Phone: 1-877-Bio-Legend (246-5343) Phone: (858) 768-5800 Fax: (877) 455-9587