

PE/Cyanine7 anti-human CD56 (NCAM) Antibody

Catalog# / Size	343755 / 25 tests 343756 / 100 tests
Clone	W22097A
Regulatory Status	RUO
Other Names	Leu-19, NKH1, NCAM-1
Isotype	Rat IgG2a, κ
Description	CD56, also known as NCAM (neural cell adhesion molecule), Leu-19, or NKH1, is a single transmembrane glycoprotein. It is a member of the Ig superfamily. The 140 kD isoform is expressed on NK and NKT cells. CD56 is also expressed in the brain (cerebellum and cortex) and at neuromuscular junctions. Certain large granular lymphocyte (LGL) leukemias, small-cell lung carcinomas, neuronal derived tumors, myelomas, and myeloid leukemias also express CD56. CD56 plays a role in homophilic and heterophilic adhesion via binding to itself or heparan sulfate.

Product Details

Verified Reactivity	Human
Antibody Type	Monoclonal
Host Species	Rat
Immunogen	Mammalian-derived recombinant protein aa 20-718
Formulation	Phosphate-buffered solution, pH 7.2, containing 0.09% sodium azide and BSA (origin USA)
Preparation	The antibody was purified by affinity chromatography and conjugated with PE/Cyanine7 under optimal conditions.
Concentration	Lot-specific (to obtain lot-specific concentration and expiration, please enter the lot number in our Certificate of Analysis online tool.)
Storage & Handling	The antibody solution should be stored undiluted between 2°C and 8°C, and protected from prolonged exposure to light. Do not freeze.
Application	FC - Quality tested
Recommended Usage	Each lot of this antibody is quality control tested by immunofluorescent staining with flow cytometric analysis . For flow cytometric staining, the suggested use of this reagent is 5 μ L per million cells in 100 μ L staining volume or 5 μ L per 100 μ L of whole blood. It is recommended that the reagent be titrated for optimal performance for each application.
Excitation Laser	Blue Laser (488 nm) Green Laser (532 nm)/Yellow-Green Laser (561 nm)
Application Notes	Flow cytometry testing showed that clone W22097A can block the binding of clone HCD56 and W22098E on target cells. Flow cytometry testing showed that clone W22097A does not affect the binding of clone MEM-188, 5.1H11 and W22098A on target cells.
RRID	AB_3675063 (BioLegend Cat. No. 343755) AB_3675063 (BioLegend Cat. No. 343756)

Antigen Details

Structure	Ig superfamily, single transmembrane or GPI-anchored glycoprotein
Distribution	NK cells, T subset, neural tissue, some LGL and myeloid leukemias
Function	Adhesion
Ligand/Receptor	Heparan sulfate
Cell Type	Leukemia, Neurons, NK cells, NKT cells
Biology Area	Cell Adhesion, Cell Biology, Costimulatory Molecules, Immunology
Molecular Family	Adhesion Molecules, CD Molecules
Antigen References	<ol style="list-style-type: none"> 1. Lanier L, <i>et al.</i> 1991. <i>J Immunol.</i> 146:4421-6. 2. Hemperly J, <i>et al.</i> 1990. <i>J Mol Neurosci.</i> 2:71-8. 3. Cremer H, <i>et al.</i> 1994. <i>Nature.</i> 367:455-9.
Gene ID	4684

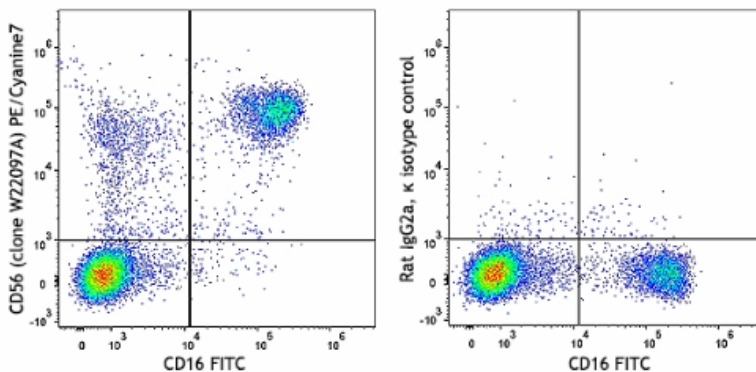
Related Protocols

- [Cell Surface Flow Cytometry Staining Protocol](#)

Other Formats

Purified anti-human CD56 (NCAM), PE anti-human CD56 (NCAM), PE/Cyanine7 anti-human CD56 (NCAM), APC anti-human CD56 (NCAM) Antibody, Brilliant Violet 421™ anti-human CD56 (NCAM), Brilliant Violet 605™ anti-human CD56 (NCAM)

Product Data



Human peripheral blood lymphocytes were stained with anti-human CD16 (clone 3G8) FITC and anti-human CD56 (NCAM) (clone W22097A) PE/Cyanine7 (left) or rat IgG2a, κ PE/Cyanine7 isotype control (right).

For Research Use Only. Not for diagnostic or therapeutic use.

This product is supplied subject to the terms and conditions, including the limited license, located at www.biolegend.com/terms ("Terms") and may be used only as provided in the Terms. Without limiting the foregoing, BioLegend products may not be used for any Commercial Purpose as defined in the Terms, resold in any form, used in manufacturing, or reverse engineered, sequenced, or otherwise studied or used to learn its design or composition without express written approval of BioLegend. Regardless of the information given in this document, user is solely responsible for determining any license requirements necessary for user's intended use and assumes all risk and liability arising from use of the product. BioLegend is not responsible for patent infringement or any other risks or liabilities whatsoever resulting from the use of its products.

BioLegend, the BioLegend logo, and all other trademarks are property of BioLegend, Inc. or their respective owners, and all rights are reserved.

8999 BioLegend Way, San Diego, CA 92121 www.biolegend.com
Toll-Free Phone: 1-877-Bio-Legend (246-5343) Phone: (858) 768-5800 Fax: (877) 455-9587