

## PE/Cyanine7 anti-human T-bet Recombinant Antibody

<b>Catalog# / Size</b>	365909 / 25 tests 365910 / 100 tests
<b>Clone</b>	QA18A24
<b>Regulatory Status</b>	RUO
<b>Other Names</b>	T-box expressed in T cells, T box 21, TBLYM
<b>Isotype</b>	Mouse IgG1, $\kappa$
<b>Description</b>	T-bet, also known as T-box transcription factor T-bet, is considered to be a "master regulator" of Th1 lymphoid development controlling the production of the cytokine IFN- $\gamma$ . T-bet is widely expressed in hematopoietic cells including stem cells, NK cells, B cells, and T cells. T-bet is critical for the control of microbial pathogens, and knockout animals show multiple physiologic and inflammatory features characteristic of asthma. T-bet expression is optimally observed after IL-12 stimulation and can be suppressed by addition of the Th2 cytokine IL-4 or neutralization of IL-12.

### Product Details

---

<b>Verified Reactivity</b>	Human
<b>Antibody Type</b>	Recombinant
<b>Host Species</b>	Mouse
<b>Formulation</b>	Phosphate-buffered solution, pH 7.2, containing 0.09% sodium azide and BSA (origin USA)
<b>Preparation</b>	The antibody was purified by affinity chromatography and conjugated with PE/Cyanine7 under optimal conditions.
<b>Concentration</b>	Lot-specific (to obtain lot-specific concentration and expiration, please enter the lot number in our <a href="#">Certificate of Analysis</a> online tool.)
<b>Storage &amp; Handling</b>	The antibody solution should be stored undiluted between 2°C and 8°C, and protected from prolonged exposure to light. <b>Do not freeze.</b>
<b>Application</b>	<a href="#">ICFC - Quality tested</a>
<b>Recommended Usage</b>	Each lot of this antibody is quality control tested by intracellular flow cytometry using our True-Nuclear™ Transcription Factor Staining Protocol. For flow cytometric staining, the suggested use of this reagent is 5 $\mu$ L per 10 <sup>6</sup> cells in 100 $\mu$ l volume. It is highly recommended that the reagent be titrated for optimal performance for each application.
<b>Excitation Laser</b>	Blue Laser (488 nm) Green Laser (532 nm)/Yellow-Green Laser (561 nm)
<b>Application Notes</b>	Clone QA18A24 can completely block the binding of clone 4B10 on target cells.

### Antigen Details

---

<b>Structure</b>	T-box transcription factor, approximately 58 kD.
<b>Distribution</b>	Nuclear; expressed in T cells, hematopoietic stem cells, NK cells, B cells, lung, spleen.
<b>Function</b>	Th1-specific T-box transcription factor controlling expression of the hallmark Th1 cytokine, interferon gamma (IFN- $\gamma$ ). T-bet expression is critical for the control of microbial pathogens.
<b>Interaction</b>	Human

<b>Cell Type</b>	B cells, Hematopoietic stem and progenitors, NK cells, T cells, Tregs
<b>Biology Area</b>	Cell Biology, Immunology, Transcription Factors
<b>Molecular Family</b>	Nuclear Markers
<b>Antigen References</b>	

1. Szabo SJ, *et al.* 2000. *Cell*. 100:655-69.
2. Szabo SJ, *et al.* 2002. *Science*. 295:338-42.
3. Finotto S, *et al.* 2002. *Science*. 295:336-8.
4. Mullen AC, *et al.* 2001. *Science*. 292:1907-10.

**Gene ID** [30009](#)

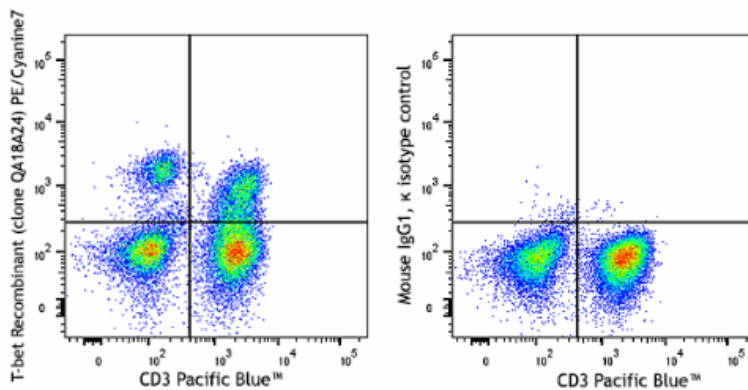
## Related Protocols

- [True-Nuclear™ Transcription Factor Staining Protocol for 96-Well U Bottom Plate](#)
- [True-Nuclear™ Transcription Factor Staining Protocol for 5mL Tubes](#)

## Other Formats

Purified anti-human T-bet Recombinant Antibody, PE anti-human T-bet Recombinant Antibody, APC anti-human T-bet Recombinant Antibody, PerCP/Cyanine5.5 anti-human T-bet Recombinant Antibody, PE/Cyanine7 anti-human T-bet Recombinant Antibody

## Product Data



Human peripheral blood mononuclear cells were surface stained with anti-human CD3 (clone OKT3) Pacific Blue™. Cells were fixed and permeabilized with the True-Nuclear™ Transcription Factor Buffer Set and then intracellularly stained with anti-human T-bet recombinant (clone QA18A24) PE/Cyanine7 (left) or mouse IgG1, κ PE/Cyanine7 isotype control (right).

For Research Use Only. Not for diagnostic or therapeutic use.

This product is supplied subject to the terms and conditions, including the limited license, located at [www.biolegend.com/terms](http://www.biolegend.com/terms) ("Terms") and may be used only as provided in the Terms. Without limiting the foregoing, BioLegend products may not be used for any Commercial Purpose as defined in the Terms, resold in any form, used in manufacturing, or reverse engineered, sequenced, or otherwise studied or used to learn its design or composition without express written approval of BioLegend. Regardless of the information given in this document, user is solely responsible for determining any license requirements necessary for user's intended use and assumes all risk and liability arising from use of the product. BioLegend is not responsible for patent infringement or any other risks or liabilities whatsoever resulting from the use of its products.

BioLegend, the BioLegend logo, and all other trademarks are property of BioLegend, Inc. or their respective owners, and all rights are reserved.

8999 BioLegend Way, San Diego, CA 92121 [www.biolegend.com](http://www.biolegend.com)  
Toll-Free Phone: 1-877-Bio-Legend (246-5343) Phone: (858) 768-5800 Fax: (877) 455-9587