

PE/Cyanine7 anti-mouse CD138 (Syndecan-1) Antibody

Catalog# / Size	112505 / 25 µg 112506 / 100 µg
Clone	W20051E
Regulatory Status	RUO
Other Names	Syndecan-1, Sdc1
Isotype	Rat IgG2b, κ
Description	CD138, a member of the syndecan protein family, is a type I integral membrane heparin sulfate proteoglycan also known as Syndecan-1. Syndecan-1 participates in cell proliferation, cell migration, and cell matrix adhesion via interaction with collagen, fibronectin, and other soluble molecules (such as FGF-basic). It is expressed on normal and malignant plasma cells, pre-B cells, mesenchymal cells, epithelial cells, and endothelial cells.

Product Details

Verified Reactivity	Mouse
Antibody Type	Monoclonal
Host Species	Rat
Immunogen	Mouse syndecan-1-transfected cells
Formulation	Phosphate-buffered solution, pH 7.2, containing 0.09% sodium azide.
Preparation	The antibody was purified by affinity chromatography and conjugated with PE/Cyanine7 under optimal conditions.
Concentration	0.2 mg/mL
Storage & Handling	The antibody solution should be stored undiluted between 2°C and 8°C, and protected from prolonged exposure to light. Do not freeze.
Application	FC - Quality tested
Recommended Usage	Each lot of this antibody is quality control tested by immunofluorescent staining with flow cytometric analysis . For flow cytometric staining, the suggested use of this reagent is ≤ 0.5 µg per million cells in 100 µL volume. It is recommended that the reagent be titrated for optimal performance for each application.
Excitation Laser	Blue Laser (488 nm) Green Laser (532 nm)/Yellow-Green Laser (561 nm)
RRID	AB_3674972 (BioLegend Cat. No. 112505) AB_3674972 (BioLegend Cat. No. 112506)

Antigen Details

Structure	Transmembrane heparan sulfate proteoglycan; member of the syndecan proteoglycan family, 100-200 kD
Distribution	Malignant plasma cells, pre-B cells, mesenchymal cells, epithelial cells, and endothelial cells
Function	Cell adhesion, cell motility, cell migration, cell proliferation
Ligand/Receptor	Collagen, fibronectin

Cell Type	B cells
Biology Area	Apoptosis/Tumor Suppressors/Cell Death, Cell Adhesion, Cell Biology, Cell Motility/Cytoskeleton/Structure, Immunology
Molecular Family	Adhesion Molecules, CD Molecules
Antigen References	<ol style="list-style-type: none"> 1. Zong F, <i>et al.</i> 2011. <i>PLoS ONE</i>. 6:e14816. 2. Yamashita Y, <i>et al.</i> 1999. <i>J Immunol</i>. 162:5940-8. 3. Sanderson RD, <i>et al.</i> 1989. <i>Cell Regul</i>. 1:181-5. 4. Szatmari T, <i>et al.</i> 2013. <i>Front Oncol</i>. 13:310.
Gene ID	20969

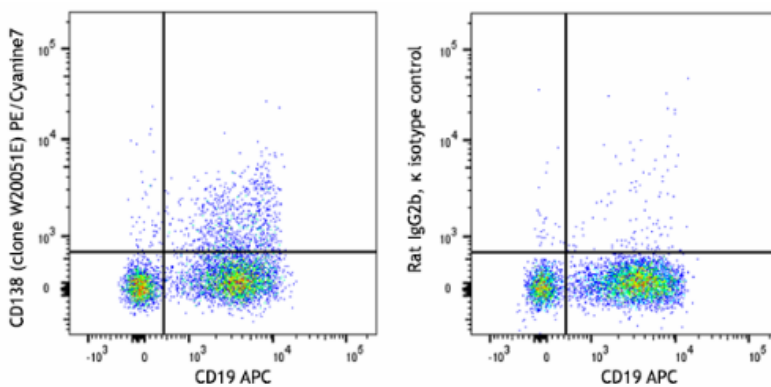
Related Protocols

- [Cell Surface Flow Cytometry Staining Protocol](#)

Other Formats

Purified anti-mouse CD138 (Syndecan-1), PE anti-mouse CD138 (Syndecan-1), PE/Cyanine7 anti-mouse CD138 (Syndecan-1), APC anti-mouse CD138 (Syndecan-1) Antibody

Product Data



C57BL/6 mouse bone marrow cells were stained with anti-mouse CD19 (clone 6D5) APC and anti-mouse CD138 (Syndecan-1) (clone W20051E) PE/Cyanine7 (left) or rat IgG2b, κ PE/Cyanine7 isotype control (right). Cells are gated on the lymphoid population.

For Research Use Only. Not for diagnostic or therapeutic use.

This product is supplied subject to the terms and conditions, including the limited license, located at www.biolegend.com/terms ("Terms") and may be used only as provided in the Terms. Without limiting the foregoing, BioLegend products may not be used for any Commercial Purpose as defined in the Terms, resold in any form, used in manufacturing, or reverse engineered, sequenced, or otherwise studied or used to learn its design or composition without express written approval of BioLegend. Regardless of the information given in this document, user is solely responsible for determining any license requirements necessary for user's intended use and assumes all risk and liability arising from use of the product. BioLegend is not responsible for patent infringement or any other risks or liabilities whatsoever resulting from the use of its products.

BioLegend, the BioLegend logo, and all other trademarks are property of BioLegend, Inc. or their respective owners, and all rights are reserved.

8999 BioLegend Way, San Diego, CA 92121 www.biolegend.com
Toll-Free Phone: 1-877-Bio-Legend (246-5343) Phone: (858) 768-5800 Fax: (877) 455-9587