

## PE/Cyanine7 anti-mouse CD25 Antibody

<b>Catalog# / Size</b>	113710 / 25 µg 113711 / 100 µg
<b>Clone</b>	A18246A
<b>Regulatory Status</b>	RUO
<b>Other Names</b>	IL-2R $\alpha$ , Ly-43, p55, Tac
<b>Isotype</b>	Rat IgG2a, $\kappa$
<b>Description</b>	CD25 is a 55 kD glycoprotein also known as the low affinity IL-2R $\alpha$ , Ly-43, p55, or Tac. It is expressed on activated T and B cells, thymocyte subsets, pre-B cells, and T regulatory cells. In association with CD122 (IL-2R $\beta$ ) and CD132 (common $\gamma$ chain), CD25 forms the high affinity signaling IL-2 receptor. CD25 plays a role in lymphocyte differentiation and activation/proliferation.

### Product Details

---

<b>Verified Reactivity</b>	Mouse
<b>Antibody Type</b>	Monoclonal
<b>Host Species</b>	Rat
<b>Formulation</b>	Phosphate-buffered solution, pH 7.2, containing 0.09% sodium azide.
<b>Preparation</b>	The antibody was purified by affinity chromatography and conjugated with PE/Cyanine7 under optimal conditions.
<b>Concentration</b>	0.2 mg/mL
<b>Storage &amp; Handling</b>	The antibody solution should be stored undiluted between 2°C and 8°C, and protected from prolonged exposure to light. <b>Do not freeze.</b>
<b>Application</b>	<a href="#">FC - Quality tested</a>
<b>Recommended Usage</b>	Each lot of this antibody is quality control tested by <a href="#">immunofluorescent staining with flow cytometric analysis</a> . For flow cytometric staining, the suggested use of this reagent is $\leq 0.25$ µg per million cells in 100 µL volume. It is recommended that the reagent be titrated for optimal performance for each application.
<b>Excitation Laser</b>	Blue Laser (488 nm) Green Laser (532 nm)/Yellow-Green Laser (561 nm)
<b>RRID</b>	AB_3674975 (BioLegend Cat. No. 113710) AB_3674975 (BioLegend Cat. No. 113711)

### Antigen Details

---

<b>Structure</b>	Forms high affinity IL-2R with IL-2R $\beta$ (CD122) and IL-2R $\gamma$ (CD132), 55 kD
<b>Distribution</b>	Activated T cells and B cells, thymocyte subset, pre-B cells, T regulatory cells
<b>Function</b>	IL-2 receptor
<b>Ligand/Receptor</b>	IL-2

## Antigen References

1. Taniguchi T, *et al.* 1993. *Cell*. 73:5-8.
2. Waldmann TA. 1991. *J Biol Chem*. 266:2681-4.
3. Read S, *et al.* 2000. *J Exp Med*. 192:295-302.
4. Lowenthal JW, *et al.* 1985. *J Immunol*. 135:3988-94.

Gene ID [16184](#)

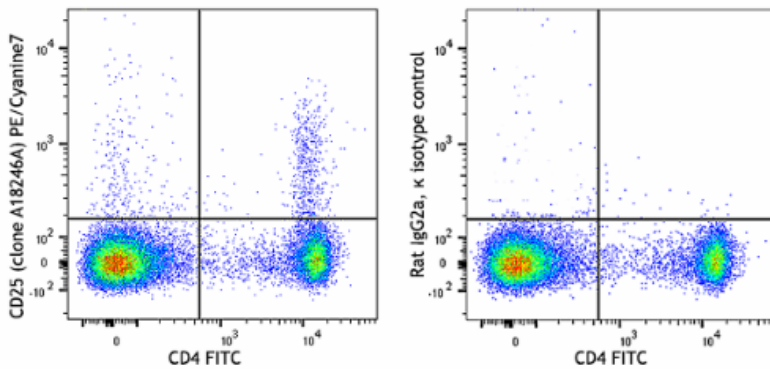
## Related Protocols

- [Cell Surface Flow Cytometry Staining Protocol](#)

## Other Formats

Purified anti-mouse CD25, PE anti-mouse CD25, Brilliant Violet 421™ anti-mouse CD25, Brilliant Violet 605™ anti-mouse CD25, APC anti-mouse CD25, PE/Cyanine7 anti-mouse CD25 Antibody

## Product Data



C57BL/6 mouse splenocytes were stained with anti-mouse CD4 APC (clone GK1.5) and anti-mouse CD25 (clone A18246A) PE/Cyanine7 (left) or rat IgG2a, κ PE/Cyanine7 isotype control (right).

For Research Use Only. Not for diagnostic or therapeutic use.

This product is supplied subject to the terms and conditions, including the limited license, located at [www.biolegend.com/terms](http://www.biolegend.com/terms) ("Terms") and may be used only as provided in the Terms. Without limiting the foregoing, BioLegend products may not be used for any Commercial Purpose as defined in the Terms, resold in any form, used in manufacturing, or reverse engineered, sequenced, or otherwise studied or used to learn its design or composition without express written approval of BioLegend. Regardless of the information given in this document, user is solely responsible for determining any license requirements necessary for user's intended use and assumes all risk and liability arising from use of the product. BioLegend is not responsible for patent infringement or any other risks or liabilities whatsoever resulting from the use of its products.

BioLegend, the BioLegend logo, and all other trademarks are property of BioLegend, Inc. or their respective owners, and all rights are reserved.

8999 BioLegend Way, San Diego, CA 92121 [www.biolegend.com](http://www.biolegend.com)  
Toll-Free Phone: 1-877-Bio-Legend (246-5343) Phone: (858) 768-5800 Fax: (877) 455-9587