

## PE/Cyanine7 anti-mouse CD90 (Thy1) Antibody

<b>Catalog# / Size</b>	166409 / 25 µg 166410 / 100 µg
<b>Clone</b>	W20280E
<b>Regulatory Status</b>	RUO
<b>Other Names</b>	Thy-1, Thy1
<b>Isotype</b>	Rat IgG2a, κ
<b>Description</b>	CD90, also known as Thy-1, is a 25-35 kD immunoglobulin superfamily member. It is expressed on hematopoietic stem cells, neurons, all thymocytes, and peripheral T cells, but not on B cells. CD90 is a glycosylphosphatidylinositol (GPI)-anchored membrane glycoprotein involved in signal transduction. CD90 is involved in co-stimulation of lymphocyte proliferation and activation, and hematopoietic stem cell differentiation. CD90 has been shown to interact with CD45.

### Product Details

---

<b>Verified Reactivity</b>	Mouse
<b>Antibody Type</b>	Monoclonal
<b>Host Species</b>	Rat
<b>Immunogen</b>	Recombinant mouse CD90 protein
<b>Formulation</b>	Phosphate-buffered solution, pH 7.2, containing 0.09% sodium azide.
<b>Preparation</b>	The antibody was purified by affinity chromatography and conjugated with PE/Cyanine7 under optimal conditions.
<b>Concentration</b>	Precise lot-specific concentrations are provided for accurate titration due to the low recommended usage of this product. To obtain lot-specific concentration and expiration, please enter the lot number in our <a href="#">Certificate of Analysis</a> online tool.
<b>Storage &amp; Handling</b>	The antibody solution should be stored undiluted between 2°C and 8°C, and protected from prolonged exposure to light. <b>Do not freeze.</b>
<b>Application</b>	<a href="#">FC - Quality tested</a>
<b>Recommended Usage</b>	Each lot of this antibody is quality control tested by <a href="#">immunofluorescent staining with flow cytometric analysis</a> . For flow cytometric staining, the suggested use of this reagent is ≤ 0.03 µg per million cells in 100 µL volume. It is recommended that the reagent be titrated for optimal performance for each application.
<b>Excitation Laser</b>	Blue Laser (488 nm) Green Laser (532 nm)/Yellow-Green Laser (561 nm)
<b>Application Notes</b>	Clone W20280E can recognize both mouse CD90.1 (Thy1.1) and CD90.2 (Thy1.2) variants.
<b>RRID</b>	AB_3683189 (BioLegend Cat. No. 166409) AB_3683189 (BioLegend Cat. No. 166410)

### Antigen Details

---

<b>Structure</b>	Ig superfamily, 25-35 kD
<b>Distribution</b>	Hematopoietic stem cells and neurons, thymocytes, T cells

<b>Function</b>	Lymphocyte costimulation, proliferation and differentiation of hematopoietic stem cells
<b>Ligand/Receptor</b>	CD45
<b>Cell Type</b>	Endothelial cells, Fibroblasts, Hematopoietic stem and progenitors, Leukemia, Mesenchymal Stem Cells, Neurons, Thymocytes
<b>Biology Area</b>	Immunology, Stem Cells
<b>Molecular Family</b>	CD Molecules
<b>Antigen References</b>	<ol style="list-style-type: none"> <li>1. Barclay A, <i>et al.</i> 1997. <i>The Leukocyte Antigen FactsBook</i> Academic Press.</li> <li>2. Craig W, <i>et al.</i> 1993. <i>J Exp Med.</i> 177:1331-42.</li> <li>3. Mayani H, <i>et al.</i> 1994. <i>Blood.</i> 83:2410-7.</li> </ol>
<b>Gene ID</b>	<a href="#">21838</a>

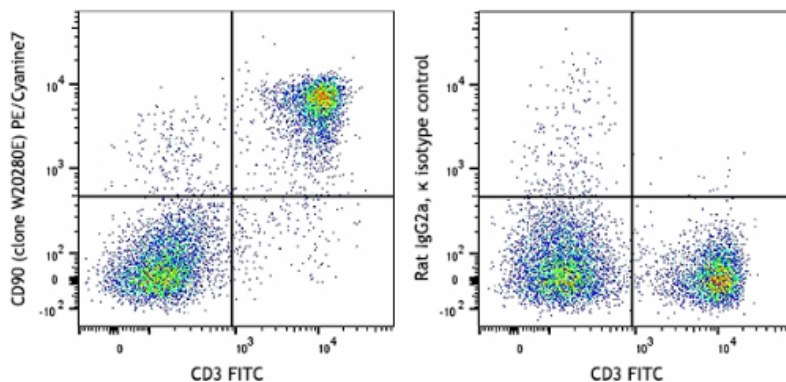
## Related Protocols

- [Cell Surface Flow Cytometry Staining Protocol](#)

## Other Formats

Purified anti-mouse CD90 (Thy1), FITC anti-mouse CD90 (Thy1), APC anti-mouse CD90 (Thy1), PE anti-mouse CD90 (Thy1), PE/Cyanine7 anti-mouse CD90 (Thy1)

## Product Data



C57BL/6 mouse splenocytes were stained with anti-mouse CD3 (clone 17A2) FITC and anti-mouse CD90 (Thy1) (clone W20280E) PE/Cyanine7 (left) or rat IgG2a, κ PE/Cyanine7 isotype control (right).

For Research Use Only. Not for diagnostic or therapeutic use.

This product is supplied subject to the terms and conditions, including the limited license, located at [www.biolegend.com/terms](http://www.biolegend.com/terms) ("Terms") and may be used only as provided in the Terms. Without limiting the foregoing, BioLegend products may not be used for any Commercial Purpose as defined in the Terms, resold in any form, used in manufacturing, or reverse engineered, sequenced, or otherwise studied or used to learn its design or composition without express written approval of BioLegend. Regardless of the information given in this document, user is solely responsible for determining any license requirements necessary for user's intended use and assumes all risk and liability arising from use of the product. BioLegend is not responsible for patent infringement or any other risks or liabilities whatsoever resulting from the use of its products.

BioLegend, the BioLegend logo, and all other trademarks are property of BioLegend, Inc. or their respective owners, and all rights are reserved.

8999 BioLegend Way, San Diego, CA 92121 [www.biolegend.com](http://www.biolegend.com)  
 Toll-Free Phone: 1-877-Bio-Legend (246-5343) Phone: (858) 768-5800 Fax: (877) 455-9587