

## PE/Dazzle™ 594 anti-human CD2 Antibody

<b>Catalog# / Size</b>	309243 / 25 tests 309244 / 100 tests
<b>Clone</b>	TS1/8
<b>Regulatory Status</b>	RUO
<b>Workshop</b>	V S025
<b>Other Names</b>	LFA-2, T11, SRBC-R
<b>Isotype</b>	Mouse IgG1, κ
<b>Description</b>	CD2 is a 50 kD type I transmembrane glycoprotein also known as LFA-2, T11, and sheep red blood cell receptor (SRBC-R). This immunoglobulin superfamily member is expressed on thymocytes, T lymphocytes, NK cells, and thymic B cell subsets. The major ligand for CD2 is CD58 (also known as LFA-3). CD2 has also been reported to bind CD48, CD59, and CD15. CD2 plays a critical role in alternative T cell activation, T cell signaling, and cell-cell adhesion.

### Product Details

---

<b>Verified Reactivity</b>	Human
<b>Antibody Type</b>	Monoclonal
<b>Host Species</b>	Mouse
<b>Formulation</b>	Phosphate-buffered solution, pH 7.2, containing 0.09% sodium azide and BSA (origin USA)
<b>Preparation</b>	The antibody was purified by affinity chromatography and conjugated with PE/Dazzle™ 594 under optimal conditions.
<b>Concentration</b>	Lot-specific (to obtain lot-specific concentration and expiration, please enter the lot number in our <a href="#">Certificate of Analysis</a> online tool.)
<b>Storage &amp; Handling</b>	The antibody solution should be stored undiluted between 2°C and 8°C, and protected from prolonged exposure to light. <b>Do not freeze.</b>
<b>Application</b>	<a href="#">FC - Quality tested</a>
<b>Recommended Usage</b>	Each lot of this antibody is quality control tested by <a href="#">immunofluorescent staining with flow cytometric analysis</a> . For flow cytometric staining, the suggested use of this reagent is 5 µL per million cells in 100 µL staining volume or 5 µL per 100 µL of whole blood. It is recommended that the reagent be titrated for optimal performance for each application.  * PE/Dazzle™ 594 has a maximum excitation of 566 nm and a maximum emission of 610 nm.
<b>Excitation Laser</b>	Blue Laser (488 nm) Green Laser (532 nm)/Yellow-Green Laser (561 nm)
<b>Application Notes</b>	Additional reported applications (for the relevant formats) include: blocking of T cell activation, and partial blocking of B cell costimulation <sup>2</sup> . The Ultra-LEAF™ purified antibody (Endotoxin < 0.01 EU/µg, Azide-Free, 0.2 µm filtered) is recommended for functional assays (Cat. Nos. 309235 & 309236).
<b>Application References</b>	1. Schlossman S, et al. Eds. 1995. Leucocyte Typing V Oxford University Press. New York. 2. Hughes CCW, et al. 1996. <i>J. Biol. Chem.</i> 271:5369.
<b>(PubMed link indicates BioLegend citation)</b>	
<b>RRID</b>	AB_3675037 (BioLegend Cat. No. 309243) AB_3675037 (BioLegend Cat. No. 309244)

## Antigen Details

<b>Structure</b>	Ig superfamily, type I transmembrane glycoprotein, 50 kD
<b>Distribution</b>	T cells, NK cells, thymocytes, and thymic B cell subsets
<b>Function</b>	T cell activation, adhesion
<b>Ligand/Receptor</b>	CD58 (LFA-3), CD48, CD59, CD15
<b>Cell Type</b>	B cells, NK cells, T cells, Thymocytes
<b>Biology Area</b>	Costimulatory Molecules, Immunology
<b>Molecular Family</b>	CD Molecules
<b>Antigen References</b>	1. Bell G, <i>et al.</i> 1995. <i>J. Immunol.</i> 155:2805. 2. Bierer B, <i>et al.</i> 1989. <i>Annu. Rev. Immunol.</i> 7:579. 3. Moingeon P, <i>et al.</i> 1989. <i>Immunol. Rev.</i> 111:111.
<b>Gene ID</b>	<a href="#">914</a>

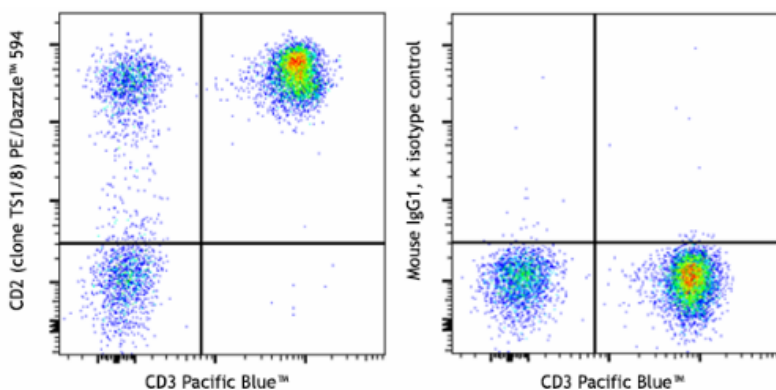
## Related Protocols

- [Cell Surface Flow Cytometry Staining Protocol](#)

## Other Formats

FITC anti-human CD2, PE anti-human CD2, Purified anti-human CD2, Pacific Blue™ anti-human CD2, PE/Cyanine7 anti-human CD2, Brilliant Violet 421™ anti-human CD2, Purified anti-human CD2 (Maxpar® Ready), PerCP/Cyanine5.5 anti-human CD2, APC anti-human CD2, APC/Fire™ 750 anti-human CD2, Alexa Fluor® 700 anti-human CD2, TotalSeq™-A0367 anti-human CD2, TotalSeq™-C0367 anti-human CD2, TotalSeq™-B0367 anti-human CD2, Ultra-LEAF™ Purified anti-human CD2, APC/Cyanine7 anti-human CD2, TotalSeq™-D0367 anti-human CD2, GMP PE anti-human CD2, GMP FITC anti-human CD2, GMP APC/Fire™ 750 anti-human CD2, Alexa Fluor® 647 anti-human CD2, PE/Dazzle™ 594 anti-human CD2, Brilliant Violet 605™ anti-human CD2, Brilliant Violet 785™ anti-human CD2

## Product Data



Human peripheral blood lymphocytes were stained with anti-human CD3 (clone UCHT1) Pacific Blue™ and anti-human CD2 (clone TS1/8) PE/Dazzle™ 594 (left) or mouse IgG1, κ PE/Dazzle™ 594 isotype control (right).

For Research Use Only. Not for diagnostic or therapeutic use.

This product is supplied subject to the terms and conditions, including the limited license, located at [www.biolegend.com/terms](http://www.biolegend.com/terms) ("Terms") and may be used only as provided in the Terms. Without limiting the foregoing, BioLegend products may not be used for any Commercial Purpose as defined in the Terms, resold in any form, used in manufacturing, or reverse engineered, sequenced, or otherwise studied or used to learn its design or composition without express written approval of BioLegend. Regardless of the information given in this document, user is solely responsible for determining any license requirements necessary for user's intended use and assumes all risk and liability arising from use of the product. BioLegend is not responsible for patent infringement or any other risks or liabilities whatsoever resulting from the use of its products.

BioLegend, the BioLegend logo, and all other trademarks are property of BioLegend, Inc. or their respective owners, and all rights are reserved.

8999 BioLegend Way, San Diego, CA 92121 [www.biolegend.com](http://www.biolegend.com)  
Toll-Free Phone: 1-877-Bio-Legend (246-5343) Phone: (858) 768-5800 Fax: (877) 455-9587