

PE/Dazzle™ 594 anti-human CD25 Antibody

Catalog# / Size	385223 / 25 tests 385224 / 100 tests
Clone	S20019D
Regulatory Status	RUO
Other Names	interleukin-2 receptor alpha chain, interleukin-2 receptor, IL2RA, IL-2R α
Isotype	Mouse IgG1, κ
Description	CD25 is a 55 kD transmembrane protein also known as interleukin-2 receptor alpha chain. CD25 in combination with CD122 and CD132 form a high affinity IL-2 receptor that binds to IL-2, playing a crucial role in activation of JAK1/JAK3 and STAT5 signaling. It is expressed on activated T cells as well as on CD4+ T regulatory cells, some progenitor B-cells and activated monocytes.

Product Details

Verified Reactivity	Human
Antibody Type	Monoclonal
Host Species	Mouse
Immunogen	Human CD25 transfected cells
Formulation	Phosphate-buffered solution, pH 7.2, containing 0.09% sodium azide and BSA (origin USA)
Preparation	The antibody was purified by affinity chromatography and conjugated with PE/Dazzle™ 594 under optimal conditions.
Concentration	Lot-specific (to obtain lot-specific concentration and expiration, please enter the lot number in our Certificate of Analysis online tool.)
Storage & Handling	The antibody solution should be stored undiluted between 2°C and 8°C, and protected from prolonged exposure to light. Do not freeze.
Application	FC - Quality tested
Recommended Usage	Each lot of this antibody is quality control tested by immunofluorescent staining with flow cytometric analysis . For flow cytometric staining, the suggested use of this reagent is 5 μ L per million cells in 100 μ L staining volume or 5 μ L per 100 μ L of whole blood. It is recommended that the reagent be titrated for optimal performance for each application. * PE/Dazzle™ 594 has a maximum excitation of 566 nm and a maximum emission of 610 nm.
Excitation Laser	Blue Laser (488 nm) Green Laser (532 nm)/Yellow-Green Laser (561 nm)
Application Notes	Clone S20019D can block binding of clone M-A251 on target cells and is blocked by M-A251. Clone S20019D does not block binding of clones S20019C, BC96, and TÛ69 on target cells. Clone S20019D does not affect binding of IL-2 to the receptor. Clone S20019D shows comparable CD25 staining on 4% formaldehyde-fixed cells compared to unfixed.
RRID	AB_3675101 (BioLegend Cat. No. 385223) AB_3675101 (BioLegend Cat. No. 385224)

Antigen Details

Structure	55 kD transmembrane protein
------------------	-----------------------------

Distribution	Activated T cells, T regulatory cells, monocytes
Function	IL-2 receptor
Interaction	CD122, CD132
Ligand/Receptor	IL-2
Cell Type	Lymphocytes, T cells, Tregs
Biology Area	Cell Biology, Immunology
Molecular Family	CD Molecules, Cytokine/Chemokine Receptors
Antigen References	<ol style="list-style-type: none"> Schlossman S, <i>et al.</i> Eds. 1995. <i>Leucocyte Typing V. Oxford University Press. New York.</i> Waldmann T. 1991. <i>J Biol Chem.</i> 266:2681-4. Sakaguchi S, <i>et al.</i> 1995. <i>The Journal of Immunology.</i> 155:1151-64.
Gene ID	3559

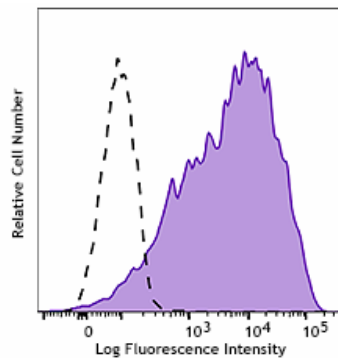
Related Protocols

- [Cell Surface Flow Cytometry Staining Protocol](#)

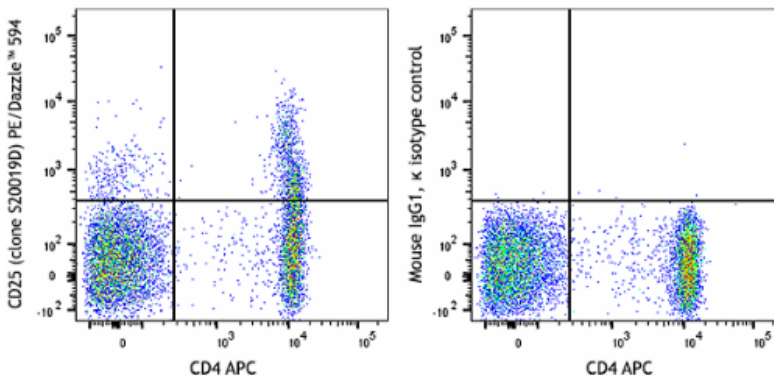
Other Formats

Purified anti-human CD25, PE/Cyanine7 anti-human CD25, APC anti-human CD25, Brilliant Violet 421™ anti-human CD25, PE anti-human CD25, Spark Red™ 718 anti-human CD25, Brilliant Violet 711™ anti-human CD25, APC/Fire™ 750 anti-human CD25, PE/Cyanine5 anti-human CD25, PE/Fire™ 700 anti-human CD25, PerCP/Cyanine5.5 anti-human CD25, Biotin anti-human CD25, PE/Dazzle™ 594 anti-human CD25

Product Data



PHA-activated (3 days) human peripheral blood mononuclear cells were stained with anti-human CD25 (clone S20019D) PE/Dazzle™ 594 (filled histogram) or mouse IgG1, κ PE/Dazzle™ 594 isotype control (open histogram). Data shown was gated on the lymphocyte population.



Human peripheral blood lymphocytes were stained with anti-human CD4 (clone RPA-T4) APC and anti-human CD25 (clone S20019D) PE/Dazzle™ 594 (left) or mouse IgG1, κ PE/Dazzle™ 594 isotype control (right).

This product is supplied subject to the terms and conditions, including the limited license, located at www.biolegend.com/terms ("Terms") and may be used only as provided in the Terms. Without limiting the foregoing, BioLegend products may not be used for any Commercial Purpose as defined in the Terms, resold in any form, used in manufacturing, or reverse engineered, sequenced, or otherwise studied or used to learn its design or composition without express written approval of BioLegend. Regardless of the information given in this document, user is solely responsible for determining any license requirements necessary for user's intended use and assumes all risk and liability arising from use of the product. BioLegend is not responsible for patent infringement or any other risks or liabilities whatsoever resulting from the use of its products.

BioLegend, the BioLegend logo, and all other trademarks are property of BioLegend, Inc. or their respective owners, and all rights are reserved.

8999 BioLegend Way, San Diego, CA 92121 www.biolegend.com
Toll-Free Phone: 1-877-Bio-Legend (246-5343) Phone: (858) 768-5800 Fax: (877) 455-9587