

PE/Fire™ 640 anti-human CD25 Antibody

Catalog# / Size	302657 / 25 tests 302658 / 100 tests
Clone	BC96
Regulatory Status	RUO
Workshop	V T-072
Other Names	Low affinity IL-2R, IL-2R α chain, Tac, p55
Isotype	Mouse IgG1, κ
Description	CD25 is a 55 kD type I transmembrane glycoprotein also known as the low affinity IL-2 receptor α chain or Tac. It is expressed on progenitor lymphocytes, activated T and B cells, and activated monocytes/macrophages. CD25 is also expressed on a subset of non-stimulated CD4 ⁺ T cells termed T regulatory cells. CD25 associates with the IL-2 receptor β (CD122) and common γ chains (CD132) to form the high affinity IL-2R complex.

Product Details

Verified Reactivity	Human
Reported Reactivity	Baboon, Chimpanzee, Cynomolgus, Pigtailed Macaque, Rhesus
Antibody Type	Monoclonal
Host Species	Mouse
Formulation	Phosphate-buffered solution, pH 7.2, containing 0.09% sodium azide and BSA (origin USA)
Preparation	The antibody was purified by affinity chromatography and conjugated with PE/Fire™ 640 under optimal conditions.
Concentration	Lot-specific (to obtain lot-specific concentration and expiration, please enter the lot number in our Certificate of Analysis online tool.)
Storage & Handling	The antibody solution should be stored undiluted between 2°C and 8°C, and protected from prolonged exposure to light. Do not freeze.
Application	FC - Quality tested
Recommended Usage	Each lot of this antibody is quality control tested by immunofluorescent staining with flow cytometric analysis . For flow cytometric staining, the suggested use of this reagent is 5 μ L per million cells in 100 μ L staining volume or 5 μ L per 100 μ L of whole blood. It is recommended that the reagent be titrated for optimal performance for each application. * PE/Fire™ 640 has a maximum excitation of 566 nm and a maximum emission of 639 nm.
Excitation Laser	Blue Laser (488 nm) Green Laser (532 nm)/Yellow-Green Laser (561 nm)
Application Notes	Additional reported applications include: immunocytochemistry ³ .
Application References	1. Schlossman S, <i>et al.</i> Eds. 1995. Leucocyte Typing V. Oxford University Press. New York. 2. Kmiecik M, <i>et al.</i> 2009. <i>J. Transl. Med.</i> 7:89. (FC) PubMed 3. Ernst CW, <i>et al.</i> 2007. <i>Clin. Exp. Immunol.</i> 148:271. (ICC) PubMed
(PubMed link indicates BioLegend citation)	
RRID	AB_3698952 (BioLegend Cat. No. 302657) AB_3698952 (BioLegend Cat. No. 302658)

Antigen Details

Structure	Type I transmembrane glycoprotein, 55 kD
Distribution	Activated T cells and B cells, monocytes/macrophages, Treg
Function	Associates with IL-2 receptor β (CD122) and γ chains (CD132) to form high affinity IL-2R complex
Ligand/Receptor	IL-2
Cell Type	B cells, Macrophages, Monocytes, T cells, Tregs
Biology Area	Cell Biology, Immunology, Neuroscience, Neuroscience Cell Markers
Molecular Family	CD Molecules, Cytokine/Chemokine Receptors
Antigen References	1. Taniguchi T, <i>et al.</i> 1993. <i>Cell</i> 73:5. 2. Waldmann T. 1991. <i>J. Biol. Chem.</i> 266:2681.
Gene ID	3559

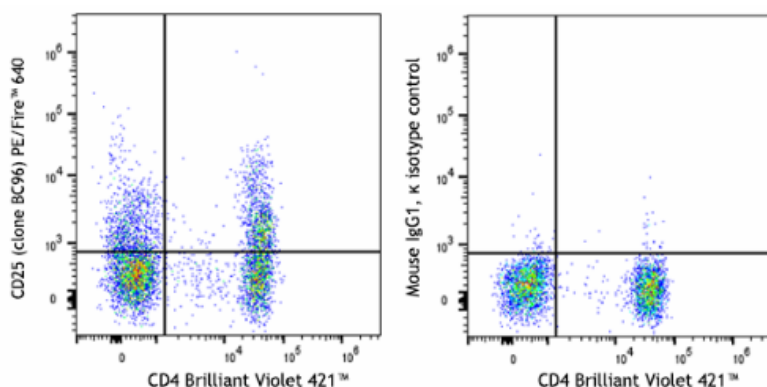
Related Protocols

- [Cell Surface Flow Cytometry Staining Protocol](#)

Other Formats

APC anti-human CD25, FITC anti-human CD25, PE anti-human CD25, PE/Cyanine5 anti-human CD25, Purified anti-human CD25, APC/Cyanine7 anti-human CD25, PE/Cyanine7 anti-human CD25, Alexa Fluor® 488 anti-human CD25, Alexa Fluor® 647 anti-human CD25, Pacific Blue™ anti-human CD25, Alexa Fluor® 700 anti-human CD25, Biotin anti-human CD25, PerCP/Cyanine5.5 anti-human CD25, Brilliant Violet 421™ anti-human CD25, Brilliant Violet 605™ anti-human CD25, Brilliant Violet 650™ anti-human CD25, Brilliant Violet 711™ anti-human CD25, Brilliant Violet 785™ anti-human CD25, Brilliant Violet 510™ anti-human CD25, APC/Fire™ 750 anti-human CD25, TotalSeq™-A0085 anti-human CD25, PE/Dazzle™ 594 anti-human CD25, TotalSeq™-B0085 anti-human CD25, TotalSeq™-C0085 anti-human CD25, TotalSeq™-D0085 anti-human CD25, APC/Fire™ 810 anti-human CD25 Antibody, PerCP anti-human CD25, PE/Fire™ 640 anti-human CD25, Brilliant Violet 570™ anti-human CD25, Spark YG™ 593 anti-human CD25 (Flexi-Fluor™) Antibody

Product Data



Human peripheral blood lymphocytes were stained with anti-human CD4 (clone RPA-T4) Brilliant Violet 421™ and anti-human CD25 (clone BC96) PE/Fire™ 640 (left) or mouse IgG1, κ PE/Fire™ 640 isotype control (right).

For Research Use Only. Not for diagnostic or therapeutic use.

This product is supplied subject to the terms and conditions, including the limited license, located at www.biolegend.com/terms ("Terms") and may be used only as provided in the Terms. Without limiting the foregoing, BioLegend products may not be used for any Commercial Purpose as defined in the Terms, resold in any form, used in manufacturing, or reverse engineered, sequenced, or otherwise studied or used to learn its design or composition without express written approval of BioLegend. Regardless of the information given in this document, user is solely responsible for determining any license requirements necessary for user's intended use and assumes all risk and liability arising from use of the product. BioLegend is not responsible for patent infringement or any other risks or liabilities whatsoever resulting from the use of its products.

BioLegend, the BioLegend logo, and all other trademarks are property of BioLegend, Inc. or their respective owners, and all rights are reserved.

8999 BioLegend Way, San Diego, CA 92121 www.biolegend.com
Toll-Free Phone: 1-877-Bio-Legend (246-5343) Phone: (858) 768-5800 Fax: (877) 455-9587