

## PE/Fire™ 744 anti-human CD196 (CCR6) Antibody

<b>Catalog# / Size</b>	353463 / 25 tests 353464 / 100 tests
<b>Clone</b>	G034E3
<b>Regulatory Status</b>	RUO
<b>Other Names</b>	BN-1, CKR6, DCR2, CKRL3, DRY-6, GPR29, CKR-L3, CMKBR6, GPRCY4, STRL22, GPR-CY4
<b>Isotype</b>	Mouse IgG2b, κ
<b>Description</b>	<p>CCR6, also known as CD196, is a chemokine receptor that is expressed on immature dendritic cells, B lymphocytes, and memory T cells. CCR6 binds CCL20, although members of the β defensin family also bind CCR6 with a lower affinity. CCR6 positive cells, and its ligand CCL20, have been detected in numerous organs, especially the secondary lymphoid organ. CCL20 is selectively made by the follicle-associated epithelium (FAE) overlying Peyer's Patches (PPs) and isolated lymphoid follicles (ILFs). CCL20 contributes to the recruitment of CCR6-expressing B cells to these structures. In humans, CCR6 can function to mediate arrest of T cells on dermal endothelial cells and is highly expressed on T cells resident in both normal and psoriatic skin. CCR6 and/or CCL20 have been implicated in the pathogenesis of rheumatoid arthritis and inflammatory bowel disease. Human T cells that are able to produce IL-17 express CCR6. It suggests that CCL20 and CCR6 have a role in inflammatory diseases by recruiting Th17 cells to target tissues.</p>

### Product Details

---

<b>Verified Reactivity</b>	Human, Cynomolgus, Rhesus
<b>Reported Reactivity</b>	African Green, Baboon
<b>Antibody Type</b>	Monoclonal
<b>Host Species</b>	Mouse
<b>Immunogen</b>	CCR6-transfected cells
<b>Formulation</b>	Phosphate-buffered solution, pH 7.2, containing 0.09% sodium azide and BSA (origin USA)
<b>Preparation</b>	The antibody was purified by affinity chromatography and conjugated with PE/Fire™ 744 under optimal conditions.
<b>Concentration</b>	Lot-specific (to obtain lot-specific concentration and expiration, please enter the lot number in our <a href="#">Certificate of Analysis</a> online tool.)
<b>Storage &amp; Handling</b>	The antibody solution should be stored undiluted between 2°C and 8°C, and protected from prolonged exposure to light. <b>Do not freeze.</b>
<b>Application</b>	<a href="#">FC - Quality tested</a>
<b>Recommended Usage</b>	<p>Each lot of this antibody is quality control tested by <a href="#">immunofluorescent staining with flow cytometric analysis</a>. For flow cytometric staining, the suggested use of this reagent is 5 µL per million cells in 100 µL staining volume or 5 µL per 100 µL of whole blood. It is recommended that the reagent be titrated for optimal performance for each application.</p> <p>True-Stain Monocyte Blocker™ (Cat No. 426102) is recommended to minimize non-specific staining of PE/Fire™ 744 on monocytes and macrophages.</p> <p>* PE/Fire™ 744 has a maximum excitation of 565 nm and a maximum emission of 744 nm.</p>
<b>Excitation Laser</b>	Blue Laser (488 nm) Green Laser (532 nm)/Yellow-Green Laser (561 nm)
<b>RRID</b>	AB_3683374 (BioLegend Cat. No. 353463)

## Antigen Details

<b>Structure</b>	Chemokine receptor, GPCR, seven transmembrane receptor
<b>Distribution</b>	Immature dendritic cells, B lymphocytes, memory T cells, Th17 cells
<b>Function</b>	Host defense, important for recruitment of B cells to secondary lymphoid organs, mediates arrest of T cells on dermal endothelial cells
<b>Ligand/Receptor</b>	CCL20 (MIP-3 $\alpha$ )
<b>Cell Type</b>	B cells, Dendritic cells, T cells, Th17
<b>Biology Area</b>	Immunology
<b>Molecular Family</b>	CD Molecules, Cytokine/Chemokine Receptors, GPCR
<b>Antigen References</b>	<ol style="list-style-type: none"> <li>1. Zaballos A, <i>et al.</i> 1996. <i>Biochem. Bioph. Res. Co.</i> 227:846.</li> <li>2. Yang D, <i>et al.</i> 1999. <i>Science</i> 286:525.</li> <li>3. MacDonald KG, <i>et al.</i> 2007. <i>Am. J. Pathol.</i> 170:1229.</li> <li>4. Homey B, <i>et al.</i> 2000. <i>J. Immunol.</i> 164:6621.</li> <li>5. Hirota K, <i>et al.</i> 2007. <i>J. Exp. Med.</i> 204:2803.</li> <li>6. Singh SP, <i>et al.</i> 2008. <i>J. Immunol.</i> 180:214.</li> </ol>
<b>Gene ID</b>	<a href="#">1235</a>

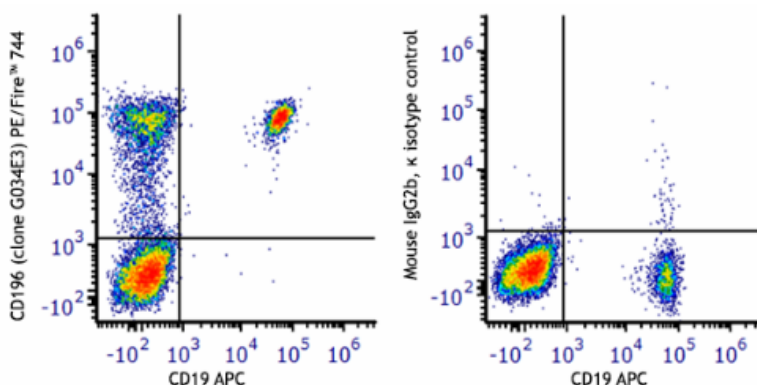
## Related Protocols

- [Cell Surface Flow Cytometry Staining Protocol](#)

## Other Formats

Purified anti-human CD196 (CCR6), Alexa Fluor® 647 anti-human CD196 (CCR6), Brilliant Violet 421™ anti-human CD196 (CCR6), PerCP/Cyanine5.5 anti-human CD196 (CCR6), PE anti-human CD196 (CCR6), FITC anti-human CD196 (CCR6), Alexa Fluor® 488 anti-human CD196 (CCR6), APC anti-human CD196 (CCR6), PE/Cyanine7 anti-human CD196 (CCR6), Brilliant Violet 605™ anti-human CD196 (CCR6), Brilliant Violet 785™ anti-human CD196 (CCR6), Brilliant Violet 510™ anti-human CD196 (CCR6), Brilliant Violet 650™ anti-human CD196 (CCR6), Purified anti-human CD196 (CCR6) (Maxpar® Ready), PE/Dazzle™ 594 anti-human CD196 (CCR6), APC/Cyanine7 anti-human CD196 (CCR6), Alexa Fluor® 700 anti-human CD196 (CCR6), Brilliant Violet 711™ anti-human CD196 (CCR6), TotalSeq™-A0143 anti-human CD196 (CCR6), Pacific Blue™ anti-human CD196 (CCR6), TotalSeq™-C0143 anti-human CD196 (CCR6), APC/Fire™ 750 anti-human CD196 (CCR6), TotalSeq™-B0143 anti-human CD196 (CCR6), TotalSeq™-D0143 anti-human CD196 (CCR6), PE/Fire™ 640 anti-human CD196 (CCR6), APC/Fire™ 810 anti-human CD196 (CCR6), Spark NIR™ 685 anti-human CD196 (CCR6), PE/Fire™ 700 anti-human CD196 (CCR6), PE/Cyanine5 anti-human CD196 (CCR6), Biotin anti-human CD196 (CCR6), PE/Fire™ 810 anti-human CD196 (CCR6), PE/Fire™ 744 anti-human CD196 (CCR6), PerCP/Fire™ 780 anti-human CD196 (CCR6) Antibody, Spark PLUS UV395™ anti-human CD196 (CCR6), PerCP/Fire™ 806 anti-human CD196 (CCR6)

## Product Data



Human peripheral blood lymphocytes were stained with anti-human CD19 (clone HIB19) APC and anti-human CD196 (CCR6) (clone G034E3) PE/Fire™ 744 (left) or mouse IgG2b,  $\kappa$  PE/Fire™ 744 isotype control (right).

For Research Use Only. Not for diagnostic or therapeutic use.

This product is supplied subject to the terms and conditions, including the limited license, located at [www.biolegend.com/terms](http://www.biolegend.com/terms) ("Terms") and may be used only as provided in the Terms. Without limiting the foregoing, BioLegend products may not be used for any Commercial Purpose as defined in the Terms, resold in any form, used in manufacturing, or reverse engineered, sequenced, or otherwise studied or used to learn its design or composition without express written approval of BioLegend. Regardless of the information given in this document, user is solely responsible for determining any license requirements necessary for user's intended use and assumes all risk and liability arising from use of the product. BioLegend is not responsible for patent infringement or any other risks or liabilities whatsoever resulting from the use of its products.

BioLegend, the BioLegend logo, and all other trademarks are property of BioLegend, Inc. or their respective owners, and all rights are reserved.

8999 BioLegend Way, San Diego, CA 92121 [www.biolegend.com](http://www.biolegend.com)  
Toll-Free Phone: 1-877-Bio-Legend (246-5343) Phone: (858) 768-5800 Fax: (877) 455-9587