

PerCP/Fire™ 780 anti-human CD8b Antibody

Catalog# / Size	387317 / 25 tests 387318 / 100 tests
Clone	S21011A
Regulatory Status	RUO
Other Names	Lyt3, Ly3, P37, LEU2, CD8B1, CD8b, CD8beta
Isotype	Mouse IgG1, κ
Description	CD8b or CD8β antigen is also known as Lyt3, or Ly-3. It is a member of the immunoglobulin superfamily expressed on most thymocytes, and some mature T cell subsets. CD8β forms heterodimers with the CD8α chain (CD8a). CD8 is an antigen co-receptor on T cells that interacts with MHC class I on antigen-presenting cells. CD8 participates in T cell activation through its association with the T cell receptor complex and protein tyrosine kinase LCK (p56 ^{lck}).

Product Details

Verified Reactivity	Human
Antibody Type	Monoclonal
Immunogen	Human CD8α/CD8β-transfected cells
Formulation	Phosphate-buffered solution, pH 7.2, containing 0.09% sodium azide and BSA (origin USA)
Preparation	The antibody was purified by affinity chromatography and conjugated with PerCP/Fire™ 780 under optimal conditions.
Concentration	Lot-specific (to obtain lot-specific concentration and expiration, please enter the lot number in our Certificate of Analysis online tool.)
Storage & Handling	The antibody solution should be stored undiluted between 2°C and 8°C, and protected from prolonged exposure to light. Do not freeze.
Application	FC - Quality tested
Recommended Usage	Each lot of this antibody is quality control tested by immunofluorescent staining with flow cytometric analysis . For flow cytometric staining, the suggested use of this reagent is 5 μL per million cells in 100 μL staining volume or 5 μL per 100 μL of whole blood. It is recommended that the reagent be titrated for optimal performance for each application. * PerCP/Fire™ 780 has a maximum excitation of 478 nm and a maximum emission of 780 nm.
Excitation Laser	Blue Laser (488 nm)
Application Notes	Clone S21011A does not interfere with the binding of CD8α binding antibodies (SK1, HIT8a, RPA-T8). Clone S21011A shows comparable staining signals on 4% paraformaldehyde-fixed cells and unfixed cells. Based on in-house testing, clone S21011A clone reacts with an epitope that is exclusively present on human CD8b, whereas clone QA20A40 reacts with an epitope formed by a heterodimer of human CD8a and CD8b chains.
RRID	AB_3699040 (BioLegend Cat. No. 387317) AB_3699040 (BioLegend Cat. No. 387318)

Antigen Details

Structure	Ig superfamily
Distribution	Subset of T Cells, most thymocytes
Function	TCR co-receptor
Interaction	CD8 α
Ligand/Receptor	MHC Class 1 molecules
Cell Type	Lymphocytes, T cells, Thymocytes
Biology Area	Adaptive Immunity, Cancer Biomarkers, Cell Biology, Immunology
Molecular Family	CD Molecules, TCRs
Antigen References	<ol style="list-style-type: none"> 1. Johnson P. 1987. <i>Immunogenetics</i>. 26:174-7. 2. Norment AM & Littman DR, 1988. <i>EMBO J</i>. 7:3433-9.
Gene ID	926

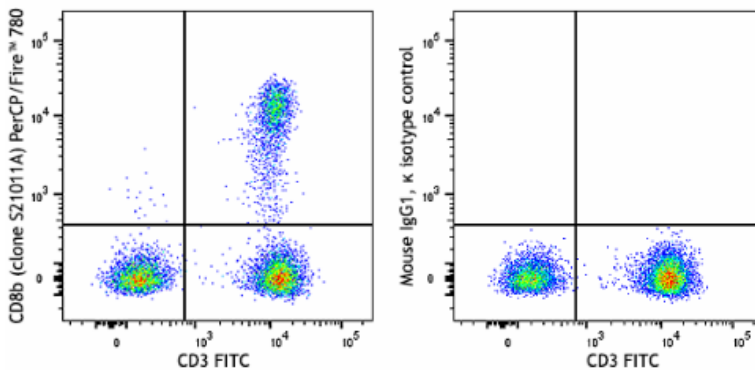
Related Protocols

- [Cell Surface Flow Cytometry Staining Protocol](#)

Other Formats

Purified anti-human CD8b, FITC anti-human CD8b, APC anti-human CD8b, PE anti-human CD8b, PerCP/Cyanine5.5 anti-human CD8b, Brilliant Violet 421™ anti-human CD8b, Brilliant Violet 605™ anti-human CD8b, PerCP/Fire™ 780 anti-human CD8b Antibody, APC/Cyanine7 anti-human CD8b Antibody

Product Data



Human peripheral blood lymphocytes were stained with anti-human CD3 (clone UCHT1) FITC and anti-human CD8b (clone S21011A) PerCP/Fire™ 780 (left) or mouse IgG1, κ PerCP/Fire™ 780 isotype control (right).

For Research Use Only. Not for diagnostic or therapeutic use.

This product is supplied subject to the terms and conditions, including the limited license, located at www.biolegend.com/terms ("Terms") and may be used only as provided in the Terms. Without limiting the foregoing, BioLegend products may not be used for any Commercial Purpose as defined in the Terms, resold in any form, used in manufacturing, or reverse engineered, sequenced, or otherwise studied or used to learn its design or composition without express written approval of BioLegend. Regardless of the information given in this document, user is solely responsible for determining any license requirements necessary for user's intended use and assumes all risk and liability arising from use of the product. BioLegend is not responsible for patent infringement or any other risks or liabilities whatsoever resulting from the use of its products.

BioLegend, the BioLegend logo, and all other trademarks are property of BioLegend, Inc. or their respective owners, and all rights are reserved.

8999 BioLegend Way, San Diego, CA 92121 www.biolegend.com
Toll-Free Phone: 1-877-Bio-Legend (246-5343) Phone: (858) 768-5800 Fax: (877) 455-9587