

## PerCP/Fire™ 780 anti-human XCR1 Antibody

<b>Catalog# / Size</b>	372637 / 25 tests 372638 / 100 tests
<b>Clone</b>	S15046E
<b>Regulatory Status</b>	RUO
<b>Other Names</b>	GPR5, CCXCR1, mXCR1, Lymphotactin receptor, SCM1 receptor, XC chemokine receptor 1
<b>Isotype</b>	Rat IgG2a, κ
<b>Description</b>	XCR1, also known as GPR5 or CCXCR1, is a 38 kD G-protein coupled, seven transmembrane receptor. It is the only member of the "C" chemokine receptor family and mediates chemotaxis of XCL1 and XCL2 (lymphotactin-1 and -2). XCR1 is expressed on a subset of CD141 <sup>+</sup> conventional dendritic cells. XCR1 is also involved in the migration and proliferation of some cancer cells.

### Product Details

---

<b>Verified Reactivity</b>	Human
<b>Antibody Type</b>	Monoclonal
<b>Host Species</b>	Rat
<b>Immunogen</b>	Human XCR1-transfected cells.
<b>Formulation</b>	Phosphate-buffered solution, pH 7.2, containing 0.09% sodium azide and BSA (origin USA)
<b>Preparation</b>	The antibody was purified by affinity chromatography and conjugated with PerCP/Fire™ 780 under optimal conditions.
<b>Concentration</b>	Lot-specific (to obtain lot-specific concentration and expiration, please enter the lot number in our <a href="#">Certificate of Analysis</a> online tool.)
<b>Storage &amp; Handling</b>	The antibody solution should be stored undiluted between 2°C and 8°C, and protected from prolonged exposure to light. <b>Do not freeze.</b>
<b>Application</b>	<a href="#">FC - Quality tested</a>
<b>Recommended Usage</b>	Each lot of this antibody is quality control tested by <a href="#">immunofluorescent staining with flow cytometric analysis</a> . For flow cytometric staining, the suggested use of this reagent is 5 µL per million cells in 100 µL staining volume or 5 µL per 100 µL of whole blood. It is recommended that the reagent be titrated for optimal performance for each application.  * PerCP/Fire™ 780 has a maximum excitation of 478 nm and a maximum emission of 780 nm.
<b>Excitation Laser</b>	Blue Laser (488 nm)

### Antigen Details

---

<b>Structure</b>	Only member of the "C" chemokine receptor family, seven transmembrane receptor, coupled to G protein, 38 kD.
<b>Distribution</b>	Subset of CD141 <sup>+</sup> conventional dendritic cells.
<b>Function</b>	Mediates chemotaxis to XCL1.
<b>Ligand/Receptor</b>	XCL1 and XCL2.
<b>Cell Type</b>	Dendritic cells

<b>Biology Area</b>	Immunology
<b>Molecular Family</b>	Cytokine/Chemokine Receptors, GPCR
<b>Antigen References</b>	<ol style="list-style-type: none"> <li>1. Carpentier S, <i>et al.</i> 2016. <i>J. Immunol. Methods</i> 432:35.</li> <li>2. Hartung E, <i>et al.</i> 2015. <i>J. Immunol.</i> 194:1069.</li> <li>3. Wang T, <i>et al.</i> 2015. <i>Biochem. Biophys. Res. Commun.</i> 464:635.</li> <li>4. Crozat K, <i>et al.</i> 2011. <i>J. Immunol.</i> 187:4411.</li> </ol>
<b>Gene ID</b>	<a href="#">2829</a>

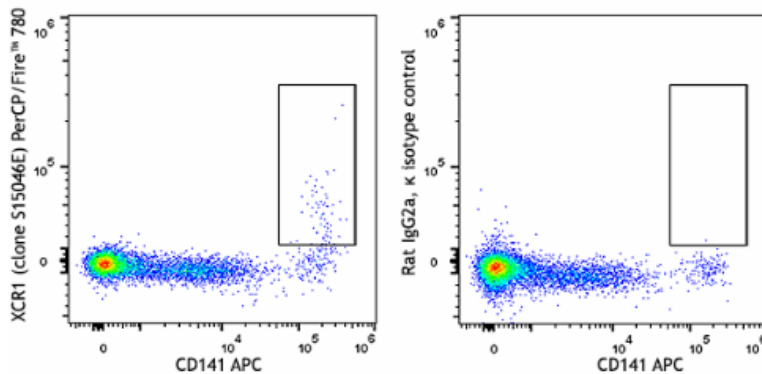
## Related Protocols

- [Cell Surface Flow Cytometry Staining Protocol](#)

## Other Formats

PE anti-human XCR1, Brilliant Violet 421™ anti-human XCR1, APC anti-human XCR1, APC/Fire™ 750 anti-human XCR1, FITC anti-human XCR1, TotalSeq™-A0208 anti-human XCR1, TotalSeq™-B0208 anti-human XCR1, TotalSeq™-C0208 anti-human XCR1, APC/Cyanine7 anti-human XCR1, PE/Dazzle™ 594 anti-human XCR1, KIRAVIA Blue 520™ anti-human XCR1, PE/Cyanine7 anti-human XCR1, PE/Fire™ 810 anti-human XCR1, PerCP/Cyanine5.5 anti-human XCR1, Alexa Fluor® 647 anti-human XCR1, Brilliant Violet 711™ anti-human XCR1, Spark Blue™ 550 anti-human XCR1 (Flexi-Fluor™), Spark Blue™ 574 anti-human XCR1 (Flexi-Fluor™) Antibody, Spark Red™ 718 anti-human XCR1 (Flexi-Fluor™), PerCP/Fire™ 806 anti-human XCR1 Antibody, PerCP/Fire™ 780 anti-human XCR1 Antibody

## Product Data



Human peripheral blood mononuclear were stained with a lineage cocktail of anti-human CD3/CD19/CD14/CD20/CD56 FITC, anti-human CD141 (clone M80) APC and anti-human XCR1 (clone S15046E) PerCP/Fire™ 780 (left) or rat IgG2a, κ PerCP/Fire™ 780 isotype control (right). Data shown was gated on the lineage negative lymphocytes and monocytes; the gate in the dot plot denotes XCR1+ cells.

For Research Use Only. Not for diagnostic or therapeutic use.

This product is supplied subject to the terms and conditions, including the limited license, located at [www.biolegend.com/terms](http://www.biolegend.com/terms) ("Terms") and may be used only as provided in the Terms. Without limiting the foregoing, BioLegend products may not be used for any Commercial Purpose as defined in the Terms, resold in any form, used in manufacturing, or reverse engineered, sequenced, or otherwise studied or used to learn its design or composition without express written approval of BioLegend. Regardless of the information given in this document, user is solely responsible for determining any license requirements necessary for user's intended use and assumes all risk and liability arising from use of the product. BioLegend is not responsible for patent infringement or any other risks or liabilities whatsoever resulting from the use of its products.

BioLegend, the BioLegend logo, and all other trademarks are property of BioLegend, Inc. or their respective owners, and all rights are reserved.

8999 BioLegend Way, San Diego, CA 92121 [www.biolegend.com](http://www.biolegend.com)  
Toll-Free Phone: 1-877-Bio-Legend (246-5343) Phone: (858) 768-5800 Fax: (877) 455-9587