

PerCP/Fire™ 806 anti-mouse Ly-6A/E (Sca-1) Antibody

Catalog# / Size	108157 / 25 µg 108158 / 100 µg
Clone	D7
Regulatory Status	RUO
Other Names	Sca-1
Isotype	Rat IgG2a, κ
Description	Ly-6A/E, also known as Sca-1, is an 18 kD member of the Ly-6 multigene family. Ly6A/E is a glycosylphosphatidylinositol (GPI)-linked protein expressed on hematopoietic stem cells. In mice expressing the Ly-6.2 haplotype (e.g., AKR, C57BL, C57BR, DBA/2, SJL, SWR, and 129), Ly-6A/E is also expressed on peripheral B lymphocytes and thymic and peripheral T lymphocytes. Strains expressing the Ly-6.1 haplotype (e.g., BALB/c, CBA, C3H/He, DBA/1, and NZB) have low Ly-6A/E expression on resting peripheral lymphocytes. The expression of Ly-6A/E on lymphocytes is upregulated upon activation from both Ly6.1 and Ly6.2 haplotype mice. Ly-6A/E is thought to be involved in the regulation of both T and B cell responses.

Product Details

Verified Reactivity	Mouse
Antibody Type	Monoclonal
Host Species	Rat
Immunogen	IL-2-dependent mouse T-cell line (CTL-L)
Formulation	Phosphate-buffered solution, pH 7.2, containing 0.09% sodium azide
Preparation	The antibody was purified by affinity chromatography and conjugated with PerCP/Fire™ 806 under optimal conditions.
Concentration	0.2 mg/mL
Storage & Handling	The antibody solution should be stored undiluted between 2°C and 8°C, and protected from prolonged exposure to light. Do not freeze.
Application	FC - Quality tested
Recommended Usage	Each lot of this antibody is quality control tested by immunofluorescent staining with flow cytometric analysis . For flow cytometric staining, the suggested use of this reagent is ≤ 0.125 µg per million cells in 100 µL volume. It is recommended that the reagent be titrated for optimal performance for each application. * PerCP/Fire™ 806 has a maximum excitation of 478 nm and a maximum emission of 806 nm.
Excitation Laser	Blue Laser (488 nm)
Application Notes	The D7 antibody has been reported to induce T cell activation and inhibit TCR-induced IL-2 production. Additional reported applications (for the relevant formats) include: Western blotting ^{1,2} , immunoprecipitation ¹ , <i>in vitro</i> lymphocyte activation ³⁻⁶ , induction of redirected lysis ⁷ , induction of T cell inhibitory signalling ⁸ , immunofluorescence ⁹ , and immunohistochemical staining of acetone-fixed frozen sections ¹³ and Bouin-fixed, paraffin-embedded samples ⁹ . The two Sca-1 recognizing clones D7 and E13-161.7 have been shown to bind distinct epitopes due to the inability of D7 to block the binding of E13-161.7. ¹⁴

Application References

(PubMed link indicates
BioLegend citation)

1. Ortega G, *et al.* 1986. *J. Immunol.* 137:3240. (WB, IP)
2. Palfree RGE, *et al.* 1986. *Immunogenetics* 23:197. (WB)
3. Codias EK, *et al.* 1990. *J. Immunol.* 144:2197.
4. Malek TR, *et al.* 1986. *J. Exp. Med.* 164:709.
5. Codias EK, *et al.* 1990. *J. Immunol.* 145:1407.
6. Ivanov V, *et al.* 1994. *J. Immunol.* 153:2394.
7. Karlhofer FM, *et al.* 1991. *J. Immunol.* 146:3662.
8. Fleming T, *et al.* 1994. *J. Immunol.* 153:1955.
9. van Bragt MPA, *et al.* 2005. *Biol. Reprod.* 73:634. (IF, IHC)
10. Umland O, *et al.* 2007. *J. Immunol.* 178:4147.
11. Cridland SO, *et al.* 2009. *Blood Cell. Mol. Dis.* 45:149. (FC) [PubMed](#)
12. Pronk CJ, *et al.* 2011. *J. Exp Med.* [PubMed](#)

[See More](#)

RRID

AB_3683136 (BioLegend Cat. No. 108157)
AB_3683136 (BioLegend Cat. No. 108158)

Antigen Details

Structure	Ly-6 multigene family, 18 kD
Distribution	Hematopoietic stem cells, activated T cells and B cells, subset of resting B cells and T cells
Function	Regulates B and T cell responses
Cell Type	B cells, Hematopoietic stem and progenitors, Mesenchymal Stem Cells, T cells
Biology Area	Immunology, Stem Cells
Antigen References	<ol style="list-style-type: none">1. Rock KL, <i>et al.</i> 1989. <i>Immunol. Rev.</i> 111:195.2. Morrison SJ, <i>et al.</i> 1994. <i>Immunity</i> 1:661.3. Spangrude GJ, <i>et al.</i> 1988. <i>J. Immunol.</i> 141:3697.4. Malek T, <i>et al.</i> 1986. <i>J. Exp. Med.</i> 164:709.
Gene ID	110454

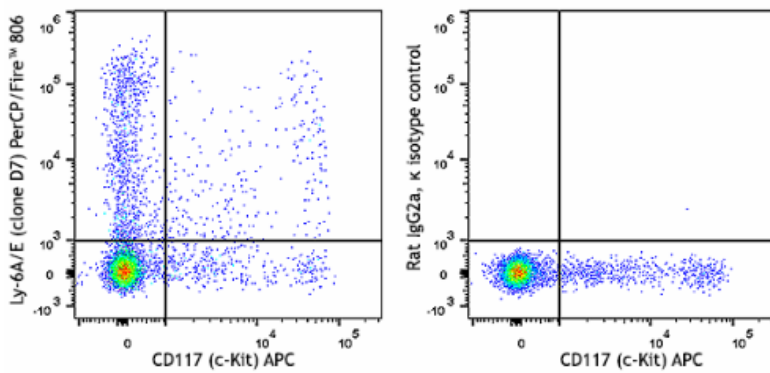
Related Protocols

- [Cell Surface Flow Cytometry Staining Protocol](#)

Other Formats

APC anti-mouse Ly-6A/E (Sca-1), Biotin anti-mouse Ly-6A/E (Sca-1), FITC anti-mouse Ly-6A/E (Sca-1), PE anti-mouse Ly-6A/E (Sca-1), PE/Cyanine5 anti-mouse Ly-6A/E (Sca-1), Purified anti-mouse Ly-6A/E (Sca-1), PE/Cyanine7 anti-mouse Ly-6A/E (Sca-1), Alexa Fluor® 488 anti-mouse Ly-6A/E (Sca-1), Alexa Fluor® 647 anti-mouse Ly-6A/E (Sca-1), Pacific Blue™ anti-mouse Ly-6A/E (Sca-1), Brilliant Violet 421™ anti-mouse Ly-6A/E (Sca-1), PerCP anti-mouse Ly-6A/E (Sca-1), PerCP/Cyanine5.5 anti-mouse Ly-6A/E (Sca-1), APC/Cyanine7 anti-mouse Ly-6A/E (Sca-1), Brilliant Violet 510™ anti-mouse Ly-6A/E (Sca-1), Brilliant Violet 711™ anti-mouse Ly-6A/E (Sca-1), Brilliant Violet 605™ anti-mouse Ly-6A/E (Sca-1), Purified anti-mouse Ly-6A/E (Sca-1) (Maxpar® Ready), PE/Dazzle™ 594 anti-mouse Ly-6A/E (Sca-1), Brilliant Violet 785™ anti-mouse Ly-6A/E (Sca-1), Alexa Fluor® 700 anti-mouse Ly-6A/E (Sca-1), Brilliant Violet 650™ anti-mouse Ly-6A/E (Sca-1), APC/Fire™ 750 anti-mouse Ly-6A/E (Sca-1), TotalSeq™-A0130 anti-mouse Ly-6A/E (Sca-1), TotalSeq™-B0130 anti-mouse Ly-6A/E (Sca-1), TotalSeq™-C0130 anti-mouse Ly-6A/E (Sca-1), Spark NIR™ 685 anti-mouse Ly-6A/E (Sca-1), Spark PLUS UV395™ anti-mouse Ly-6A/E (Sca-1), PerCP/Fire™ 806 anti-mouse Ly-6A/E (Sca-1) Antibody, Brilliant Violet 750™ anti-mouse Ly-6A/E (Sca-1)

Product Data



C57BL/6 mouse bone marrow cells were stained with anti-mouse Lineage Cocktail FITC, anti-mouse CD117 (c-Kit) (clone 2B8) APC, and anti-mouse Ly-6A/E (Sca-1) (clone D7) PerCP/Fire™ 806 (left) or rat IgG2a, κ PerCP/Fire™ 806 isotype control (right). Cells are gated on the lineage-negative population.

For Research Use Only. Not for diagnostic or therapeutic use.

This product is supplied subject to the terms and conditions, including the limited license, located at www.biolegend.com/terms ("Terms") and may be used only as provided in the Terms. Without limiting the foregoing, BioLegend products may not be used for any Commercial Purpose as defined in the Terms, resold in any form, used in manufacturing, or reverse engineered, sequenced, or otherwise studied or used to learn its design or composition without express written approval of BioLegend. Regardless of the information given in this document, user is solely responsible for determining any license requirements necessary for user's intended use and assumes all risk and liability arising from use of the product. BioLegend is not responsible for patent infringement or any other risks or liabilities whatsoever resulting from the use of its products.

BioLegend, the BioLegend logo, and all other trademarks are property of BioLegend, Inc. or their respective owners, and all rights are reserved.

8999 BioLegend Way, San Diego, CA 92121 www.biolegend.com
 Toll-Free Phone: 1-877-Bio-Legend (246-5343) Phone: (858) 768-5800 Fax: (877) 455-9587