

## PerCP/Fire™ 806 anti-mouse Ly-6c Antibody

<b>Catalog# / Size</b>	128067 / 25 µg 128068 / 100 µg
<b>Clone</b>	HK1.4
<b>Regulatory Status</b>	RUO
<b>Other Names</b>	Lymphocyte antigen 6 complex, locus C
<b>Isotype</b>	Rat IgG2c, κ
<b>Description</b>	Most hematopoietic cells express one or more members of Ly-6 family. The expression of Ly-6 varies with development stage and activation. Ly-6C is a 14-17 kD GPI-linked surface protein expressed on mouse monocyte/macrophage cells, endothelial cells, neutrophils, and some T cell subsets. Ly-6C is reported to be an indicator of memory CD8 <sup>+</sup> T cells.

### Product Details

---

<b>Verified Reactivity</b>	Mouse
<b>Antibody Type</b>	Monoclonal
<b>Host Species</b>	Rat
<b>Immunogen</b>	L3 cloned CTL cells
<b>Formulation</b>	Phosphate-buffered solution, pH 7.2, containing 0.09% sodium azide
<b>Preparation</b>	The antibody was purified by affinity chromatography and conjugated with PerCP/Fire™ 806 under optimal conditions.
<b>Concentration</b>	0.2 mg/mL
<b>Storage &amp; Handling</b>	The antibody solution should be stored undiluted between 2°C and 8°C, and protected from prolonged exposure to light. <b>Do not freeze.</b>
<b>Application</b>	<a href="#">FC - Quality tested</a>
<b>Recommended Usage</b>	Each lot of this antibody is quality control tested by <a href="#">immunofluorescent staining with flow cytometric analysis</a> . For flow cytometric staining, the suggested use of this reagent is ≤ 0.25 µg per million cells in 100 µL volume. It is recommended that the reagent be titrated for optimal performance for each application.
<b>Excitation Laser</b>	Blue Laser (488 nm)
<b>Application Notes</b>	Clone HK1.4 does not block the binding of clone RB6-8C5 <sup>8</sup> .  Additional reported applications (for relevant formats of this clone) include: <i>in vitro</i> activation of T cells <sup>1-3</sup> and immunohistochemistry of frozen sections <sup>4</sup> .
<b>Application References</b>	<ol style="list-style-type: none"><li>1. Jutila MA, <i>et al.</i> 1988. <i>Eur. J. Immunol.</i> 18:1819. (Activ)</li><li>2. Herold KC, <i>et al.</i> 1990. <i>Diabetes</i> 39:815. (Activ)</li><li>3. Havran WL, <i>et al.</i> 1988. <i>J. Immunol.</i> 140:1034 (Activ)</li><li>4. Flanagan K, <i>et al.</i> 2008. <i>J. Immunol.</i> 180:3874. (IHC)</li><li>5. Makaroff LE, <i>et al.</i> 2009. <i>P. Natl. Acad. Sci. USA</i> 106:4799. (FC)</li><li>6. Zuber J, <i>et al.</i> 2009. <i>Genes Dev.</i> 23:877. (FC) <a href="#">PubMed</a></li><li>7. Ribechini E, <i>et al.</i> 2009. <i>Eur. J. Immunol.</i> 39:3538.</li><li>8. Ma C, <i>et al.</i> 2012. <i>J. Leukoc. Biol.</i> 92:1199.</li><li>9. Watson NB, <i>et al.</i> 2015. <i>J Immunol.</i> 194:2796. <a href="#">PubMed</a></li></ol>
<b>(PubMed link indicates BioLegend citation)</b>	
<b>RRID</b>	AB_3698908 (BioLegend Cat. No. 128067) AB_3698908 (BioLegend Cat. No. 128068)

## Antigen Details

<b>Structure</b>	14-17 kD protein (134 amino acids), member of the Ly-6 family of GPI linked protein. Ly6 family members share structure homology throughout a distinctive cysteine rich protein domain that incorporates O-linked carbohydrates.
<b>Distribution</b>	Ly-6C is expressed primarily on bone marrow myeloid populations, monocytes/macrophages, neutrophils, endothelial cells, and some T cell subsets. Ly-6C is also a marker of memory CD8 <sup>+</sup> T cells.
<b>Cell Type</b>	Endothelial cells, Macrophages, Monocytes, Neutrophils, T cells
<b>Biology Area</b>	Immunology
<b>Molecular Family</b>	CD Molecules
<b>Antigen References</b>	1. Jutila MA, <i>et al.</i> 1988. <i>Eur. J. Immunol.</i> 18:1819. 2. Cerwenka A, <i>et al.</i> 1998. <i>J. Immunol.</i> 161:97.
<b>Gene ID</b>	<a href="#">17067</a>

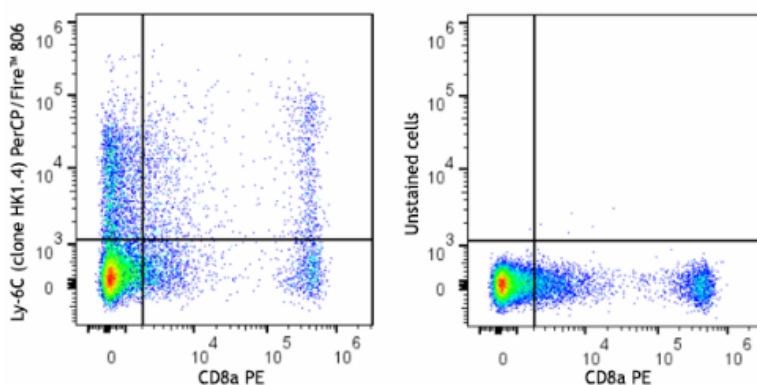
## Related Protocols

- [Cell Surface Flow Cytometry Staining Protocol](#)

## Other Formats

Pacific Blue™ anti-mouse Ly-6C, APC anti-mouse Ly-6C, Purified anti-mouse Ly-6C, Biotin anti-mouse Ly-6C, FITC anti-mouse Ly-6C, Alexa Fluor® 647 anti-mouse Ly-6C, PE anti-mouse Ly-6C, PerCP/Cyanine5.5 anti-mouse Ly-6C, PE/Cyanine7 anti-mouse Ly-6C, Alexa Fluor® 488 anti-mouse Ly-6C, Alexa Fluor® 700 anti-mouse Ly-6C, APC/Cyanine7 anti-mouse Ly-6C, PerCP anti-mouse Ly-6C, Brilliant Violet 570™ anti-mouse Ly-6C, Brilliant Violet 421™ anti-mouse Ly-6C, Brilliant Violet 510™ anti-mouse Ly-6C, Brilliant Violet 605™ anti-mouse Ly-6C, Brilliant Violet 711™ anti-mouse Ly-6C, Purified anti-mouse Ly-6C (Maxpar® Ready), Brilliant Violet 785™ anti-mouse Ly-6C, PE/Dazzle™ 594 anti-mouse Ly-6C, APC/Fire™ 750 anti-mouse Ly-6C, TotalSeq™-A0013 anti-mouse Ly-6C, Brilliant Violet 650™ anti-mouse Ly-6C, TotalSeq™-C0013 anti-mouse Ly-6C, TotalSeq™-B0013 anti-mouse Ly-6C, APC/Fire™ 810 anti-mouse Ly-6C Antibody, Spark Red™ 718 anti-mouse Ly-6C, Spark UV™ 387 anti-mouse Ly-6C, PE/Fire™ 810 anti-mouse Ly-6C, Spark Blue™ 550 anti-mouse Ly-6C (Flexi-Fluor™), Spark Blue™ 574 anti-mouse Ly-6C (Flexi-Fluor™), PE/Cyanine5 anti-mouse Ly-6C, Spark PLUS B550™ anti-mouse Ly-6C, PerCP/Fire™ 806 anti-mouse Ly-6c Antibody, Spark YG™ 581 anti-mouse Ly-6C (Flexi-Fluor™), Spark YG™ 593 anti-mouse Ly-6C (Flexi-Fluor™) Antibody, Spark NIR™ 685 anti-mouse Ly-6C (Flexi-Fluor™) Antibody

## Product Data



C57BL/6 mouse splenocytes were stained with anti-mouse CD8a (clone 53-6.7) PE and anti-mouse Ly-6C (clone HK1.4) PerCP/Fire™ 806 (left) or stained with anti-mouse CD8a (clone 53-6.7) PE only (right).

For Research Use Only. Not for diagnostic or therapeutic use.

This product is supplied subject to the terms and conditions, including the limited license, located at [www.biolegend.com/terms](http://www.biolegend.com/terms) ("Terms") and may be used only as provided in the Terms. Without limiting the foregoing, BioLegend products may not be used for any Commercial Purpose as defined in the Terms, resold in any form, used in manufacturing, or reverse engineered, sequenced, or otherwise studied or used to learn its design or composition without express written approval of BioLegend. Regardless of the information given in this document, user is solely responsible for determining any license requirements necessary for user's intended

use and assumes all risk and liability arising from use of the product. BioLegend is not responsible for patent infringement or any other risks or liabilities whatsoever resulting from the use of its products.

BioLegend, the BioLegend logo, and all other trademarks are property of BioLegend, Inc. or their respective owners, and all rights are reserved.

8999 BioLegend Way, San Diego, CA 92121 [www.biolegend.com](http://www.biolegend.com)  
Toll-Free Phone: 1-877-Bio-Legend (246-5343) Phone: (858) 768-5800 Fax: (877) 455-9587