

Spark PLUS UV395™ anti-human HLA-A,B,C Antibody

Catalog# / Size	311463 / 25 tests 311464 / 100 tests
Clone	W6/32
Regulatory Status	RUO
Other Names	Major Histocompatibility Class I, MHC class I
Isotype	Mouse IgG2a, κ
Description	MHC class I antigens associated with β 2-microglobulin are expressed by all human nucleated cells. MHC class I molecules are involved in presentation of antigens to CD8 ⁺ T cells. They play an important role in cell-mediated immune responses and tumor surveillance.

Product Details

Verified Reactivity	Human, Cynomolgus, Rhesus
Reported Reactivity	African Green, Baboon, Cat, Cow, Chimpanzee
Antibody Type	Monoclonal
Host Species	Mouse
Formulation	Phosphate-buffered solution, pH 7.2, containing 0.09% sodium azide and BSA (origin USA)
Preparation	The antibody was purified by affinity chromatography and conjugated with Spark PLUS UV395™ under optimal conditions.
Concentration	Lot-specific (to obtain lot-specific concentration and expiration, please enter the lot number in our Certificate of Analysis online tool.)
Storage & Handling	The antibody solution should be stored undiluted between 2°C and 8°C, and protected from prolonged exposure to light. Do not freeze.
Application	FC - Quality tested
Recommended Usage	Each lot of this antibody is quality control tested by immunofluorescent staining with flow cytometric analysis . For flow cytometric staining, the suggested use of this reagent is 5 μ L per million cells in 100 μ L staining volume or 5 μ L per 100 μ L of whole blood. It is recommended that the reagent be titrated for optimal performance for each application. * Spark PLUS UV395™ has a maximum excitation of 355 nm and a maximum emission of 385 nm.
Excitation Laser	Ultraviolet Laser (355 nm)
Application Notes	Clone W6/32 recognizes residues in the N terminus of the human β 2-microglobulin molecule ²¹ . Additional reported applications (for the relevant formats) include: immunoprecipitation ² , Western blotting (non-reducing) ³ , immunohistochemical staining of acetone-fixed frozen tissue sections ^{4,5} , blocking ^{6,7} , inhibition of NK cell-mediated lysis ¹⁰ , and activation ^{8,9} . Clone W6/32 has been reported not to be suitable for immunohistochemistry on paraffin sections ¹⁷ . The LEAF™ purified antibody (Endotoxin < 0.1 EU/ μ g, Azide-Free, 0.2 μ m filtered) is recommended for functional assays. For highly sensitive assays, we recommend Ultra-LEAF™ purified antibody (Cat. No. 311428) with a lower endotoxin limit than standard LEAF™ purified antibodies (Endotoxin < 0.01 EU/ μ g).

Application References

(PubMed link indicates
BioLegend citation)

1. Darrow TL, *et al.* 1989. *J. Immunol.* 142:3329.
2. Stern P, *et al.* 1987. *J. Immunol.* 138:1088.
3. Tran TM, *et al.* 2001. *Immunogenetics* 53:440.
4. Barbatis C, *et al.* 1981. *Gut* 22:985.
5. Ayyoub M, *et al.* 2004. *Cancer Immunity* 4:7.
6. DeFelice M, *et al.* 1990. *Cell. Immunol.* 126:420.
7. Fayen J, *et al.* 1998. *Int. Immunol.* 10:1347.
8. Turco MC, *et al.* 1988. *J. Immunol.* 141:2275.
9. Geppert TD, *et al.* 1989. *J. Immunol.* 142:3763.
10. Wooden SL, *et al.* 2005. *J. Immunol.* 175:1383.
11. Nagano M, *et al.* 2007. *Blood* 110:151.
12. McLoughlin RM, *et al.* 2008. *J. Immunol.* 181:1323. [PubMed](#)

[See More](#)

RRID

AB_3683324 (BioLegend Cat. No. 311463)
AB_3683324 (BioLegend Cat. No. 311464)

Antigen Details

Structure	Ig superfamily
Distribution	All nucleated cells
Function	Antigen presentation
Ligand/Receptor	CD3/TCR, CD8
Biology Area	Immunology, Innate Immunity
Molecular Family	MHC Antigens
Antigen References	1. Barclay AN, <i>et al.</i> Eds. 1993. The Leukocyte Antigen FactsBook. Academic Press Inc. San Diego.
Gene ID	3105

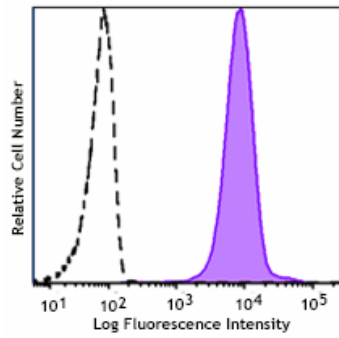
Related Protocols

- [Cell Surface Flow Cytometry Staining Protocol](#)

Other Formats

APC anti-human HLA-A,B,C, FITC anti-human HLA-A,B,C, PE anti-human HLA-A,B,C, PE/Cyanine5 anti-human HLA-A,B,C, Purified anti-human HLA-A,B,C, Alexa Fluor® 488 anti-human HLA-A,B,C, Alexa Fluor® 647 anti-human HLA-A,B,C, Pacific Blue™ anti-human HLA-A,B,C, PerCP anti-human HLA-A,B,C, APC/Cyanine7 anti-human HLA-A,B,C, PerCP/Cyanine5.5 anti-human HLA-A,B,C, Ultra-LEAF™ Purified anti-human HLA-A,B,C, PE/Cyanine7 anti-human HLA-A,B,C, Brilliant Violet 510™ anti-human HLA-A,B,C, Alexa Fluor® 700 anti-human HLA-A,B,C, PE/Dazzle™ 594 anti-human HLA-A,B,C, Biotin anti-human HLA-A,B,C, Brilliant Violet 605™ anti-human HLA-A,B,C, APC/Fire™ 750 anti-human HLA-A,B,C, TotalSeq™-A0058 anti-human HLA-A,B,C, TotalSeq™-C0058 anti-human HLA-A,B,C, TotalSeq™-B0058 anti-human HLA-A,B,C, Spark NIR™ 685 anti-human HLA-A,B,C, TotalSeq™-D0058 anti-human HLA-A,B,C, Cell-Vive™ GMP Ultra-LEAF™ Purified anti-human HLA-A,B,C SF, Cell-Vive™ GMP Ultra-LEAF™ Biotin anti-human HLA-A,B,C SF, Spark UV™ 387 anti-human HLA-A,B,C, Spark Red™ 718 anti-human HLA-A,B,C (Flexi-Fluor™), Spark Blue™ 574 anti-human HLA-A,B,C (Flexi-Fluor™), Spark Blue™ 550 anti-human HLA-A,B,C (Flexi-Fluor™), Spark PLUS UV395™ anti-human HLA-A,B,C Antibody, Spark YG™ 581 anti-human HLA-A,B,C (Flexi-Fluor™), Spark YG™ 593 anti-human HLA-A,B,C (Flexi-Fluor™) Antibody

Product Data



Human peripheral blood lymphocytes were stained with anti-human HLA-A,B,C (clone W6/32) Spark PLUS UV395™ (filled histogram) or mouse IgG2a, κ Spark PLUS UV395™ isotype control (open histogram).

For Research Use Only. Not for diagnostic or therapeutic use.

This product is supplied subject to the terms and conditions, including the limited license, located at www.biolegend.com/terms ("Terms") and may be used only as provided in the Terms. Without limiting the foregoing, BioLegend products may not be used for any Commercial Purpose as defined in the Terms, resold in any form, used in manufacturing, or reverse engineered, sequenced, or otherwise studied or used to learn its design or composition without express written approval of BioLegend. Regardless of the information given in this document, user is solely responsible for determining any license requirements necessary for user's intended use and assumes all risk and liability arising from use of the product. BioLegend is not responsible for patent infringement or any other risks or liabilities whatsoever resulting from the use of its products.

BioLegend, the BioLegend logo, and all other trademarks are property of BioLegend, Inc. or their respective owners, and all rights are reserved.

8999 BioLegend Way, San Diego, CA 92121 www.biolegend.com
Toll-Free Phone: 1-877-Bio-Legend (246-5343) Phone: (858) 768-5800 Fax: (877) 455-9587